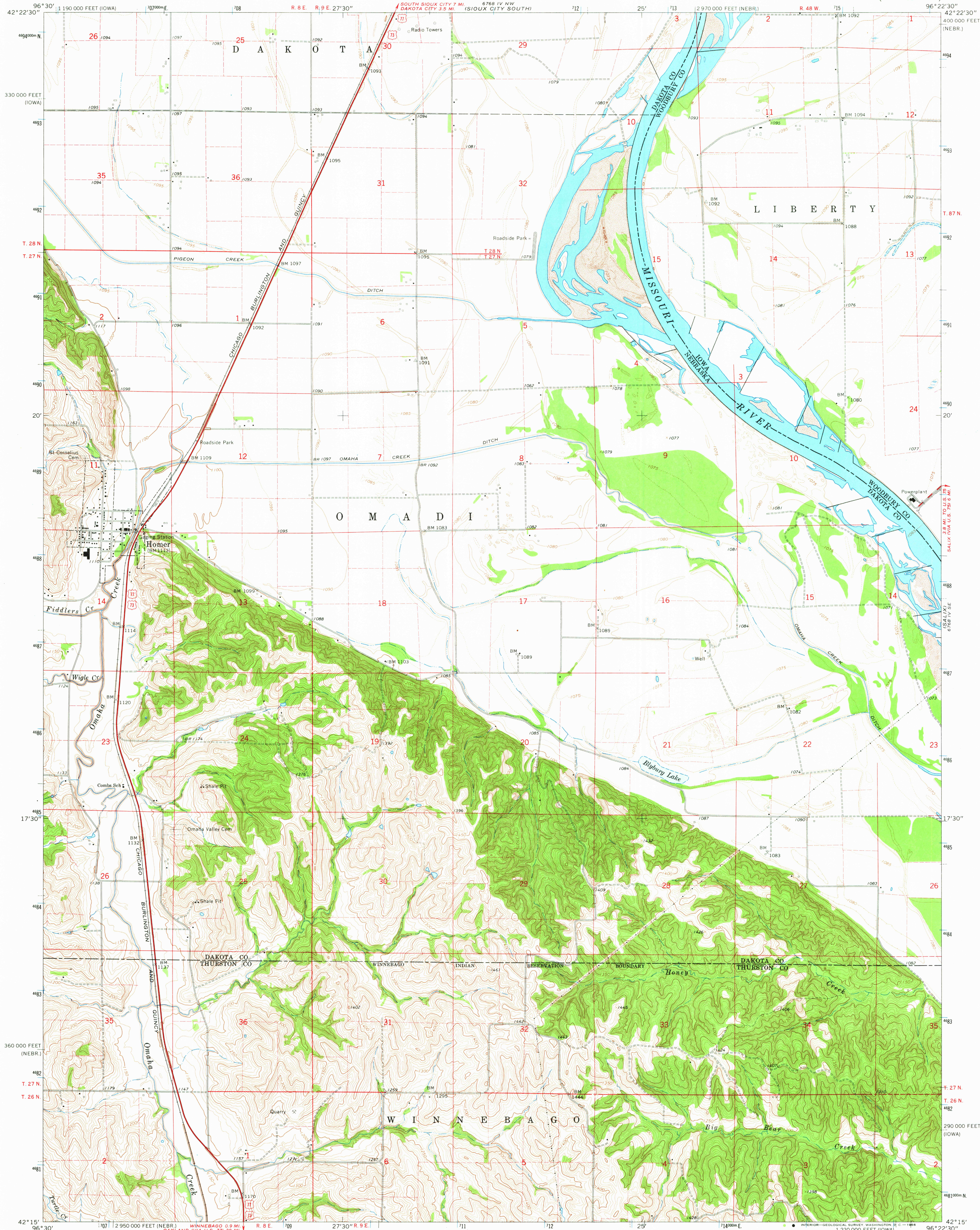


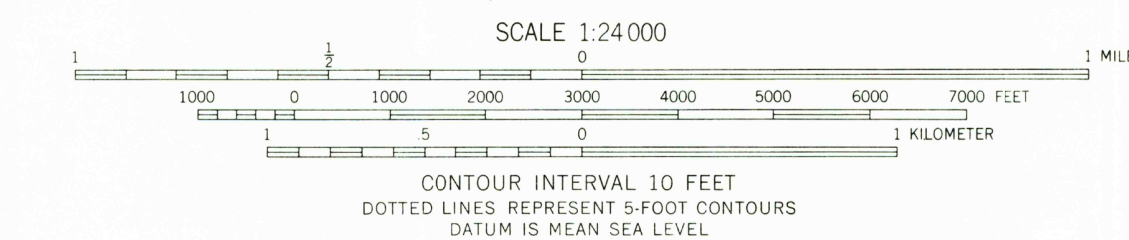
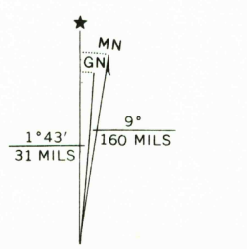
UNITED STATES
DEPARTMENT OF THE INTERIOR
GEOLOGICAL SURVEY

HOMER QUADRANGLE
NEBRASKA-IOWA
7.5 MINUTE SERIES (TOPOGRAPHIC)

6768 IV NE
(SERGEANT BLUFF)



Mapped, edited, and published by the Geological Survey
Control by USGS and USC&GS
Topography by photogrammetric methods from aerial
photographs taken 1962 and planimetric surveys 1964
Polyconic projection. 1927 North American datum
10,000-foot grid based on Nebraska coordinate system, north zone,
and Iowa coordinate system, north zone
1000-meter Universal Transverse Mercator grid ticks,
zone 14, shown in blue
Fine red dashed lines indicate selected fence and field lines where
generally visible on aerial photographs. This information is unchecked



ROAD CLASSIFICATION
Heavy-duty ——— Light-duty ———
Medium-duty ——— Unimproved dirt ———
U.S. Route

THIS MAP COMPLIES WITH NATIONAL MAP ACCURACY STANDARDS
FOR SALE BY U.S. GEOLOGICAL SURVEY, DENVER, COLORADO 80225 OR WASHINGTON, D.C. 20242
AND BY THE IOWA GEOLOGICAL SURVEY, IOWA CITY, IOWA
A FOLDER DESCRIBING TOPOGRAPHIC MAPS AND SYMBOLS IS AVAILABLE ON REQUEST



U.S.G.S.
FILE COPY
TOPOGRAPHIC DIVISION

HOMER, NEBR.-IOWA
N4215-W9622.5/7.5

1964
AMS 6768 IV SW-SERIES V875

USGS
Historical File
Topographic Division

2656
MAR 18 1968