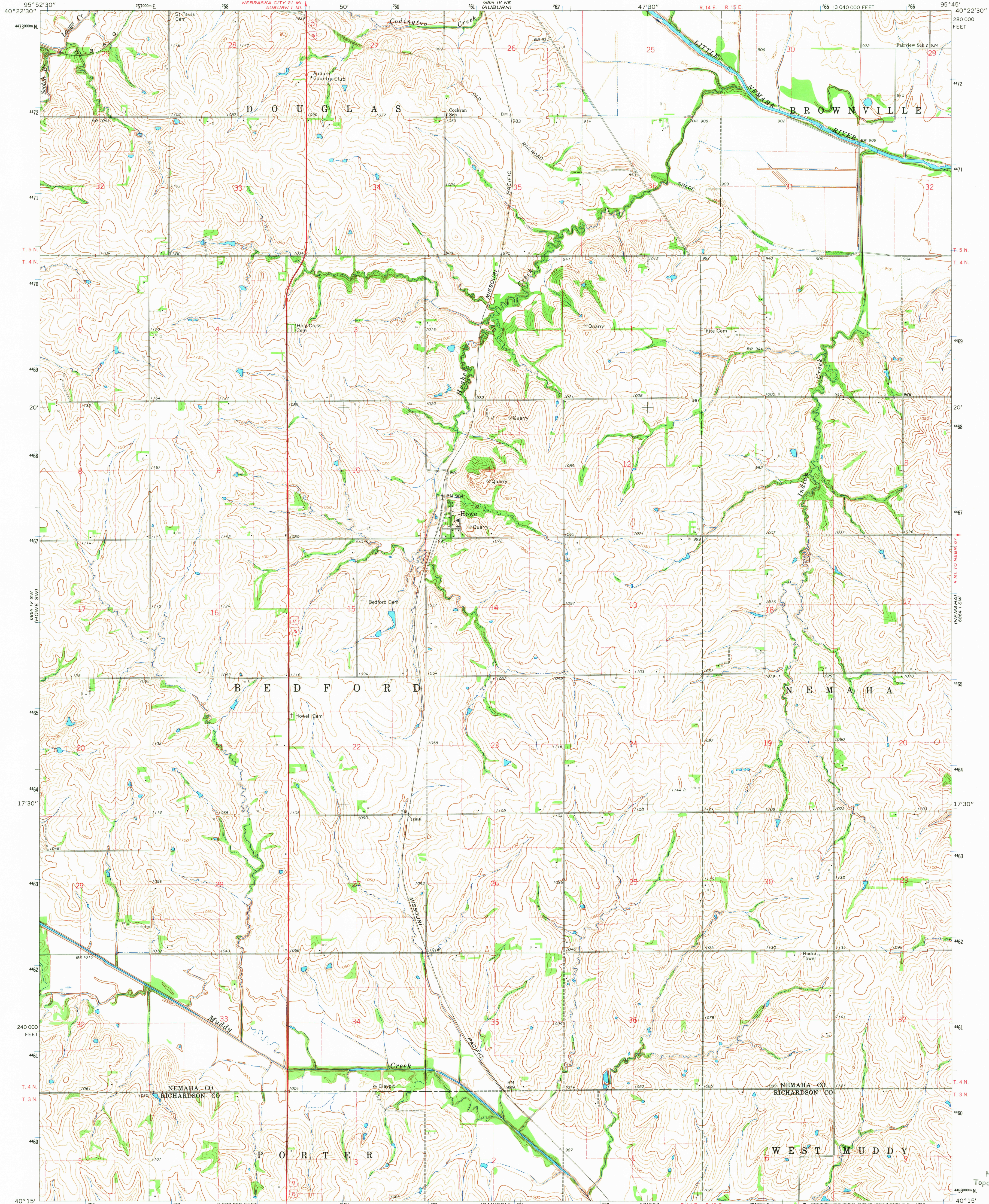


6884 IV NW  
(BROCK)

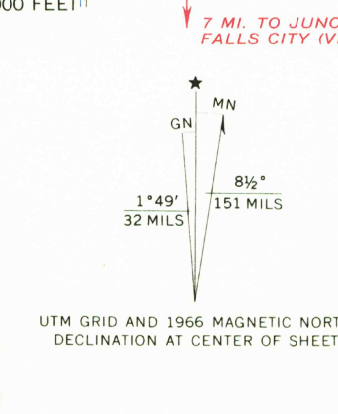
UNITED STATES  
DEPARTMENT OF THE INTERIOR  
GEOLOGICAL SURVEY

HOWE QUADRANGLE  
NEBRASKA  
7.5 MINUTE SERIES (TOPOGRAPHIC)  
SE/4 HOWE 15' QUADRANGLE

6884 IV NW  
(FERD)



Mapped, edited, and published by the Geological Survey as part of the Department of the Interior program for the development of the Missouri River Basin Control by USGS and USC&GS  
Topography by photogrammetric methods from aerial photographs taken 1965. Field checked 1966  
Polyconic projection. 1927 North American datum 10,000-foot grid based on Nebraska coordinate system, south zone 1000-meter Universal Transverse Mercator grid ticks, zone 15, shown in blue  
Fine red dashed lines indicate selected fence and field lines where generally visible on aerial photographs. This information is unchecked



SCALE 1:24,000  
CONTOUR INTERVAL 10 FEET  
DOTTED LINES REPRESENT 5-FOOT CONTOURS  
DATUM IS MEAN SEA LEVEL  
THIS MAP COMPLIES WITH NATIONAL MAP ACCURACY STANDARDS  
FOR SALE BY U.S. GEOLOGICAL SURVEY, DENVER, COLORADO 80225, OR WASHINGTON, D. C. 20242  
A FOLDER DESCRIBING TOPOGRAPHIC MAPS AND SYMBOLS IS AVAILABLE ON REQUEST

U.S.G.S.  
TOPOGRAPHIC DIVISION  
HOWE, NEBR.  
SE/4 HOWE 15' QUADRANGLE  
N4015—W9545/7.5  
1966  
AMS 6884 IV SE—SERIES V875

USGS  
Historical File  
Topographic Division  
2265  
APR 4 1968