

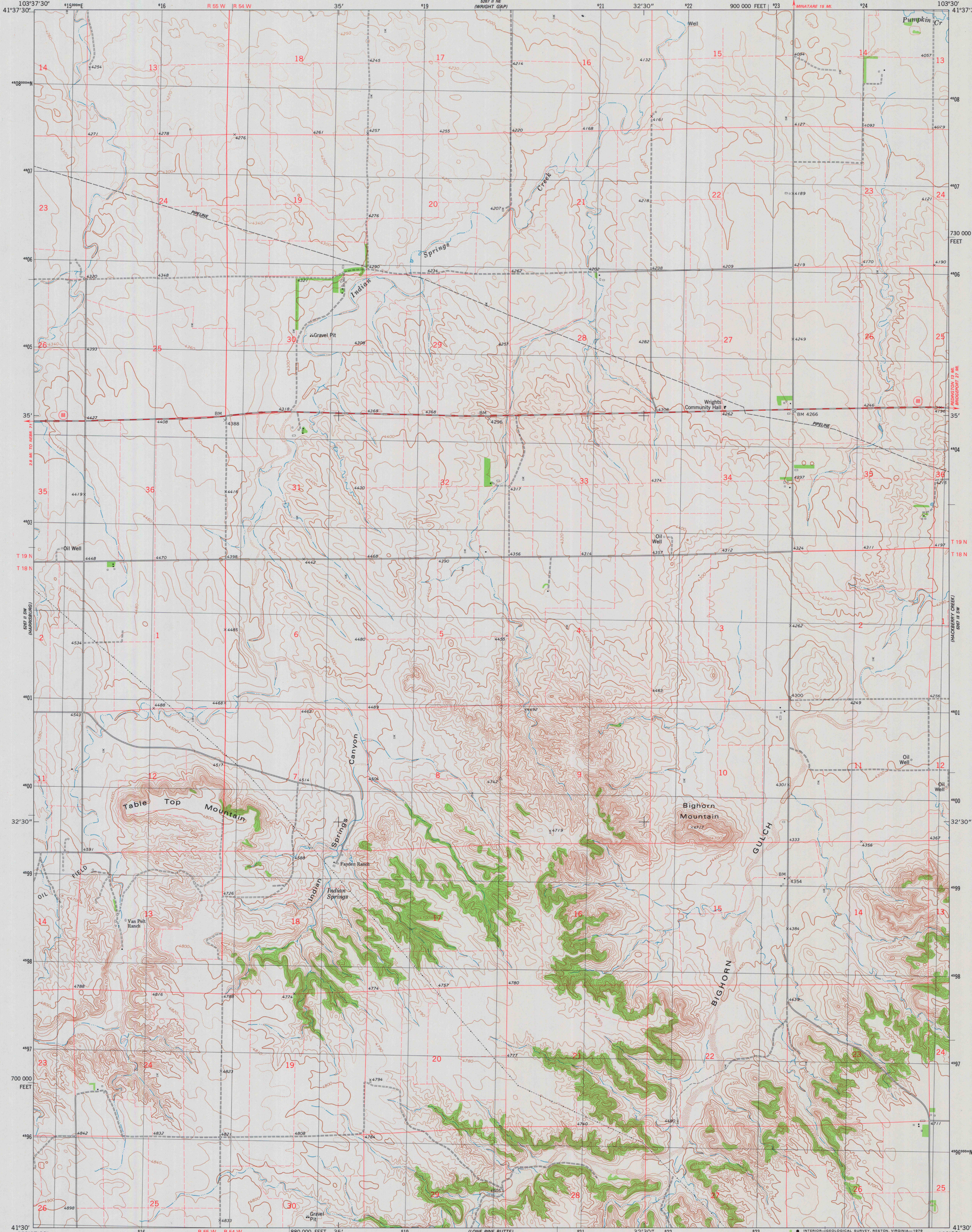
5267 II NW  
(WILSON MOUNTAIN)

UNITED STATES  
DEPARTMENT OF THE INTERIOR  
GEOLOGICAL SURVEY



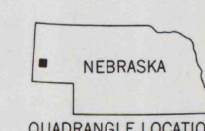
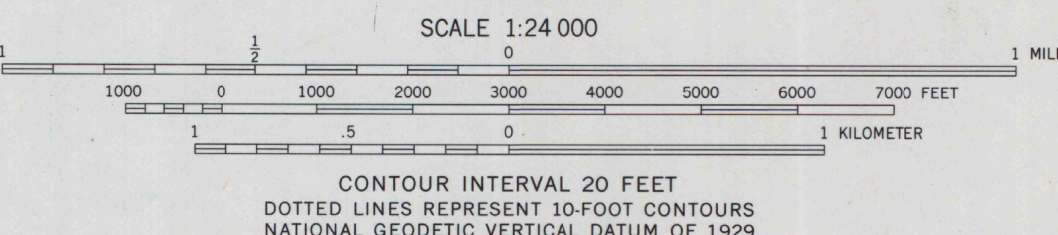
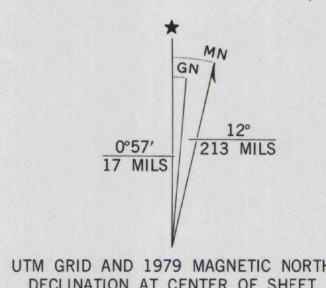
INDIAN SPRINGS QUADRANGLE  
NEBRASKA-BANNER CO.  
7.5 MINUTE SERIES (TOPOGRAPHIC)

5267 II NW  
(MC GREW)



Mapped, edited, and published by the Geological Survey

Control by USGS and NOS/NOAA  
Topography by photogrammetric methods from aerial photographs  
taken 1973. Field checked 1974. Map edited 1979  
Projection and 10,000-foot grid ticks: Nebraska coordinate  
system, south zone (Lambert conformal conic)  
1000-meter Universal Transverse Mercator grid, zone 13  
1927 North American datum  
Fine red dashed lines indicate selected fence and field lines where  
generally visible on aerial photographs. This information is unchecked



ROAD CLASSIFICATION	
Primary highway, hard surface	Light-duty road, hard or improved surface
Secondary highway, hard surface	Unimproved road
Interstate Route	U. S. Route
	State Route

INDIAN SPRINGS, NEBR.  
N4130-W10330/7.5

1979

AMS 5267 II SE-SERIES 9875

THIS MAP COMPLIES WITH NATIONAL MAP ACCURACY STANDARDS  
FOR SALE BY U. S. GEOLOGICAL SURVEY, DENVER, COLORADO 80225, OR RESTON, VIRGINIA 22092  
A FOLDER DESCRIBING TOPOGRAPHIC MAPS AND SYMBOLS IS AVAILABLE ON REQUEST

MAP AND AIR PHOTO  
LIBRARY  
DEC 10 1979  
University of Wisconsin  
Madison