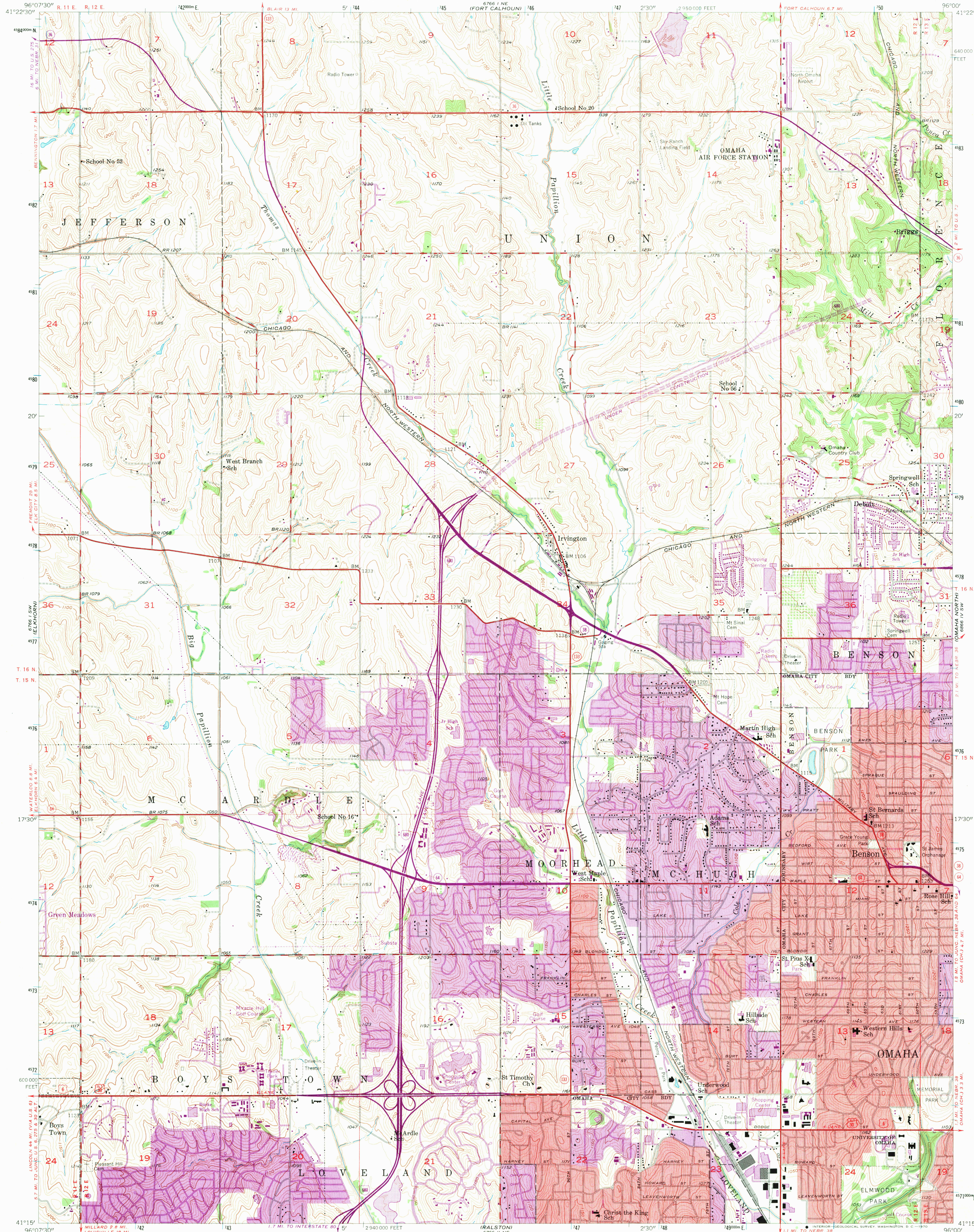


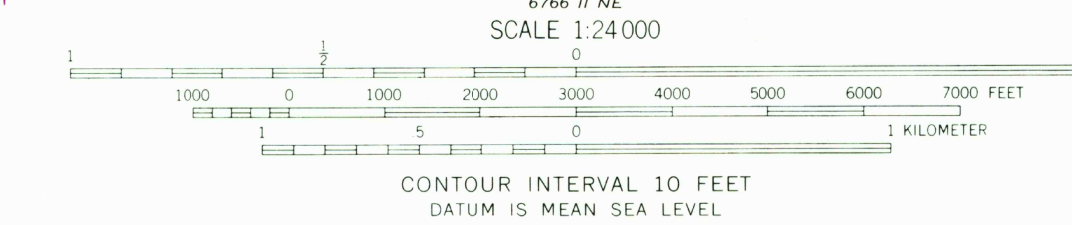
UNITED STATES
DEPARTMENT OF THE INTERIOR
GEOLOGICAL SURVEY

IRVINGTON QUADRANGLE
NEBRASKA—DOUGLAS CO.
7.5 MINUTE SERIES (TOPOGRAPHIC)



Mapped, edited, and published by the Geological Survey
Control by USGS and USC&GS
Topography from aerial photographs by photogrammetric methods
Aerial photographs taken 1955. Field check 1956
Polyconic projection. 1927 North American datum
10,000-foot grid based on Nebraska coordinate system, south zone
1000-meter Universal Transverse Mercator grid ticks,
zone 14, shown in blue
Red tint indicates areas in which only landmark buildings are shown
Revisions shown in purple compiled from aerial photographs
taken 1969. This information not field checked
Purple tint indicates extension of urban areas

UTM GRID AND 1969 MAGNETIC NORTH
DECLINATION AT CENTER OF SHEET



ROAD CLASSIFICATION
Heavy-duty ——— Light-duty ———
Medium-duty ——— Unimproved dirt ———
U.S. Route ——— State Route ———
Interstate Route ———

IRVINGTON, NEBR.
N4115—W9600/7.5

1956

PHOTOREVISED 1969
AMS 6766 1 SE—SERIES W875

THIS MAP COMPLIES WITH NATIONAL MAP ACCURACY STANDARDS
FOR SALE BY U.S. GEOLOGICAL SURVEY, DENVER, COLORADO 80225, OR WASHINGTON, D.C. 20242
A FOLDER DESCRIBING TOPOGRAPHIC MAPS AND SYMBOLS IS AVAILABLE ON REQUEST

U.S.G.S.
FILE COPY
TOPOGRAPHIC DIVISION

2965

APR 2 0 1970