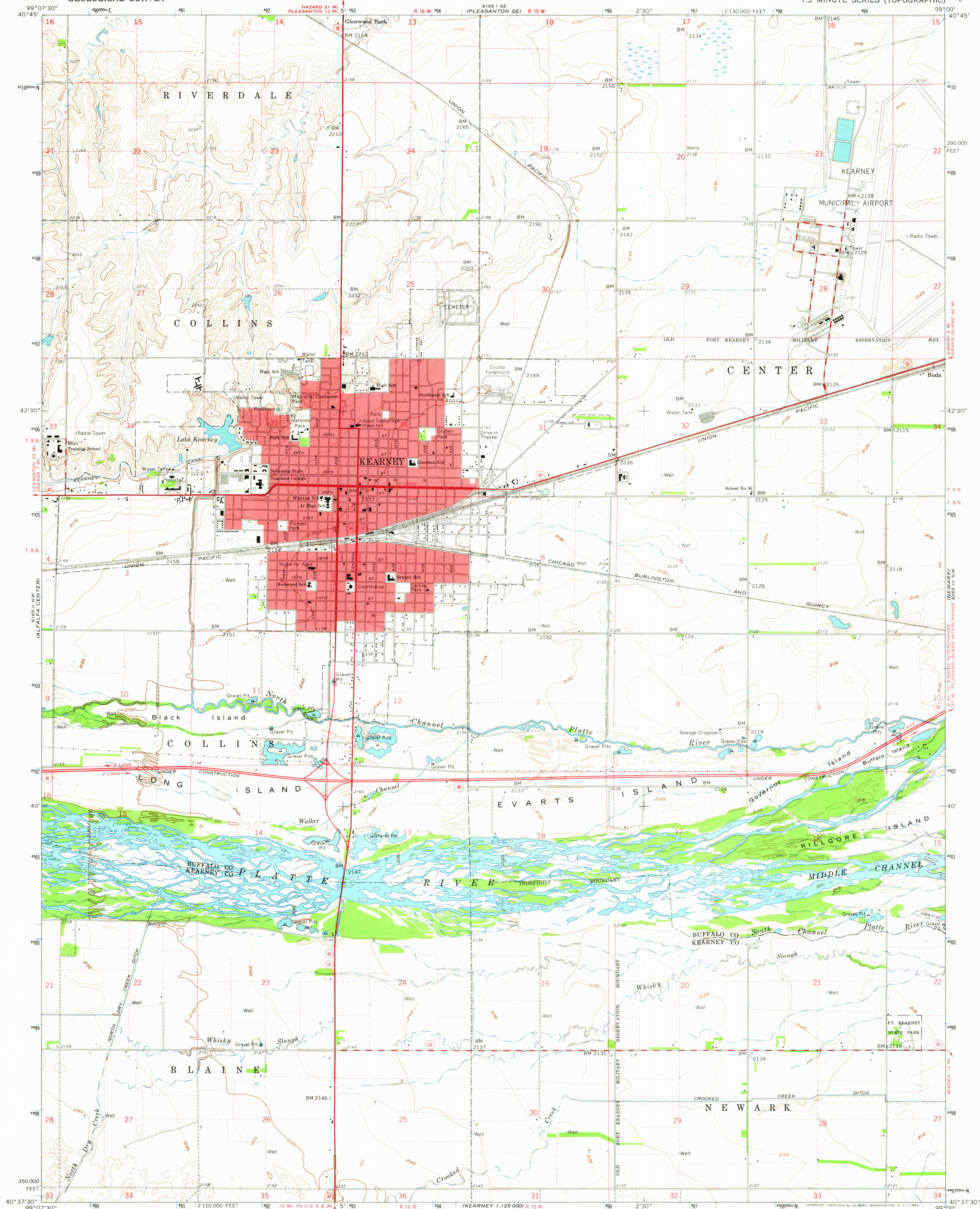
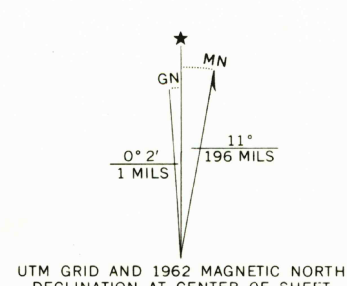


UNITED STATES
DEPARTMENT OF THE INTERIOR
GEOLOGICAL SURVEY

KEARNEY QUADRANGLE
NEBRASKA
7.5 MINUTE SERIES (TOPOGRAPHIC)

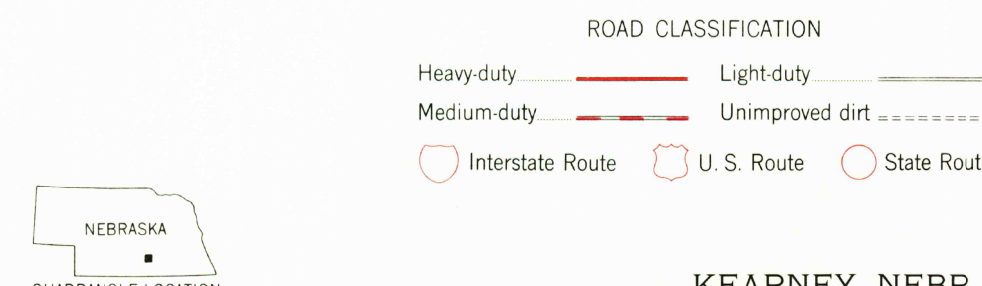


Mapped, edited, and published by the Geological Survey as part of the Department of the Interior program for the development of the Missouri River Basin. Control by USGS, USC&GS, and U.S. Bureau of Reclamation. Topography by photogrammetric methods from aerial photographs taken 1951 and planimetric surveys 1962. Polyconic projection. 1927 North American datum. 10,000-foot grid based on Nebraska coordinate system, south zone. 1000-meter Universal Transverse Mercator grid ticks, zone 14, shown in blue. Red tint indicates areas in which only landmark buildings are shown. Fine red dashed lines indicate selected fence and field lines where generally visible on aerial photographs. This information is unchecked.



CONTOUR INTERVAL 10 FEET
DOTTED LINES REPRESENT 5-FOOT CONTOURS
DATUM IS MEAN SEA LEVEL

THIS MAP COMPLIES WITH NATIONAL MAP ACCURACY STANDARDS
FOR SALE BY U. S. GEOLOGICAL SURVEY, DENVER 25, COLORADO OR WASHINGTON 25, D. C.
A FOLDER DESCRIBING TOPOGRAPHIC MAPS AND SYMBOLS IS AVAILABLE ON REQUEST



KEARNEY, NEBR.
N4037.5—W9900/7.5

1962

AMS 6165 II NE—SERIES V875

MAR 2 1964