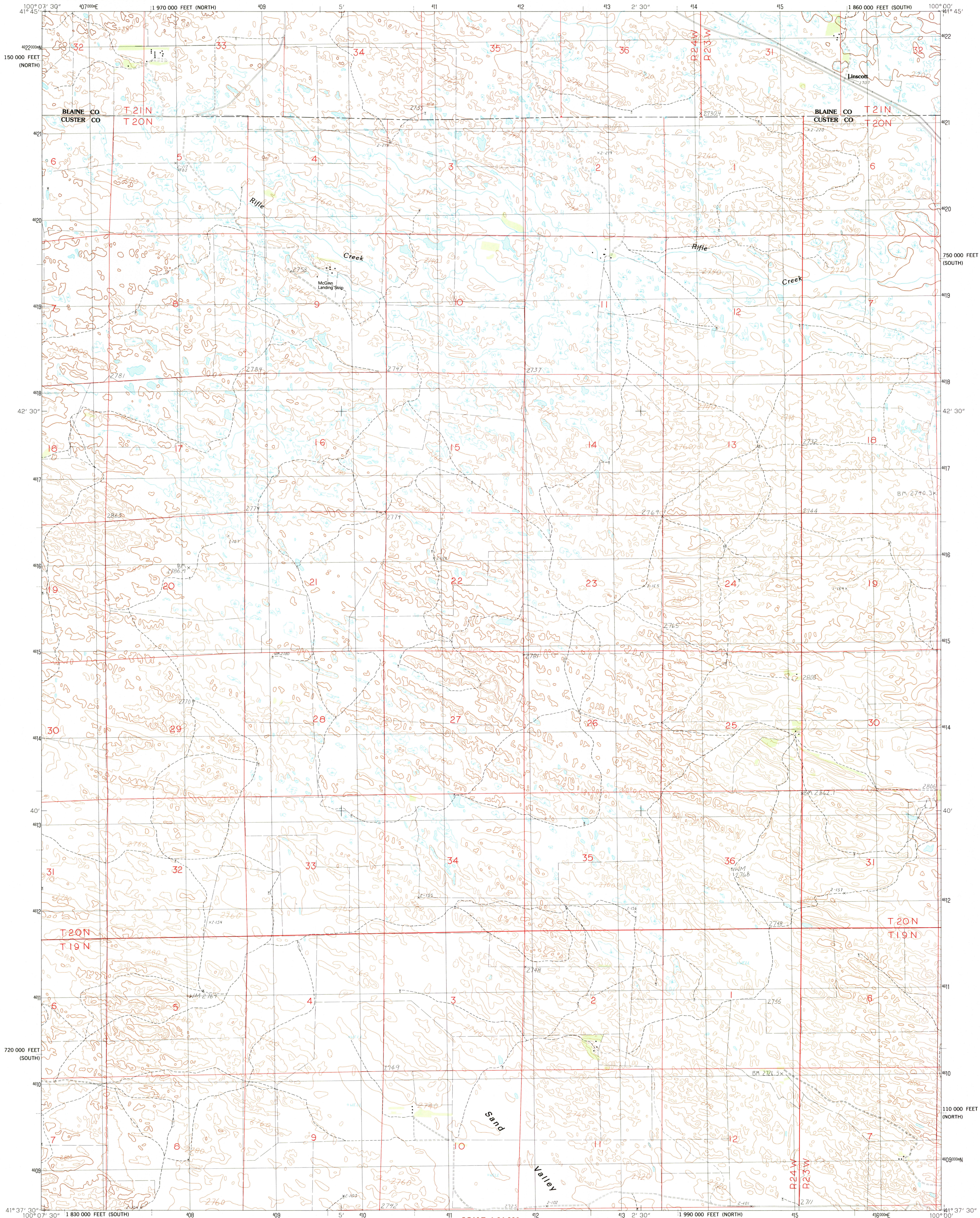


UNITED STATES
DEPARTMENT OF THE INTERIOR
GEOLOGICAL SURVEY

LINSCOTT QUADRANGLE
NEBRASKA
7.5 MINUTE SERIES (TOPOGRAPHIC)



PRODUCED BY THE UNITED STATES GEOLOGICAL SURVEY
CONTROL BY USGS AND NOS/NOAA
COMPILED FROM AERIAL PHOTOGRAPHS TAKEN 1985
FIELD CHECKED 1985. MAP EDITED
PROJECTION LAMBERT CONFORMAL CONIC
GRID: 1000-METER UNIVERSAL TRANSVERSE MERCATOR ZONE 14
100,000-FOOT STATE GRID TICS, NEBRASKA, SOUTH AND NORTH ZONES
UTM GRID DECLINATION 0°42' WEST
1986 MAGNETIC NORTH DECLINATION 9°30' EAST
VERTICAL DATUM NATIONAL GEODETIC VERTICAL DATUM OF 1929
HORIZONTAL DATUM 1983 NORTH AMERICAN DATUM
To place on the predicted North American Datum 1983,
move the projection lines as shown by dashed corner ticks
(5 meters north and 34 meters east)
There may be private inholdings within the boundaries of any
Federal and State reservations shown on this map
No distinction made between houses, barns, and other buildings

PROVISIONAL MAP
Produced from original
manuscript drawings. Infor-
mation shown as of date of
photography.

SCALE 1:24 000
INTERIOR—GEOLOGICAL SURVEY, RESTON, VIRGINIA—1987

1 000 0 1000 2000 3000 4000 5000 6000 7000 8000 9000 10 000
MILES
1 000 0 1000 2000 3000 4000 5000 6000 7000 8000 9000 10 000
FEET
1 000 0 1000 2000 3000 4000 5000 6000 7000 8000 9000 10 000
METERS

CONTOUR INTERVAL 20 FEET

CONTROL ELEVATIONS SHOWN TO THE NEAREST 0.1 FOOT
OTHER ELEVATIONS SHOWN TO THE NEAREST FOOT
To convert feet to meters multiply by .3048
To convert meters to feet multiply by 3.2808

THIS MAP COMPLIES WITH NATIONAL MAP ACCURACY STANDARDS
FOR SALE BY U.S. GEOLOGICAL SURVEY, DENVER, COLORADO 80225, OR RESTON, VIRGINIA 22092

ROAD LEGEND
Improved Road
Unimproved Road
Trail
Interstate Route U. S. Route State Route

NEBRASKA
QUADRANGLE LOCATION

1	2	3	1 Dunning SW
4	5	6	2 Dunning NW
7	8	9	3 Brewster SW
10	11	12	4 Linscott NW
13	14	15	5 Anselmo NW
16	17	18	6 Linscott SW
19	20	21	7 Linscott SE
22	23	24	8 Anselmo SW

ADJOINING 7.5 QUADRANGLE NAMES

LINSCOTT, NEBRASKA
PROVISIONAL EDITION 1986
41100-F1-TF-024

