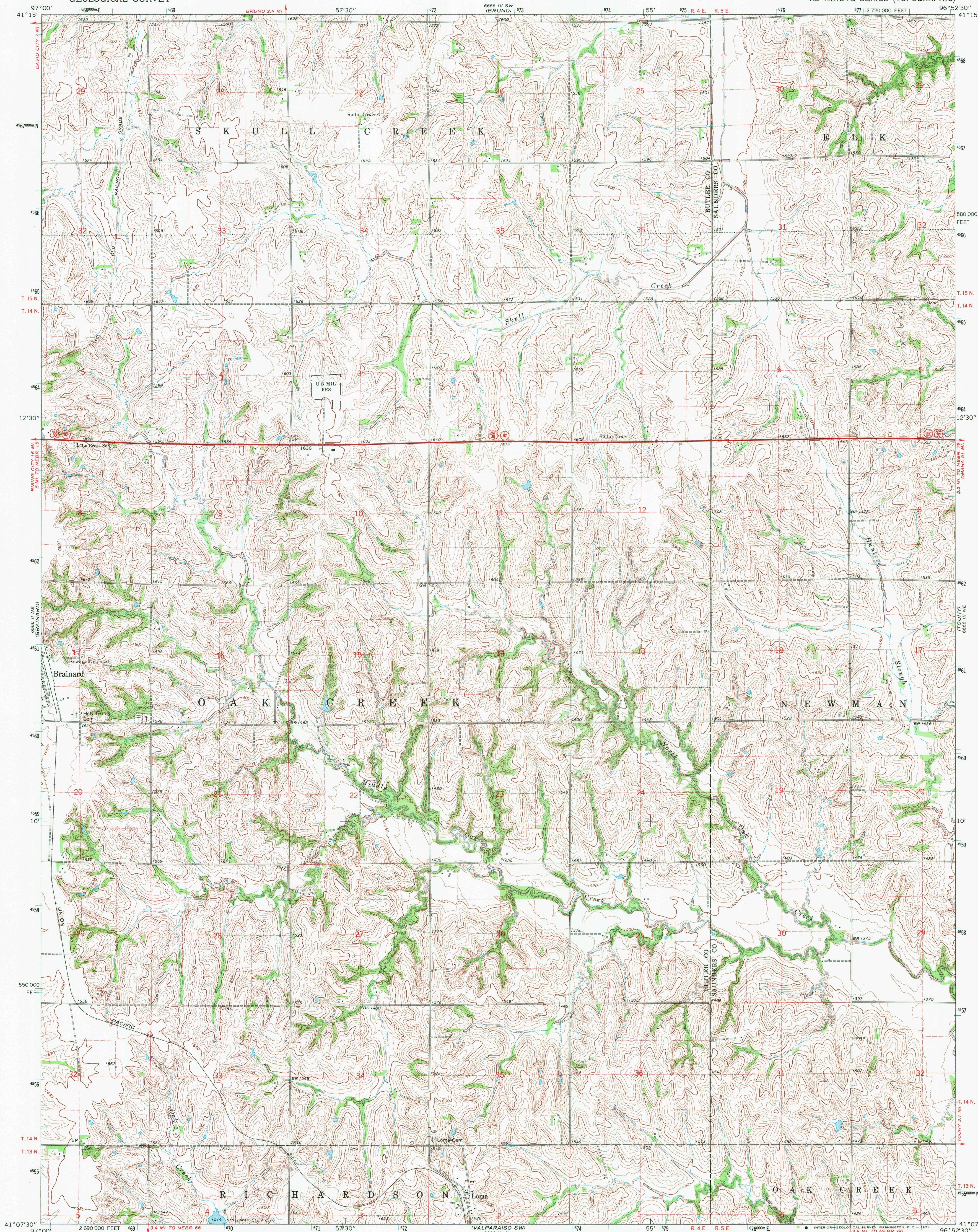


UNITED STATES
DEPARTMENT OF THE INTERIOR
GEOLOGICAL SURVEY

LOMA QUADRANGLE
NEBRASKA
7.5 MINUTE SERIES (TOPOGRAPHIC)



Mapped, edited, and published by the Geological Survey as part of the Department of the Interior program for the development of the Missouri River Basin.

Control by USGS and USC&GS

Topography by photogrammetric methods from aerial photographs taken 1968. Field checked 1969

Polycyclic projection. 1927 North American datum

10,000-foot grid based on Nebraska coordinate system, south zone

1000-meter Universal Transverse Mercator grid ticks, zone 14, shown in blue

Fine red dashed lines indicate selected fence and field lines where generally visible on aerial photographs. This information is unchecked

UTM GRID AND 1960 MAGNETIC NORTH DECLINATION AT CENTER OF SHEET

1°21' 24 MILS

9° 160 MILS

SCALE 1:24,000

1 1000 0 1000 2000 3000 4000 5000 6000 7000 FEET

1 KILOMETER

CONTOUR INTERVAL 10 FEET

DATUM IS MEAN SEA LEVEL



ROAD CLASSIFICATION

Primary highway, all weather, hard surface

Light-duty road, all weather, improved surface

Unimproved road, fair or dry weather

U. S. Route

State Route

U.S.G.S.
FILE COPY
TOPOGRAPHIC DIVISION

LOMA, NEBR.
N4107.5-W9652.5/7.5

1969

AMS 6666 III NW-SERIES V875

THIS MAP COMPLIES WITH NATIONAL MAP ACCURACY STANDARDS

FOR SALE BY U.S. GEOLOGICAL SURVEY, DENVER, COLORADO 80225, OR WASHINGTON, D. C. 20242

A FOLDER DESCRIBING TOPOGRAPHIC MAPS AND SYMBOLS IS AVAILABLE ON REQUEST

JUL 16 1971