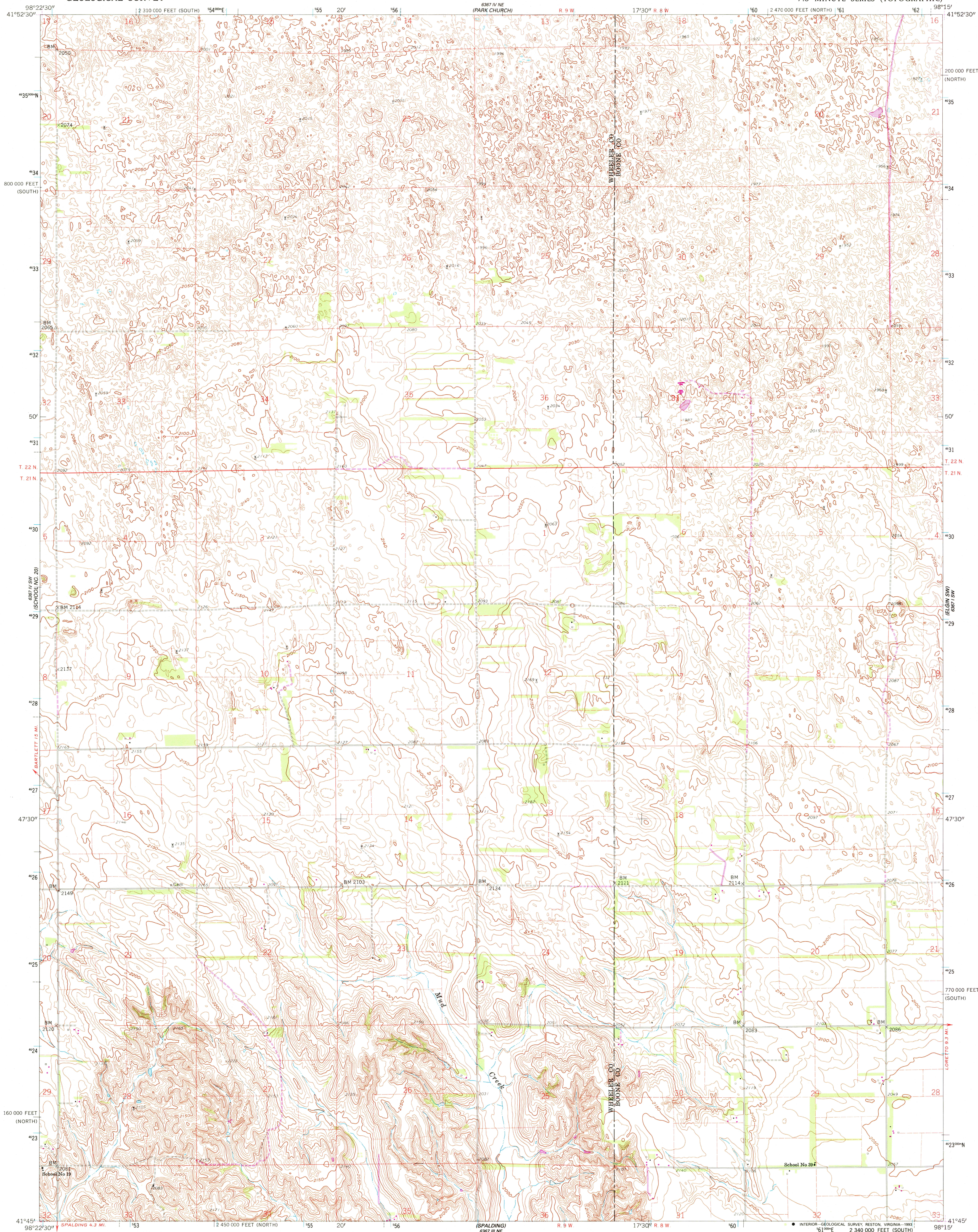


UNITED STATES
DEPARTMENT OF THE INTERIOR
GEOLOGICAL SURVEY

MUD CREEK QUADRANGLE
NEBRASKA
7.5 MINUTE SERIES (TOPOGRAPHIC)

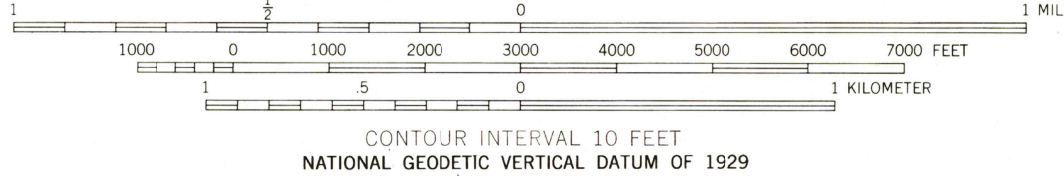
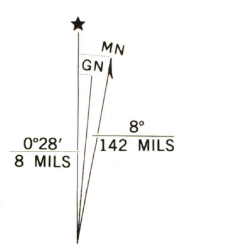


Mapped, edited, and published by the Geological Survey as part of the Department of the Interior program for the development of the Missouri River Basin Control by USGS and USC&GS

Topography by photogrammetric methods from aerial photographs taken 1958. Field checked 1960

Polyconic projection. 1927 North American datum 10,000-foot grids based on Nebraska coordinate system, north and south zones 1000-meter Universal Transverse Mercator grid ticks, zone 14, shown in blue To place on the predicted North American Datum 1983, move the projection lines 5 meters north and 30 meters east as shown by dashed corner ticks

Revisions shown in purple and woodland compiled from aerial photographs taken 1981 and other sources This information not field checked. Map edited 1985



ROAD CLASSIFICATION
Light-duty ———— Unimproved dirt ————

THIS MAP COMPLIES WITH NATIONAL MAP ACCURACY STANDARDS
FOR SALE BY U.S. GEOLOGICAL SURVEY, DENVER, COLORADO 80225, OR RESTON, VIRGINIA 22092
A FOLDER DESCRIBING TOPOGRAPHIC MAPS AND SYMBOLS IS AVAILABLE ON REQUEST

MUD CREEK, NEBR.
(FORMERLY SPALDING 2 SE)
41098-G3-TF-024

1960
PHOTOREVISED 1985
DMA 6367 IV SE - SERIES V875

