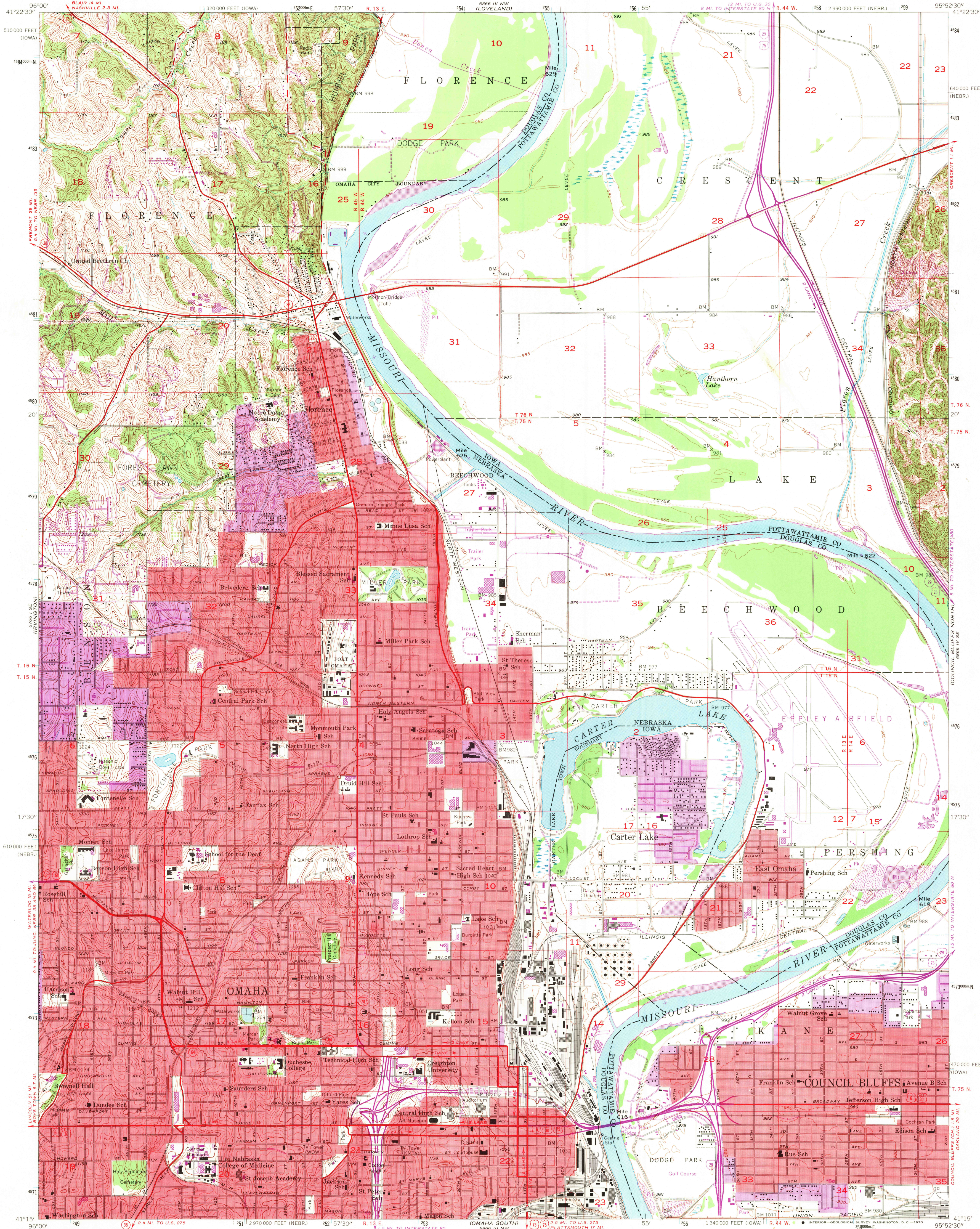
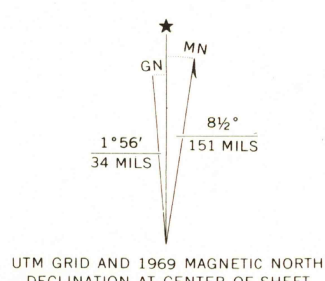


UNITED STATES
DEPARTMENT OF THE INTERIOR
GEOLOGICAL SURVEY

OMAHA NORTH QUADRANGLE
NEBRASKA—IOWA
7.5 MINUTE SERIES (TOPOGRAPHIC)



Mapped, edited, and published by the Geological Survey
Control by USGS and USC&GS
Topography from aerial photographs by Kersh plotter
and by planetable surveys 1956. Aerial photographs taken 1952
Polyconic projection. 1927 North American datum
10,000-foot grid based on Nebraska coordinate system,
south zone, and Iowa coordinate system, south zone
1000-meter Universal Transverse Mercator grid ticks,
zone 15, shown in blue
Red tint indicates areas in which only landmark buildings are shown
Revisions shown in purple compiled from aerial photographs
taken 1969. This information not field checked
Purple tint indicates extension of urban areas



THIS MAP COMPLIES WITH NATIONAL MAP ACCURACY STANDARDS
FOR SALE BY U.S. GEOLOGICAL SURVEY, DENVER, COLORADO 80225, OR WASHINGTON, D.C. 20242
AND BY THE IOWA GEOLOGICAL SURVEY, IOWA CITY, IOWA 52240
A FOLDER DESCRIBING TOPOGRAPHIC MAPS AND SYMBOLS IS AVAILABLE ON REQUEST



ROAD CLASSIFICATION

- Heavy-duty —————
- Medium-duty ————
- Unimproved dirt ————
- U. S. Route ————
- State Route ————
- Interstate Route ————
- Light-duty ————
- Unimproved dirt ————

OMAHA NORTH, NEBR.—IOWA
N4115—W9552.5/7.5

1956
PHOTOREVISED 1969
AMS 6866 IV SW—SERIES V875

MAY 8 1970
USGS
Historical File
Topographic Division

U.S.G.S.
FILE COPY
TOPOGRAPHIC DIVISION