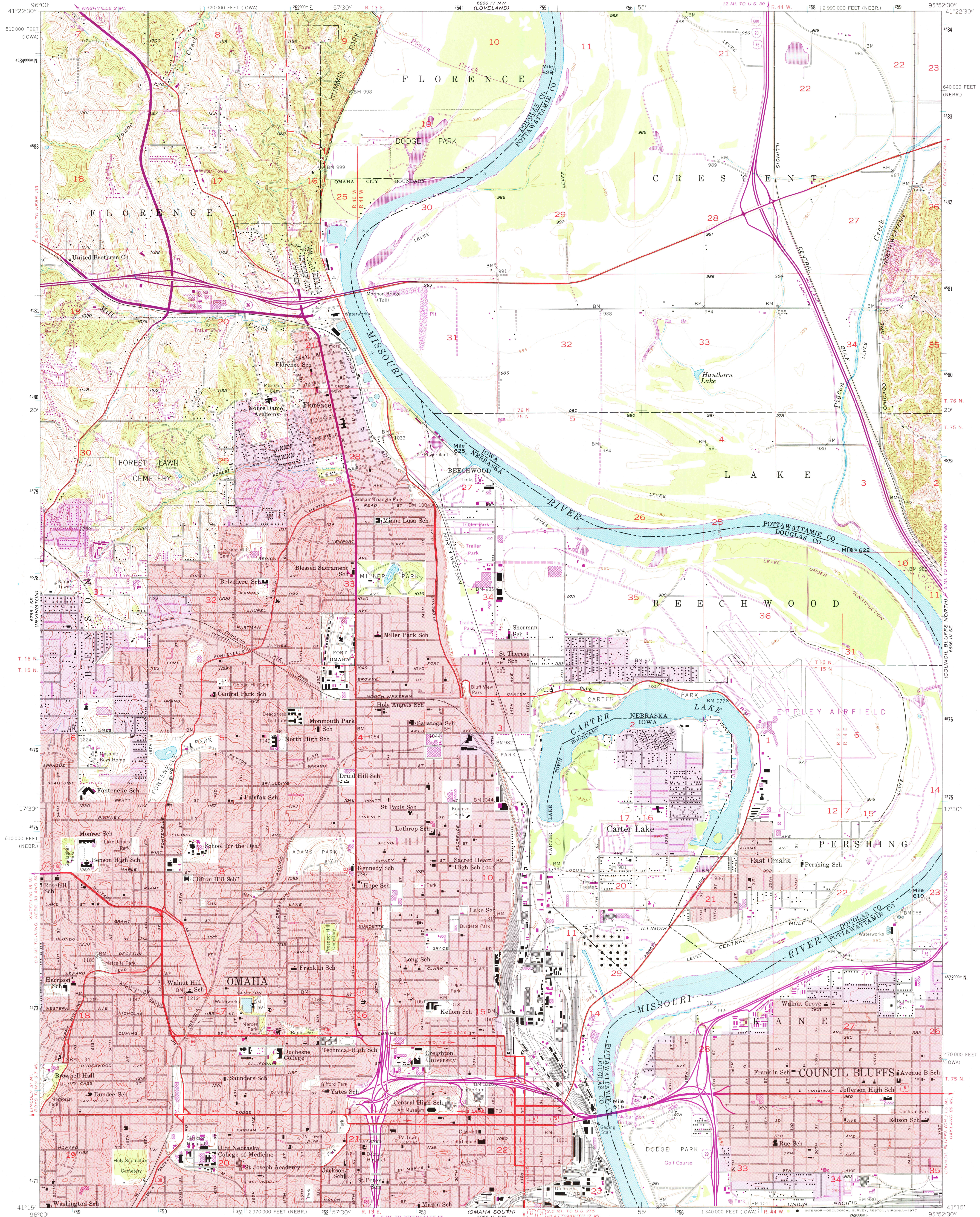


UNITED STATES  
DEPARTMENT OF THE INTERIOR  
GEOLOGICAL SURVEY

OMAHA NORTH QUADRANGLE  
NEBRASKA—IOWA  
7.5 MINUTE SERIES (TOPOGRAPHIC)



Mapped, edited, and published by the Geological Survey  
Control by USGS and USC&GS

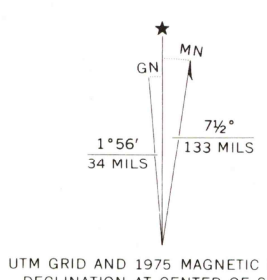
Topography from aerial photographs by Kelsh plotter  
and by planetable surveys 1956. Aerial photographs taken 1952

Polyconic projection. 1927 North American datum  
10,000-foot grids based on Nebraska coordinate system,  
south zone, and Iowa coordinate system, south zone  
1000-metre Universal Transverse Mercator grid ticks,  
zone 15, shown in blue

Red tint indicates areas in which only landmark buildings are shown

Revisions shown in purple compiled from aerial photographs  
taken 1969 and 1975. This information not field checked

Purple tint indicates extension of urban areas

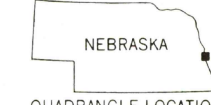


SCALE 1:24 000

CONTOUR INTERVAL 10 FEET  
DOTTED LINES REPRESENT 5 FOOT CONTOURS  
NATIONAL GEODETIC VERTICAL DATUM OF 1929

THIS MAP COMPLIES WITH NATIONAL MAP ACCURACY STANDARDS  
FOR SALE BY U. S. GEOLOGICAL SURVEY, DENVER, COLORADO 80225, OR RESTON, VIRGINIA 22092  
AND BY THE IOWA GEOLOGICAL SURVEY, IOWA CITY, IOWA 52240  
A FOLDER DESCRIBING TOPOGRAPHIC MAPS AND SYMBOLS IS AVAILABLE ON REQUEST

ROAD CLASSIFICATION  
Heavy-duty ——— Light-duty ———  
Medium-duty ——— Unimproved dirt ———  
U. S. Route ——— State Route ———  
Interstate Route ———



OMAHA NORTH, NEBR.—IOWA  
N4115—W9552.5/7.5

USGS  
Historical File  
Topographic Division

1956  
PHOTOREVISED 1969 AND 1975  
AMS 6866 IV SW—SERIES V875

AUG 0 1 1977