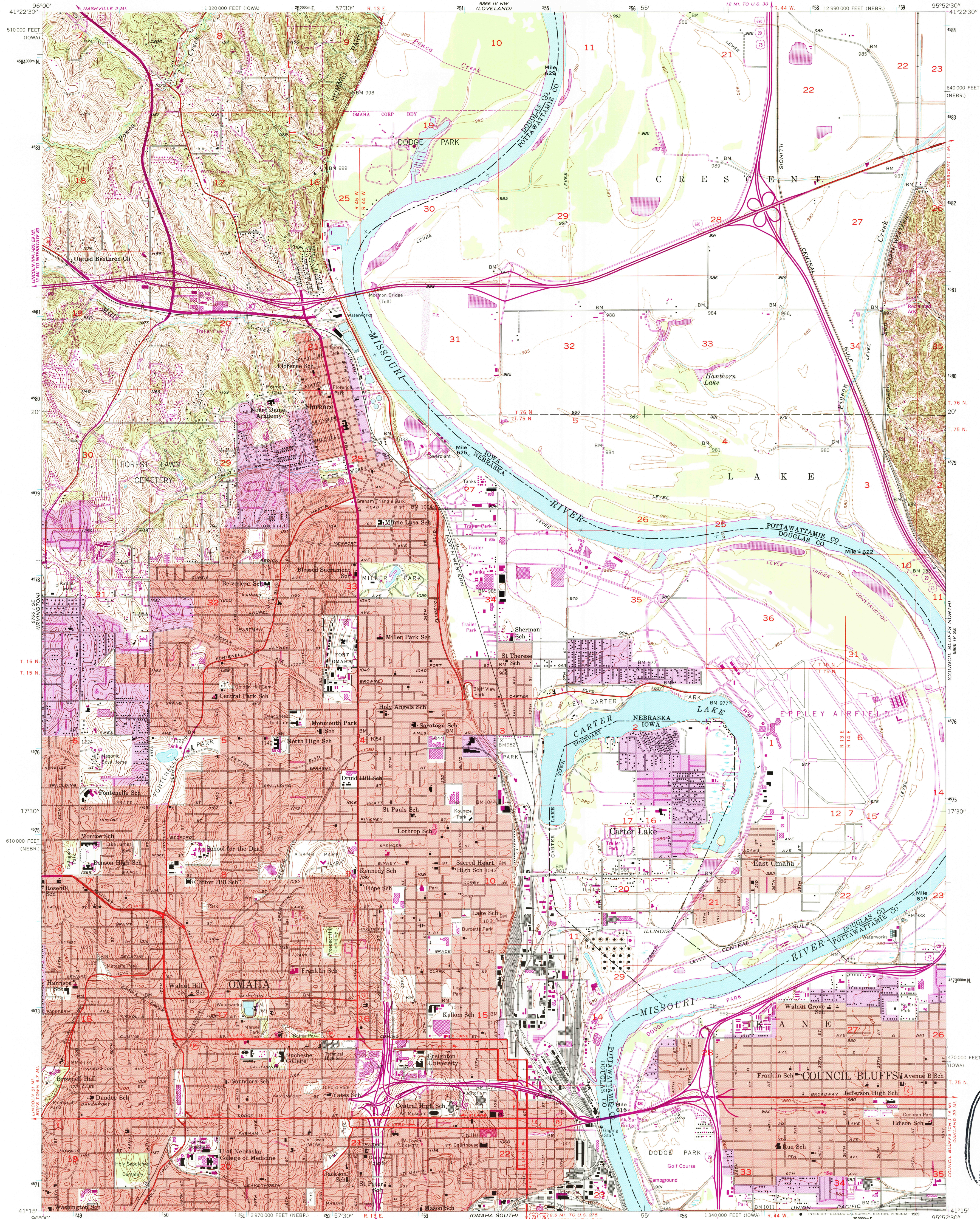
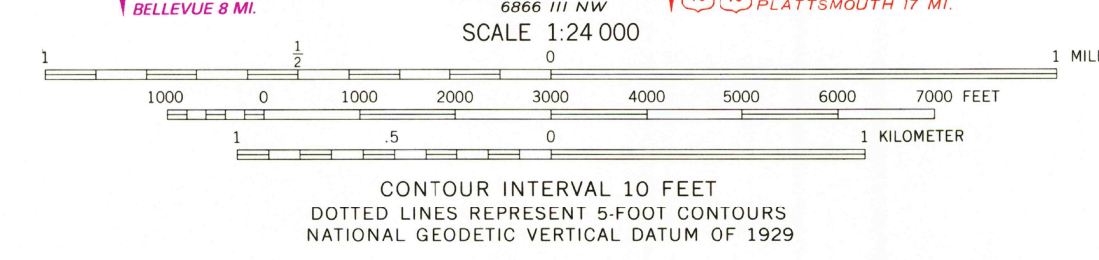
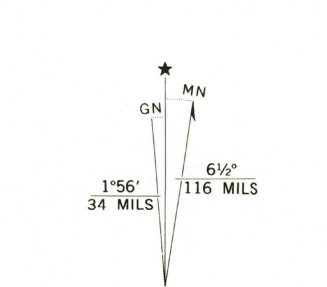


UNITED STATES  
DEPARTMENT OF THE INTERIOR  
GEOLOGICAL SURVEY

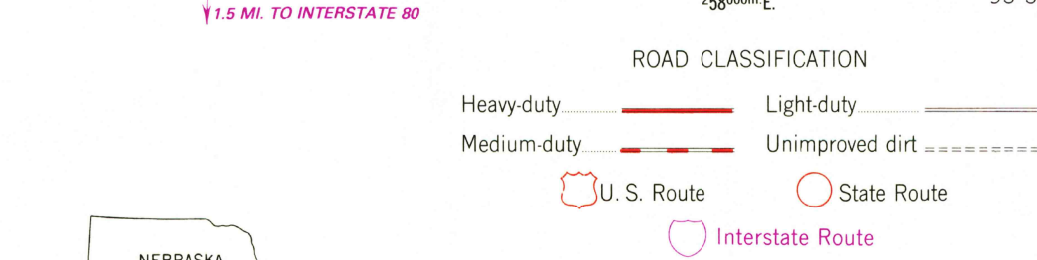
OMAHA NORTH QUADRANGLE  
NEBRASKA—IOWA  
7.5 MINUTE SERIES (TOPOGRAPHIC)



Maped, edited, and published by the Geological Survey  
Control by USGS and USC&GS  
Topography from aerial photographs by Kelsh plotter  
and by planetable surveys 1956. Aerial photographs taken 1952  
Polyconic projection. 1927 North American datum  
10,000-foot grid based on Nebraska coordinate system,  
south zone, and Iowa coordinate system, south zone  
1000-meter Universal Transverse Mercator grid ticks,  
zone 15, shown in blue  
Red tint indicates areas in which only landmark buildings are shown  
To place on the predicted North American Datum 1983,  
move the projection lines 4 meters north and  
24 meters east as shown by dashed corner ticks



THIS MAP COMPLIES WITH NATIONAL MAP ACCURACY STANDARDS  
FOR SALE BY U. S. GEOLOGICAL SURVEY, DENVER, COLORADO 80225, OR RESTON, VIRGINIA 22092  
AND IOWA GEOLOGICAL SURVEY, IOWA CITY, IOWA 52240  
A FOLDER DESCRIBING TOPOGRAPHIC MAPS AND SYMBOLS IS AVAILABLE ON REQUEST



OMAHA NORTH, NEBR.—IOWA  
41095-C8-TF-024  
1956  
PHOTOREVISED 1984  
DMA 6866 IV SW—SERIES 8785

USGS MAP HISTORICAL MAP  
FEB 02 1989  
REC'D FILE COPY