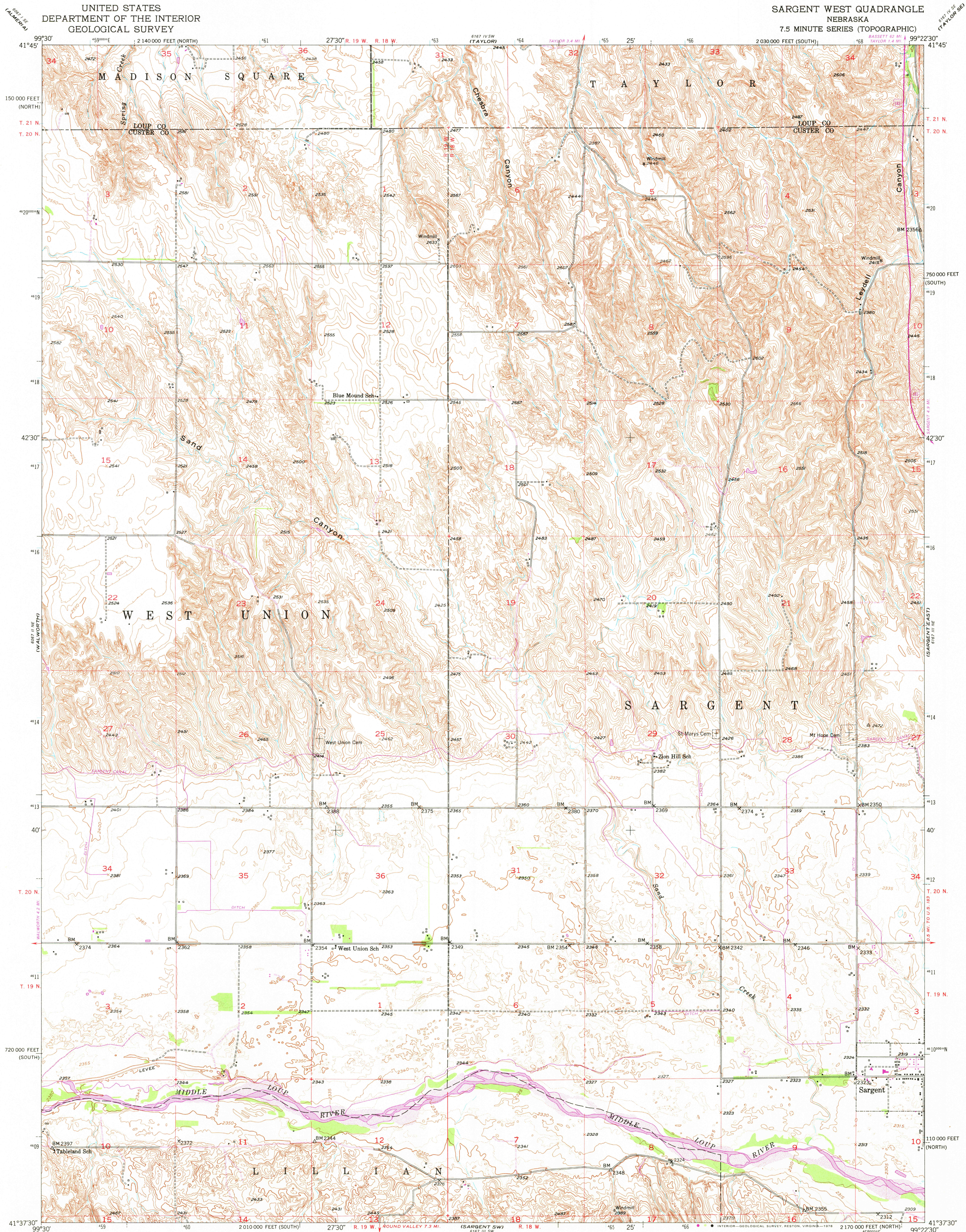


UNITED STATES  
DEPARTMENT OF THE INTERIOR  
GEOLOGICAL SURVEY

SARGENT WEST QUADRANGLE  
NEBRASKA  
7.5 MINUTE SERIES (TOPOGRAPHIC)



Mapped, edited, and published by the Geological Survey as part of the Department of the Interior program for the development of the Missouri River Basin.

Control by USGS, USC&GS, and U. S. Bureau of Reclamation.

Topography by multiplex methods from aerial photographs taken 1949, and in part by U. S. Bureau of Reclamation field check 1952.

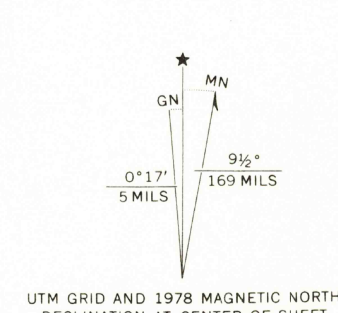
Polyconic projection. 1927 North American datum.

10,000-foot grids based on Nebraska coordinate system, north and south zones.

1000-meter Universal Transverse Mercator grid ticks, Zone 14, shown in blue.

Revisions shown in purple compiled from aerial photographs taken 1974. This information not field checked.

Map edited 1978.



THIS MAP COMPLIES WITH NATIONAL MAP ACCURACY STANDARDS FOR SALE BY U. S. GEOLOGICAL SURVEY, DENVER, COLORADO 80225, OR RESTON, VIRGINIA 22092. A FOLDER DESCRIBING TOPOGRAPHIC MAPS AND SYMBOLS IS AVAILABLE ON REQUEST.

**ROAD CLASSIFICATION**

Heavy-duty	4 LANE 16 LANE	Light-duty
Medium-duty	2 LANE 16 LANE	Unimproved dirt

U. S. Route      State Route

**SARGENT WEST, NEBR.**  
N4137.5-W9922.5/7.5  
1952  
PHOTOREVISED 1978  
AMS 6167 III TW-SERIES V875

JAN 05 1979

2150