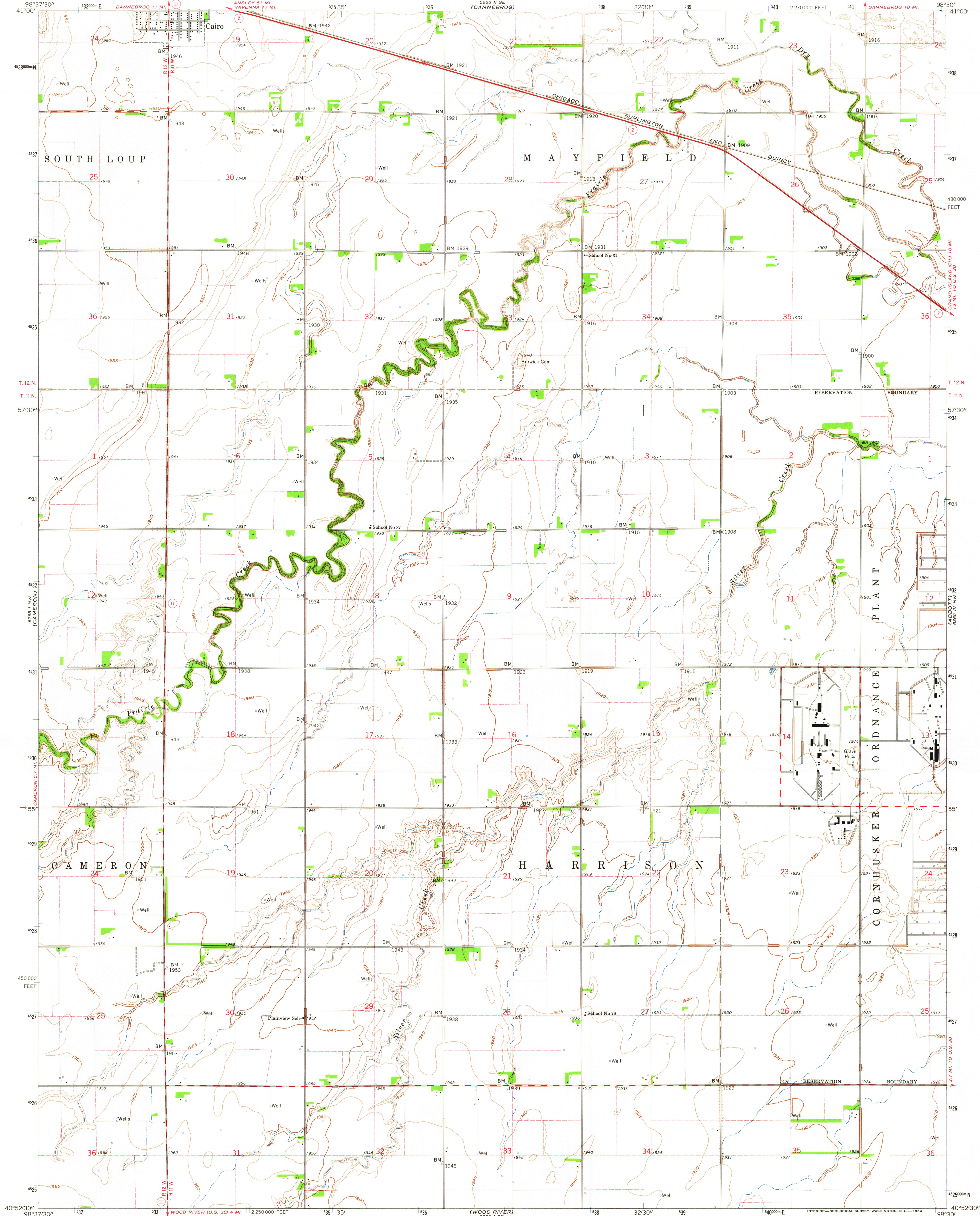


5661 85
(6061 US)

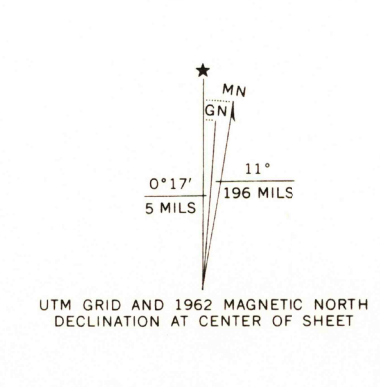
UNITED STATES
DEPARTMENT OF THE INTERIOR
GEOLOGICAL SURVEY

SHELTON NE QUADRANGLE
NEBRASKA—HALL CO.
7.5 MINUTE SERIES (TOPOGRAPHIC)

5661 85
(6061 US)



Mapped, edited, and published by the Geological Survey as part of the Department of the Interior program for the development of the Missouri River Basin. Control by USGS, USC&GS, and U. S. Bureau of Reclamation. Planimetry by photogrammetric methods from aerial photographs taken 1951. Topography by planetable surveys 1962. Polyconic projection. 1927 North American datum. 10,000-foot grid based on Nebraska coordinate system, south zone. 1000-meter Universal Transverse Mercator grid ticks, zone 14, shown in blue. Fine red dashed lines indicate selected fence and field lines where generally visible on aerial photographs. This information is unchecked.



THIS MAP COMPLIES WITH NATIONAL MAP ACCURACY STANDARDS
FOR SALE BY U. S. GEOLOGICAL SURVEY, DENVER 25, COLORADO OR WASHINGTON 25, D. C.
A FOLDER DESCRIBING TOPOGRAPHIC MAPS AND SYMBOLS IS AVAILABLE ON REQUEST



ROAD CLASSIFICATION
Heavy-duty ——— Light-duty ———
Medium-duty ——— Unimproved dirt ———
State Route —○—

SHELTON NE, NEBR.
N4052.5—W9830.7.5

AMS 6265 1 NE—SERIES V875

2295