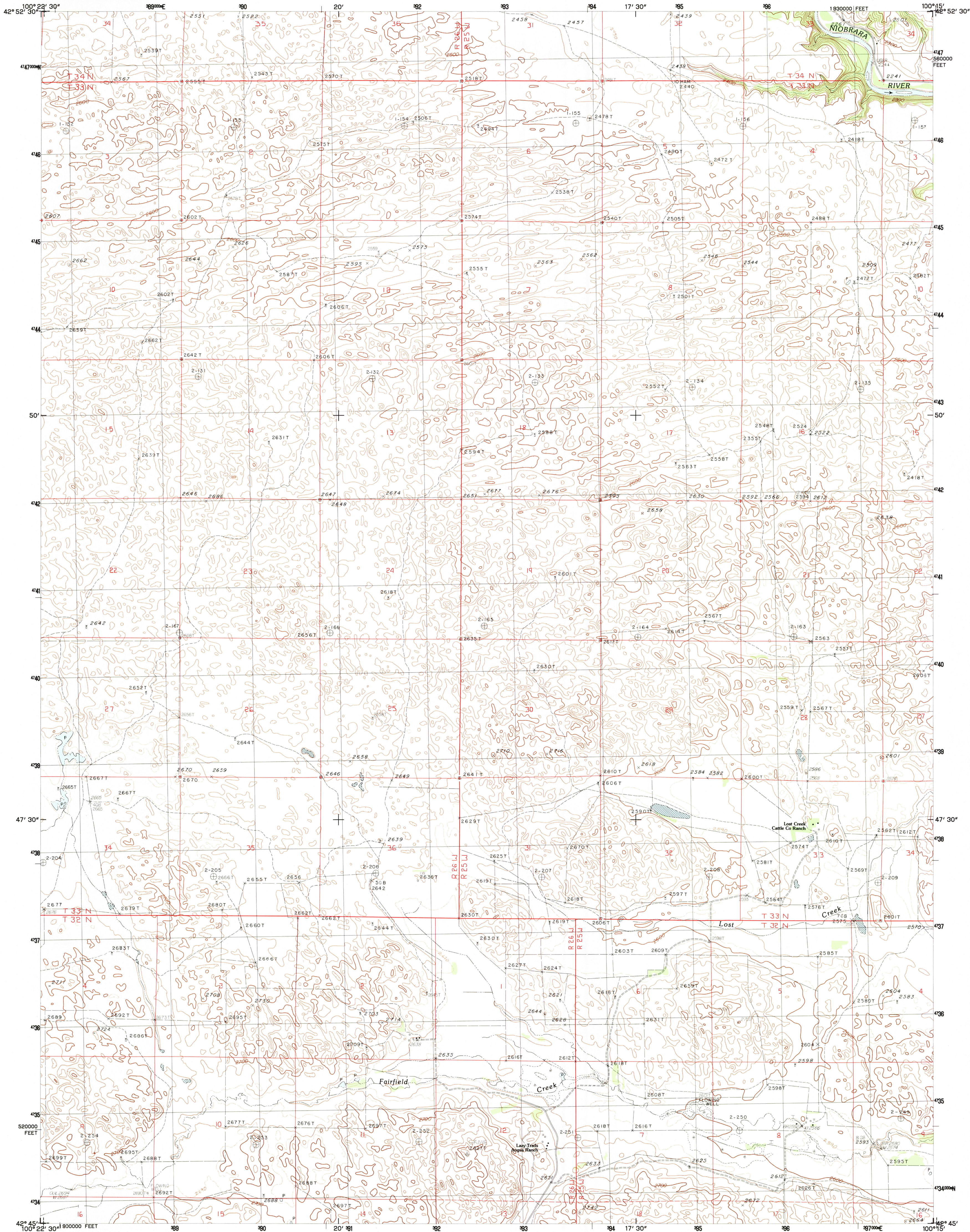


UNITED STATES  
DEPARTMENT OF THE INTERIOR  
GEOLOGICAL SURVEY

SPARKS SE QUADRANGLE  
NEBRASKA—CHERRY CO.  
7.5 MINUTE SERIES (TOPOGRAPHIC)



PRODUCED BY THE UNITED STATES GEOLOGICAL SURVEY  
CONTROL BY ..... USGS AND NOS/NOAA  
COMPILED FROM AERIAL PHOTOGRAPHS TAKEN ..... 1977  
FIELD CHECKED ..... 1980. MAP EDITED ..... 1983  
PROJECTION ..... LAMBERT CONFORMAL CONIC  
GRID: 1000-METER UNIVERSAL TRANSVERSE MERCATOR ..... ZONE 14  
10,000-FOOT STATE GRID TICKS ..... NEBRASKA, NORTH ZONE  
UTM GRID DECLINATION ..... 054° WEST  
1983 MAGNETIC NORTH DECLINATION ..... 930° EAST  
VERTICAL DATUM ..... NATIONAL GEODETIC VERTICAL DATUM OF 1989  
HORIZONTAL DATUM ..... 1927 NORTH AMERICAN DATUM  
To place on the predicted North American Datum of 1983,  
move the projection lines as shown by dashed corner ticks  
(6 meters north and 35 meters east)  
There may be private inholdings within the boundaries of any  
Federal and State reservations shown on this map

**PROVISIONAL MAP**  
Produced from original  
manuscript drawings. Infor-  
mation shown as of date of  
field check.

SCALE 1:24 000

1 0 1000 2000 3000 4000 5000 6000 7000 8000 9000 10 000  
MILES  
1 0 1000 2000 3000 4000 5000 6000 7000 8000 9000 10 000  
FEET  
1 0 1000 2000 3000 4000 5000 6000 7000 8000 9000 10 000  
KILOMETERS

CONTOUR INTERVAL 20 FEET  
SUPPLEMENTARY CONTOUR INTERVAL 10 FEET

To convert feet to meters multiply by .3048  
To convert meters to feet multiply by 3.2808

THIS MAP COMPLIES WITH NATIONAL MAP ACCURACY STANDARDS  
FOR SALE BY U.S. GEOLOGICAL SURVEY, DENVER, COLORADO 80225, OR RESTON, VIRGINIA 22092

ROAD LEGEND

Improved Road .....  
Unimproved Road .....  
Trail .....

Interstate Route ..... U.S. Route ..... State Route .....

QUADRANGLE LOCATION

NEBRASKA

ADJOINING 7.5 QUADRANGLE NAMES

1	2	3
4	5	6
7	8	

1 Cornell Dam  
2 Sparks  
3 Norden NW  
4 Thatcher  
5 Mulachoe Creek  
6 Arabia NW  
7 Arabia  
8 Wood Lake

SPARKS SE, NEBRASKA  
PROVISIONAL EDITION 1983

42100-G3-TF-024

RETURN TO:  
USGS AND HISTORICAL MAP ARCHIVES