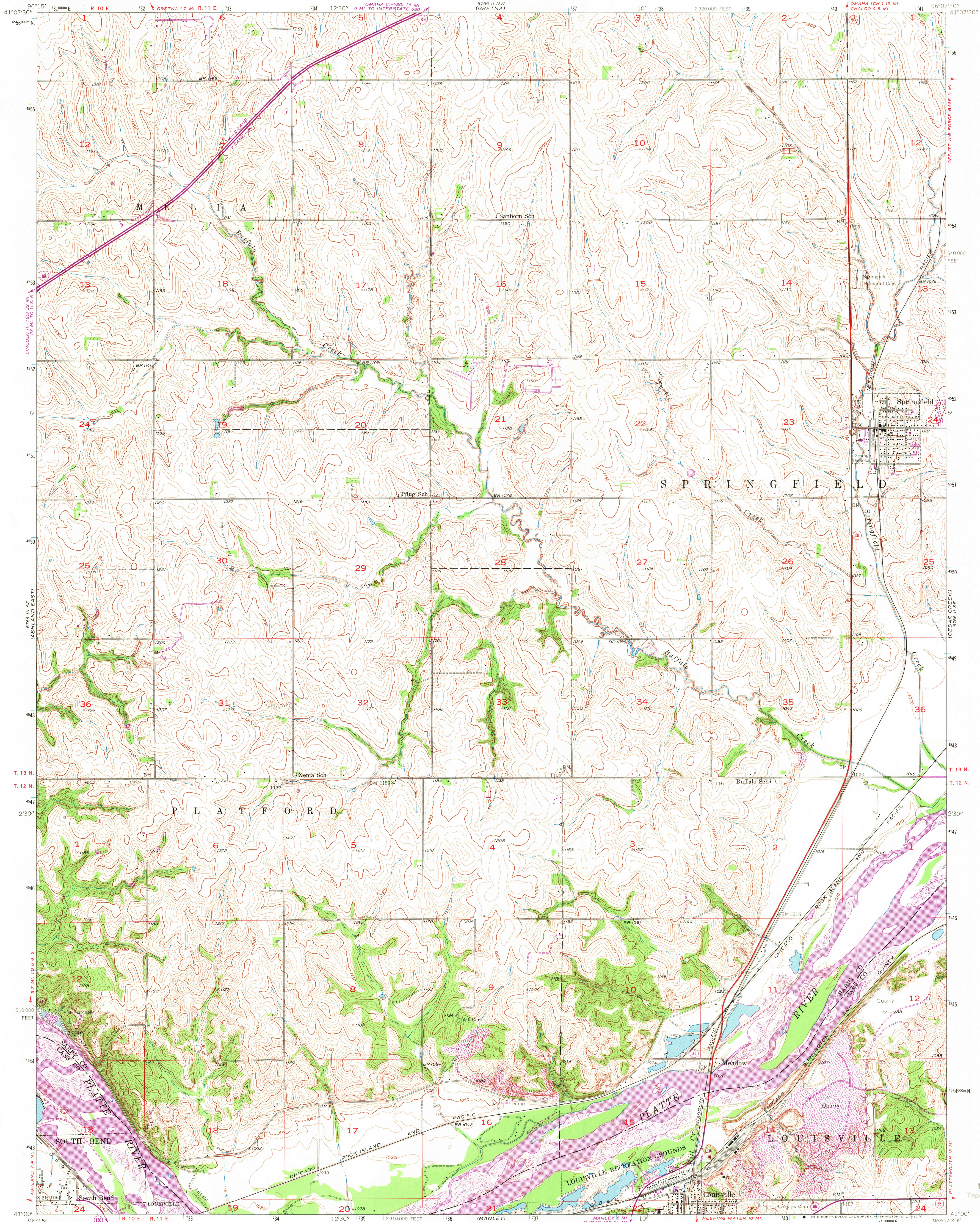


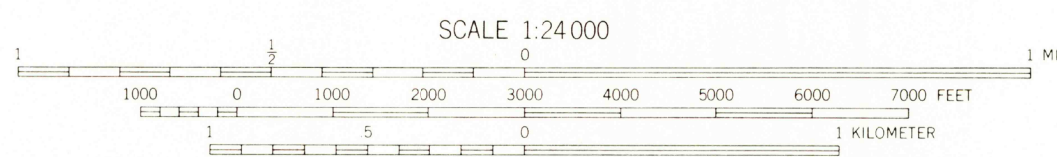
UNITED STATES
DEPARTMENT OF THE INTERIOR
GEOLOGICAL SURVEY

SPRINGFIELD QUADRANGLE
NEBRASKA
7.5 MINUTE SERIES (TOPOGRAPHIC)



Maped, edited, and published by the Geological Survey
Control by USGS and USC&GS
Topography from aerial photographs by Keish plotter
Aerial photographs taken 1955. Field check 1956
Polyconic projection. 1927 North American datum
10,000-foot grid based on Nebraska coordinate system, south zone
1000-meter Universal Transverse Mercator grid ticks,
zone 14, shown in blue
Revisions shown in purple compiled from aerial photographs
taken 1969. This information not field checked

UTM GRID AND 1969 MAGNETIC NORTH
DECLINATION AT CENTER OF SHEET



CONTOUR INTERVAL 10 FEET
DATUM IS MEAN SEA LEVEL

THIS MAP COMPLIES WITH NATIONAL MAP ACCURACY STANDARDS
FOR SALE BY U. S. GEOLOGICAL SURVEY, DENVER, COLORADO 80225 OR WASHINGTON, D. C. 20242
A FOLDER DESCRIBING TOPOGRAPHIC MAPS AND SYMBOLS IS AVAILABLE ON REQUEST

ROAD CLASSIFICATION
Heavy-duty ——— Light-duty ———
Medium-duty ——— Unimproved dirt ———
Interstate Route ——— State Route ———



U.S.G.S.
FILE COPY
TOPOGRAPHIC DIVISION

SPRINGFIELD, NEBR.
N4100-W9607.5/7.5

1956
PHOTOREVISED 1969
AMS 6766 II SW-SERIES V875

USGS
Historical File
Topographic Division

2095
MAY 1 1970