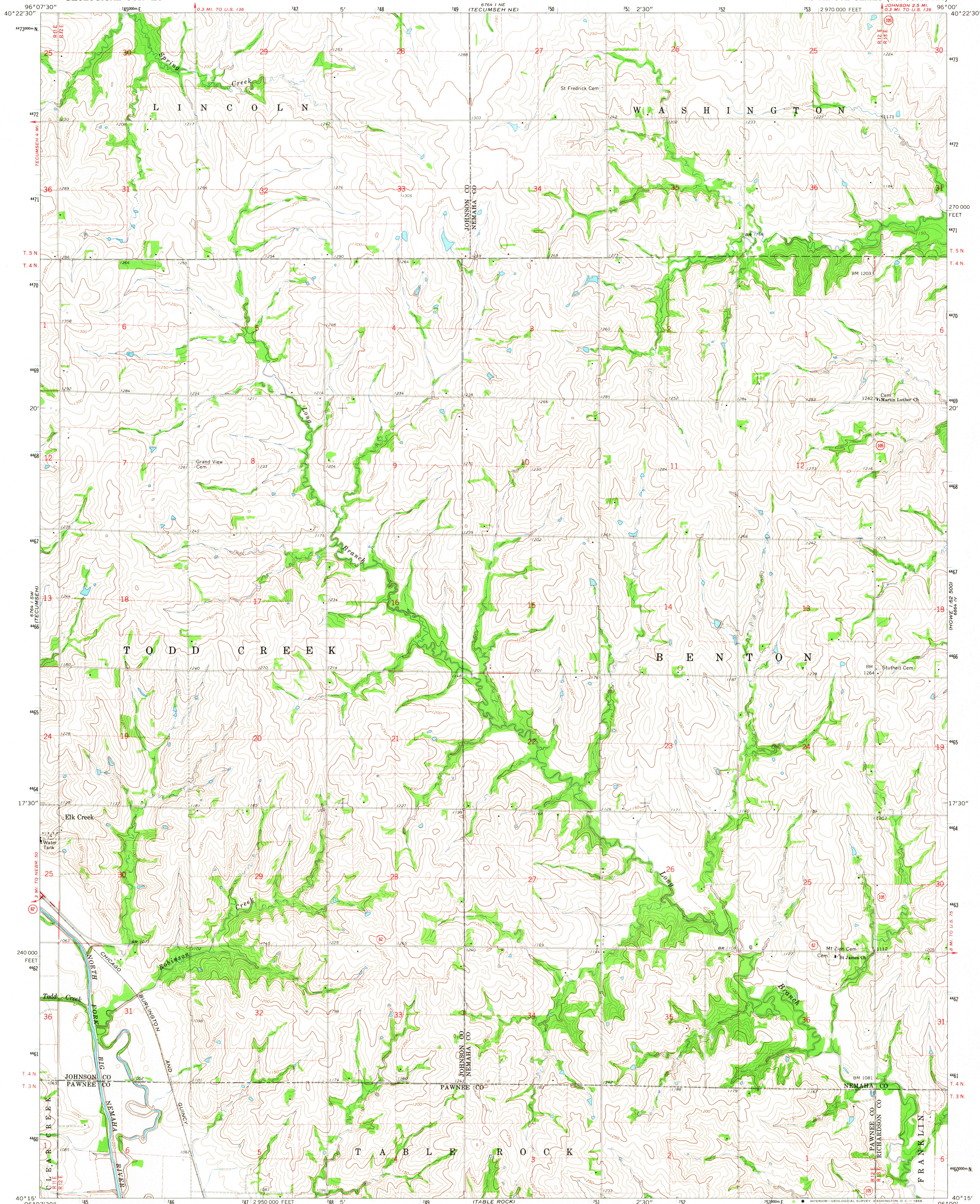
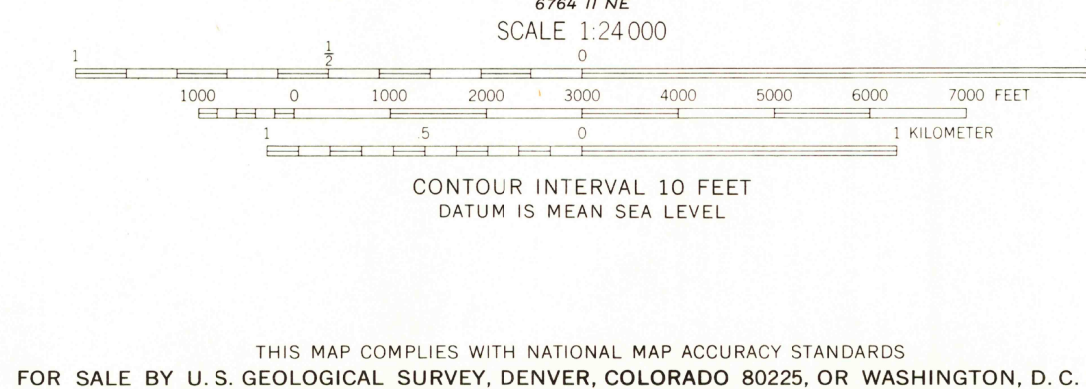


UNITED STATES  
DEPARTMENT OF THE INTERIOR  
GEOLOGICAL SURVEY

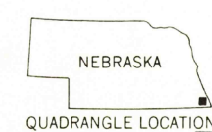
TECUMSEH SE QUADRANGLE  
NEBRASKA  
7.5 MINUTE SERIES (TOPOGRAPHIC)



Mapped, edited, and published by the Geological Survey as part of the Department of the Interior program for the development of the Missouri River Basin. Control by USGS and USC&GS. Topography by photogrammetric methods from aerial photographs taken 1963. Field checked 1965. Polyconic projection. 1927 North American datum. 10,000-foot grid based on Nebraska coordinate system, south zone. 1000-meter Universal Transverse Mercator grid ticks, zone 14, shown in blue. Fine red dashed lines indicate selected fence and field lines where generally visible on aerial photographs. This information is unchecked.



ROAD CLASSIFICATION  
Medium-duty ——— Light-duty ———  
Unimproved dirt ———  
State Route ———



U.S.G.S.

TECUMSEH SE, NEBR.  
N4015—W3600/7.5  
1965

TOPOGRAPHIC DIVISION AMS 6764 I SE—SERIES W875