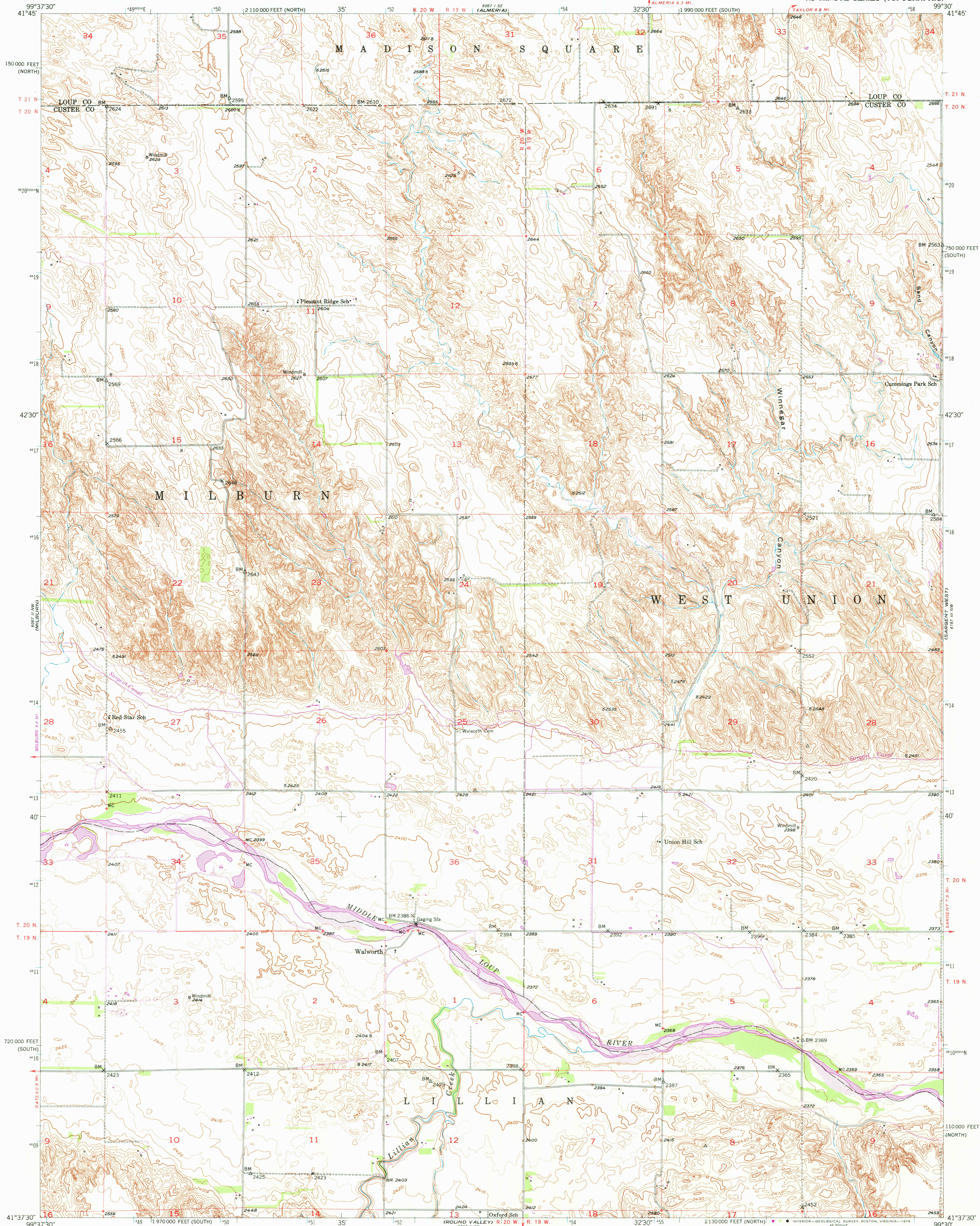
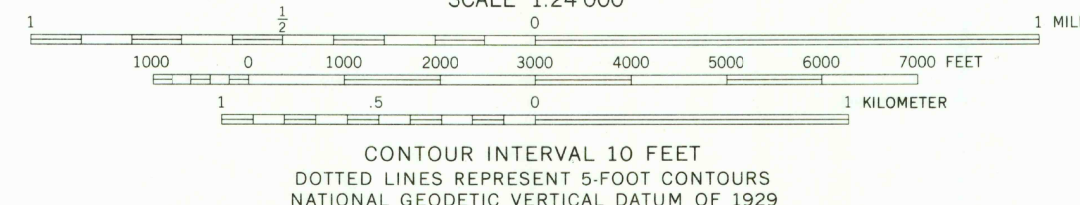
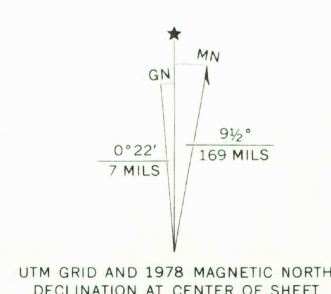


UNITED STATES
DEPARTMENT OF THE INTERIOR
GEOLOGICAL SURVEY

WALWORTH QUADRANGLE
NEBRASKA
7.5 MINUTE SERIES (TOPOGRAPHIC)



Mapped, edited, and published by the Geological Survey as part of the Department of the Interior program for the development of the Missouri River Basin. Control by USGS, USC&GS, and U. S. Bureau of Reclamation. Topography by multiplex methods from aerial photographs taken 1949, by plane-table surveys 1951, and in part by U.S. Bureau of Reclamation. Field Check 1951. Polyconic projection. 1927 North American datum 10,000-foot grids based on Nebraska coordinate system, north and south zones. 1000-meter Universal Transverse Mercator grid ticks Zone 14, shown in blue. Revisions shown in purple compiled from aerial photographs taken 1974. This information not field checked. Map edited 1978.



ROAD CLASSIFICATION			
Heavy-duty	4 LANE 16 LANE	Light-duty	
Medium-duty	4 LANE 16 LANE	Unimproved dirt	
U. S. Route		State Route	

THIS MAP COMPLIES WITH NATIONAL MAP ACCURACY STANDARDS. FOR SALE BY U. S. GEOLOGICAL SURVEY, DENVER, COLORADO 80225 OR RESTON, VIRGINIA 22092. A FOLDER DESCRIBING TOPOGRAPHIC MAPS AND SYMBOLS IS AVAILABLE ON REQUEST.

USGS
Historical File
Topographic Division

WALWORTH, NEBR.
N4137.5-W9930/7.5
1951
PHOTOREVISED 1978
AMS 6067 II NE-SERIES 8V75

SEP 18 1978