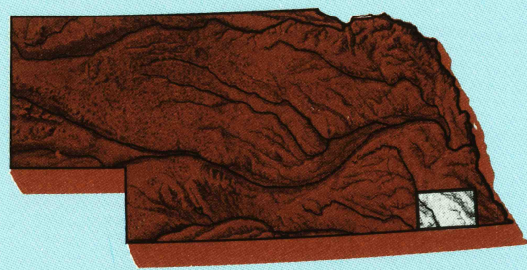


# Beatrice

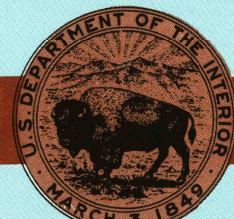
## NEBRASKA-KANSAS

1:100 000-scale metric  
topographic map



30 X 60 MINUTE QUADRANGLE  
SHOWING

- Contours and elevations in meters
- Highways, roads and other manmade structures
- Water features
- Woodland areas
- Geographic names



GEOLOGICAL SURVEY

1986  
PHOTOINSPECTED 1991

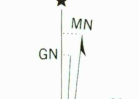
Produced by the United States Geological Survey  
Compiled from USGS 1:24 000-scale topographic maps dated 1957-1980. Partially revised from aerial photographs taken 1981-82 and other source data. Revised information not field checked.  
Map edited 1986.

Projection and 10 000-meter grid, zone 14  
Universal Transverse Mercator  
25 000-foot grid ticks based on Nebraska coordinate system, south zone. 1927 North American Datum  
To place on the predicted North American Datum 1983 move the projection lines 3 meters north and 35 meters east. There may be private inholdings within the boundaries of the National or State reservations shown on this map.

Map photoinspected using 1988 and 1991 photographs  
No major culture or drainage changes found.

CONTOUR INTERVAL 10 METERS  
NATIONAL GEODETIC VERTICAL DATUM OF 1929  
ELEVATIONS SHOWN TO THE NEAREST METER.

THIS MAP COMPLIES WITH NATIONAL MAP ACCURACY STANDARDS

CONVERSION TABLE		DECLINATION DIAGRAM		ADJOINING MAPS			
Meters	Feet			1	2	3	
1	3.2808			4	5		
2	6.5617						
3	9.8425						
4	13.1234						
5	16.4042						
6	19.6850						
7	22.9658						
8	26.2467						
9	29.5276						
10	32.8084						
To convert meters to feet: multiply by 3.2808		UTM grid convergence (GN) and 1986 magnetic declination (MN) at center of map. Diagram is approximate		1 York 2 Lincoln 3 Nebraska City 4 Fairbury 5 Falls City 6 Concordia 7 Blue Rapids 8 Atchison			
To convert feet to meters multiply by 0.3048							

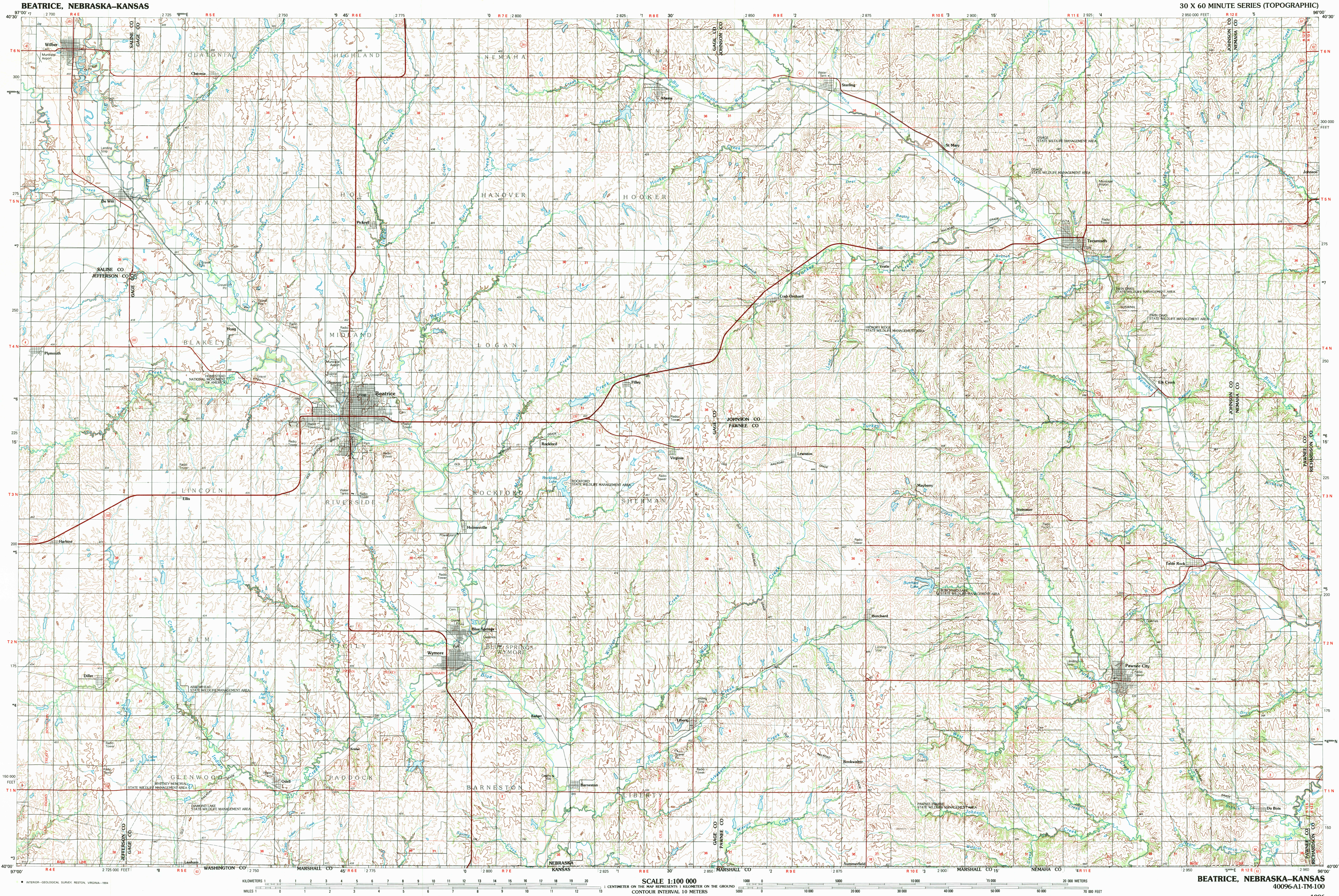
FOR SALE BY U. S. GEOLOGICAL SURVEY, DENVER, COLORADO 80225  
OR RESTON, VIRGINIA 22092

### Topographic Map Symbols

Primary highway, hard surface	Secondary highway, hard surface	Light duty road, principal street, hard or improved surface	Cover road or gravel road	Route marker: Interstate, U. S. State	Railroad: standard gauge; narrow gauge	Bridge: overpass; underpass	Tunnel: road; railroad	Built up area, locality, elevation	Airport; landing field; landing strip	National boundary	State boundary	County boundary	National or State reservation boundary	Land grant boundary	U. S. public lands survey: range, township, section	Range, township; section line; protected	Power transmission line: pipeline	Dam; dam with lock	Cemetery; building	Woodsland; water with spring	Mine shaft; adit or cave; mine, quarry; gravel pit	Campground; picnic area; U. S. location monument	Ruins; cliff dwelling	Distorted surface: strip mine, lava; sand	Contour: index; intermediate; supplementary	Bathymetric contours: index; intermediate	Stream, lake; perennial; intermittent	Rapids, large and small; falls, large and small	Area to be submerged; marsh, swamp	Land subject to controlled inundation; woodland	Scrub; mangrove	Orchard; vineyard
-------------------------------	---------------------------------	---	---------------------------	---------------------------------------	--	-----------------------------	------------------------	------------------------------------	---------------------------------------	-------------------	----------------	-----------------	--	---------------------	---	--	-----------------------------------	--------------------	--------------------	------------------------------	--	--	-----------------------	---	---	---	---------------------------------------	---	------------------------------------	---	-----------------	-------------------

A pamphlet describing topographic maps is available on request.

RETURNS TO:  
USGS AND HISTORICAL MAP ARCHIVES



BEATRICE, NEBRASKA-KANSAS  
40096-A1-TM-100

SCALE 1:100 000  
1 CENTIMETER ON THE MAP REPRESENTS 1 KILOMETER ON THE GROUND  
CONTOUR INTERVAL 10 METERS

INTERIOR - GEOLOGICAL SURVEY, RESTON, VIRGINIA - 1984