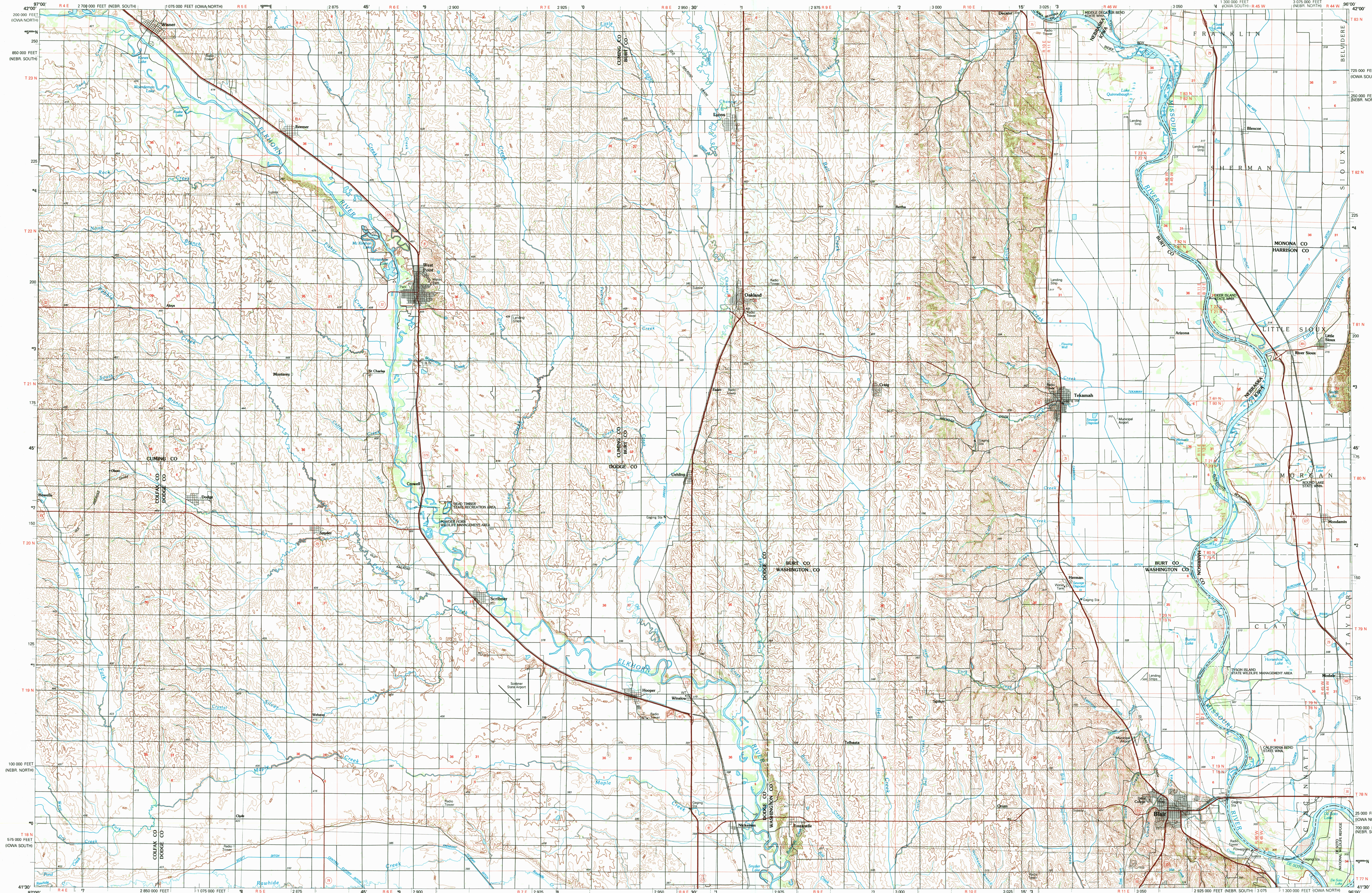
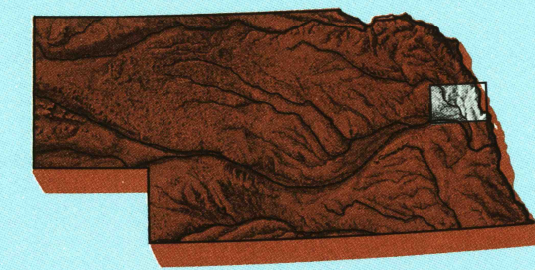
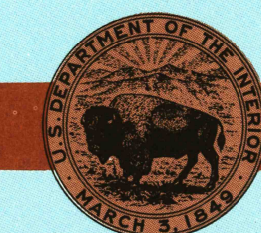


BLAIR, NEBRASKA-IOWA

30 X 60 MINUTE SERIES (TOPOGRAPHIC)

Blair
NEBRASKA-IOWA1:100 000-scale metric
topographic map30 X 60 MINUTE QUADRANGLE
SHOWING

- Contours and elevations in meters
- Highways, roads and other manmade structures
- Water features
- Woodland areas
- Geographic names



GEOLOGICAL SURVEY

1986
PHOTOINSPECTED 1988

Produced by the United States Geological Survey
Compiled from USGS 1:24 000-scale topographic maps dated 1963-1983. Planimetry revised from aerial photographs taken 1981 and other source data. Revised information not field checked. Map edited 1986 1927 North American Datum (NAD 27). Projection and 10 000-meter grid: Universal Transverse Mercator, zone 14 25 000-foot ticks: Nebraska coordinate system, north and south zones and Iowa coordinate system, south and north zones

The difference between NAD 27 and North American Datum of 1983 (NAD 83) is too small to show at this scale. The values of the shift between the datums for 7.5-minute intersections are given in USGS Bulletin 1875.

There may be private inholdings within the boundaries of the National or State reservations shown on this map.

Map photoinspected using 1987-88 photographs. No major culture or drainage changes found.

CONTOUR INTERVAL 10 METERS
SUPPLEMENTARY CONTOUR INTERVAL 5 METERS
NATIONAL GEODETIC VERTICAL DATUM OF 1929
ELEVATIONS SHOWN TO THE NEAREST METER

THIS MAP COMPLIES WITH NATIONAL MAP ACCURACY STANDARDS

CONVERSION TABLE		DECLINATION DIAGRAM		ADJOINING MAPS		
Meters	Feet			1	2	3
1	3.2808	<p>UTM grid convergence (GN) and 1986 magnetic declination (MN) at center of map Diagram is approximate</p>		4	5	6
2	6.5617			7	8	
3	9.8425					
4	13.1234					
5	16.4042					
6	19.6850					
7	22.9659					
8	26.2467					
9	29.5276					
10	32.8084					
To convert meters to feet multiply by 3.2808				<p>1 Norfolk 2 Sioux City South 3 Ida Grove 4 Stanton 5 Harlan 6 David City 7 Fremont 8 Omaha</p>		
To convert feet to meters multiply by 0.3048						

FOR SALE BY U. S. GEOLOGICAL SURVEY, DENVER, COLORADO 80225
OR RESTON, VIRGINIA 22092

Topographic Map Symbols

Primary highway, hard surface	
Secondary highway, hard surface	
Light duty road, principal street, hard or improved surface	
Other road or street, soft	
Route marker: Interstate, U. S. State	
Railroad: standard gage; narrow gage	
Bridge: overpass; underpass	
Tunnel: road; railroad	
Built up area, locality, elevation	
Airport; landing field; landing strip	
National boundary	
State boundary	
County boundary	
National or State reservation boundary	
Land grant boundary	
U. S. public lands survey: range, township; section	
Range, township; section line; patented	
Power transmission line: pipeline	
Dam; dam with lock	
Cemetery; building	
Windmill; water well; spring	
Mine shaft; adit or cave; mine, quarry; gravel pit	
Campground; picnic area; U. S. location monument	
Ruins; cliff dwelling	
Distorted surface: strip mine, lava; sand	
Contours: index; intermediate; supplementary	
Bathymetric contours: index; intermediate	
Stream, lake, perennial; intermittent	
Rapids, large and small; falls, large and small	
Area to be submerged; marsh, swamp	
Land subject to controlled inundation; woodland	
Scrub; mangrove	
Orchard; vineyard	

BLAIR, NEBRASKA-IOWA
41096-E1-TM-100
1986

PHOTOINSPECTED 1988

SCALE 1:100 000

1 CENTIMETER ON THE MAP REPRESENTS 1 KILOMETER ON THE GROUND
CONTOUR INTERVAL 10 METERS
SUPPLEMENTARY CONTOUR INTERVAL 5 METERS

• INTERIOR—GEOLOGICAL SURVEY, RESTON, VIRGINIA 22092

A pamphlet describing topographic maps available in the archives

OCT 25 1994

REC'D FILE COPY