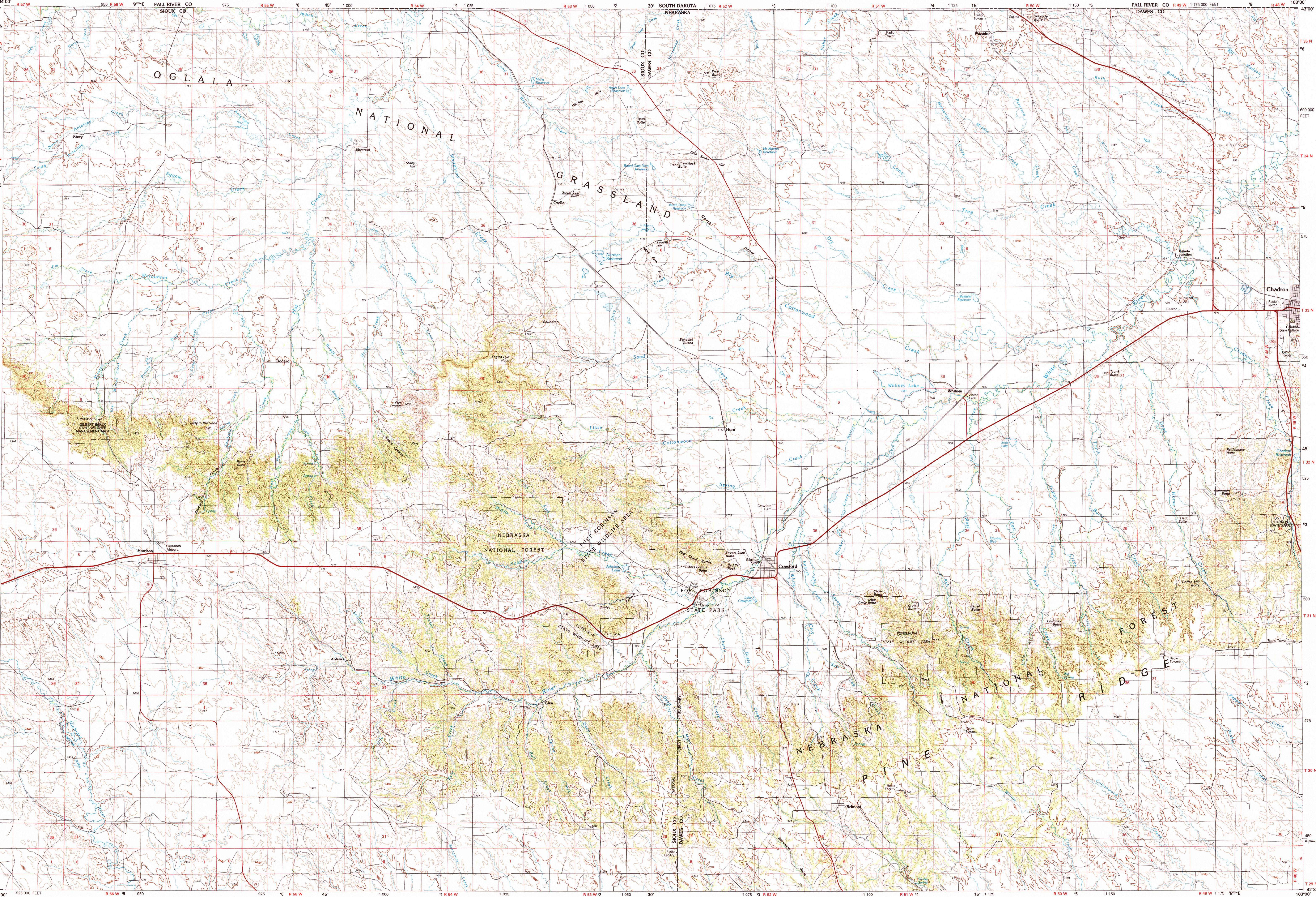


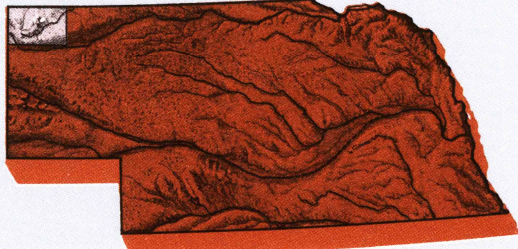
CRAWFORD, NEBRASKA

30 X 60 MINUTE SERIES (TOPOGRAPHIC)



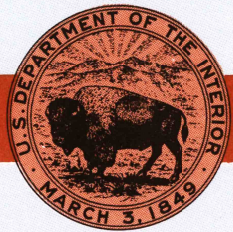
Crawford  
NEBRASKA

1:100 000-scale metric  
topographic map



30 X 60 MINUTE QUADRANGLE  
SHOWING

- Contours and elevations in meters
- Highways, roads and other manmade structures
- Water features
- Woodland areas
- Geographic names



GEOLOGICAL SURVEY

1986

Produced by the United States Geological Survey

Compiled from USGS 1:24 000-scale topographic maps dated 1970-1980. Planimetry revised from aerial photographs taken 1984 and other source data. Revised information not field checked. Map edited 1986.

Projection and 10 000-meter grid, zone 13. Universal Transverse Mercator. 25 000-foot grid ticks based on Nebraska coordinate systems, north zone. 1927 North American Datum. To place on the predicted North American Datum 1983 move the projection lines 7 meters north and 43 meters east. There may be private inholdings within the boundaries of the National or State reservations shown on this map.

CONTOUR INTERVAL 20 METERS  
NATIONAL GEODETIC VERTICAL DATUM OF 1929  
ELEVATIONS SHOWN TO THE NEAREST METER

THIS MAP COMPLIES WITH NATIONAL MAP ACCURACY STANDARDS

CONVERSION TABLE		DECLINATION DIAGRAM		ADJOINING MAPS				
Meters	Feet			1	2	3		
1	3.2808			4	5			
2	6.5617							
4	8.4625							
5	13.1234							
6	18.6842							
8	19.6850							
10	22.9655			6	7	8		
12	26.2467							
15	29.5276							
18	32.8084							
To convert meters to feet multiply by 3.2808								
To convert feet to meters multiply by 0.3048								

UTM grid convergence (GN) and 1986 magnetic declination (MN) at center of map

Diagram is approximate

1 Lance Creek

2 Hot Springs

3 Pine Ridge

4 Lusk

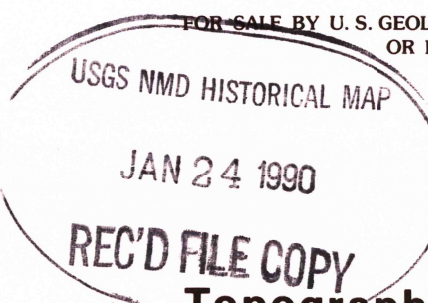
5 Gordon

6 Torrington

7 Hemingford

8 Alliance

FOR SALE BY U. S. GEOLOGICAL SURVEY, DENVER, COLORADO 80225  
OR RESTON, VIRGINIA 22092



Topographic Map Symbols

Primary highway, hard surface	
Secondary highway, hard surface	
Light duty road, principal street, hard or improved surface	
Other road or street; trail	
Route marker: Interstate; U. S.; State	
Railroad: standard gage; narrow gage	
Bridge; overpass; underpass	
Tunnel: road; railroad	
Built up area; locality; elevation	
Airport; landing field; landing strip	
National boundary	
State boundary	
County boundary	
National or State reservation boundary	
Land grant boundary	
U. S. public lands survey; range, township; section	
Range, township; section line; protracted	
Power transmission line; pipeline	
Dam; dam with lock	
Cemetery; building	
Windmill; water well; spring	
Mine shaft; soil or cave; mine, quarry; gravel pit	
Campground; picnic area; U. S. location monument	
Ruins; cliff dwelling	
Distorted surface: strip mine, lava, sand	
Contours: index; intermediate; supplementary	
Relief: water with spring	
Stream, lake; perennial; intermittent	
Rapids, large and small; falls, large and small	
Area to be submerged; marsh, swamp	
Land subject to controlled inundation; woodland	
Scrub; mangrove	
Orchard; vineyard	

A pamphlet describing topographic maps is available on request

INTERIOR—GEOLOGICAL SURVEY, RESTON, VIRGINIA—1986

KILOMETERS 1 0 1 2 3 4 5 6 7 8 9 10 11 12 13 14 15 16 17 18 19 20  
MILES 1 0 1 2 3 4 5 6 7 8 9 10 11 12 13 14 15 16 17 18 19 20

SCALE 1:100 000  
1 CENTIMETER ON THE MAP REPRESENTS 1 KILOMETER ON THE GROUND  
CONTOUR INTERVAL 20 METERS

CRAWFORD, NEBRASKA

42103-E1-TM-100

1986