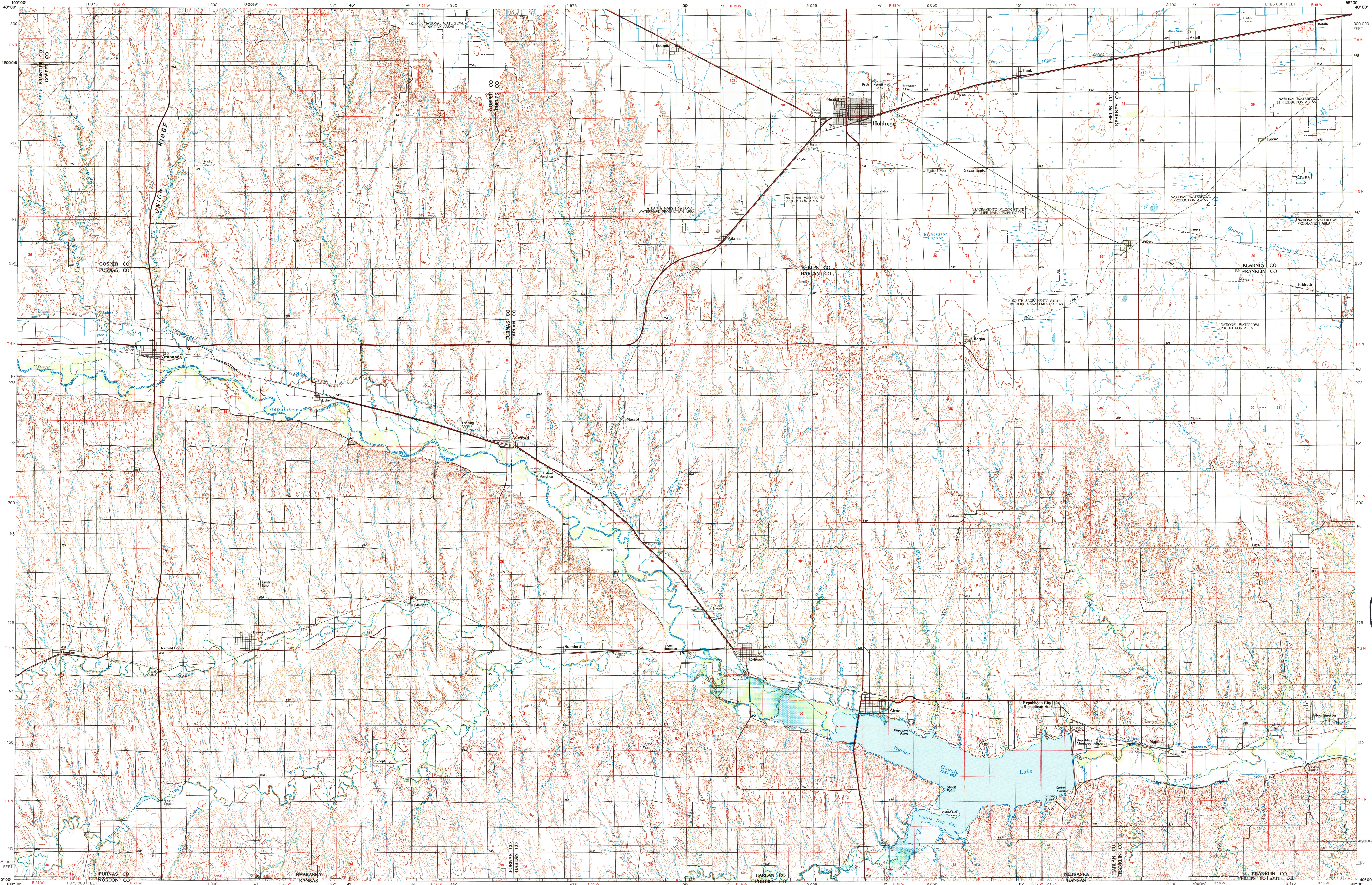
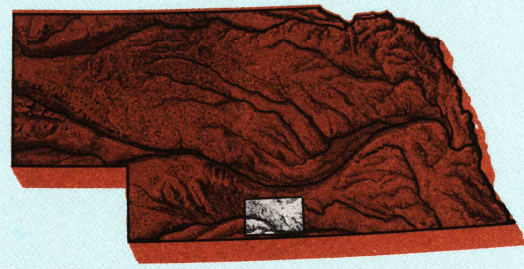


HOLDREGE, NEBRASKA-KANSAS



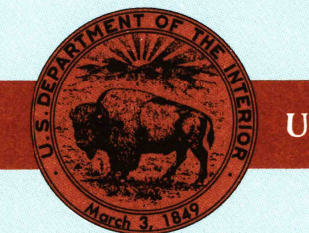
Holdrege  
NEBRASKA-KANSAS

1:100 000-scale metric  
topographic map



30 X 60 MINUTE QUADRANGLE  
SHOWING

- Contours and elevations  
in meters
- Highways, roads and other  
manmade structures
- Water features
- Woodland areas
- Geographic names



U. S. GEOLOGICAL SURVEY

1986

PHOTOINSPECTED 1990

Produced by the United States Geological Survey

Compiled from USGS 1:24 000-scale topographic  
maps dated 1957-1974. Planimetry revised from  
aerial photographs taken 1981 and other source  
data. Revised information not field checked. Map edited 1986  
1927 North American Datum (NAD 27). Projection and  
10 000-meter grid: Universal Transverse Mercator, zone 14  
25 000-foot ticks: Nebraska coordinate system, south zone

The difference between NAD 27 and North American Datum of  
1983 (NAD 83) is too small to show at this scale. The  
values of the shift between the datums for 7.5-minute  
intersections are given in USGS Bulletin 1875.

There may be private inholdings within the boundaries of  
the National or State reservations shown on this map

Map photoinspected using 1988-90 photographs  
No major culture or drainage changes found

CONTOUR INTERVAL 10 METERS  
NATIONAL GEODETIC VERTICAL DATUM OF 1929  
ELEVATIONS SHOWN TO THE NEAREST METER

THIS MAP COMPLIES WITH NATIONAL MAP ACCURACY STANDARDS

CONVERSION TABLE

Meters	Feet
1	3.2808
2	6.5617
3	9.8425
4	13.1234
5	16.4042
6	19.6850
7	22.9659
8	26.2467
9	29.5275
10	32.8084

To convert meters to feet  
multiply by 3.2808

To convert feet to meters  
multiply by 0.3048

DECLINATION DIAGRAM

UTM grid convergence  
(GN) and 1986 magnetic  
declination (MN)  
at center of map  
Diagram is approximate

ADJOINING MAPS

1	2	3
4	5	
6	7	8

1 Gothenburg

2 Kearney

3 Grand Island

4 McCook

5 Red Cloud

6 Oberlin

7 Norton

8 Smith Center