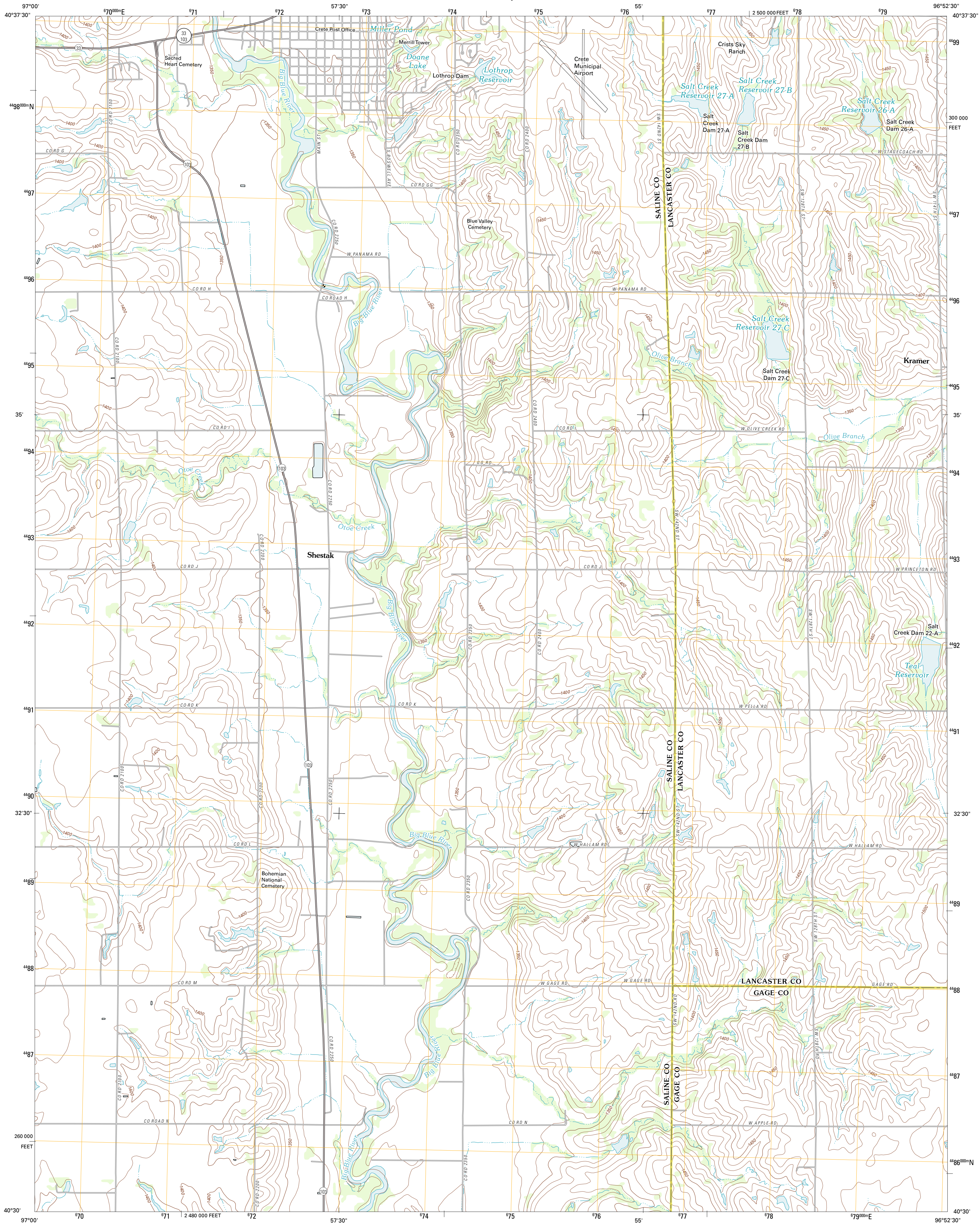




U.S. DEPARTMENT OF THE INTERIOR  
U. S. GEOLOGICAL SURVEY

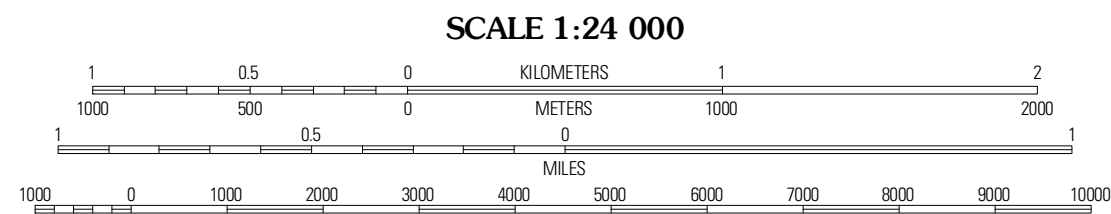
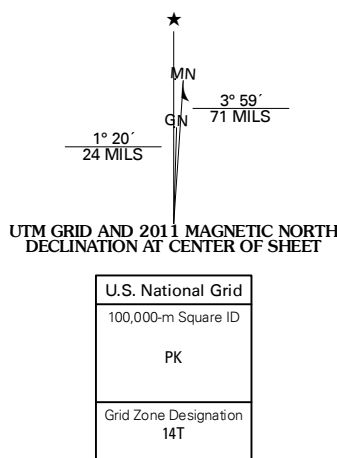


CRETE SOUTH QUADRANGLE  
NEBRASKA  
7.5-MINUTE SERIES



Produced by the United States Geological Survey  
North American Datum of 1983 (NAD83)  
World Geodetic System of 1984 (WGS84). Projection and  
1 000-meter grid: Universal Transverse Mercator, Zone 14T  
10 000-foot ticks: Nebraska Coordinate System of 1983

Imagery.....NAIP, June 2010  
Roads.....©2006-2011, TomTom  
Names.....GNS, 2011  
Hydrography.....National Hydrography Dataset, 2010  
Contours.....National Elevation Dataset, 2000  
Boundaries.....Census, IBWC, IBC, USGS, 1972 - 2010



ADJOINING 7.5' QUADRANGLES		
Dorchester	Crete North	Denton
Pleasant Hill	Crete South	Hullam
Swanton	Wilber	Cliftonia

CRETE SOUTH, NE  
2011