

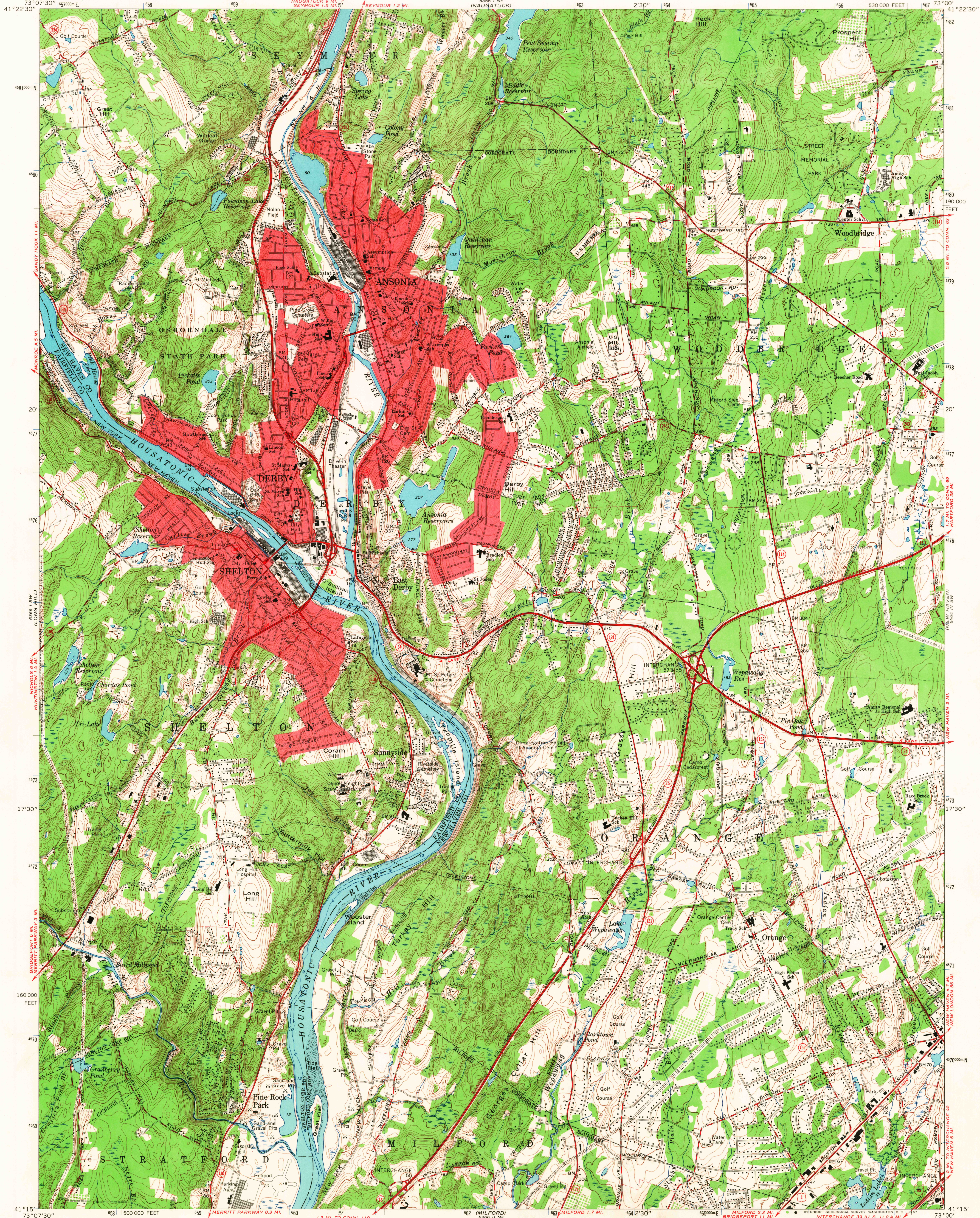
6366 I SE-
SOUTHURY

UNITED STATES
DEPARTMENT OF THE INTERIOR
GEOLOGICAL SURVEY

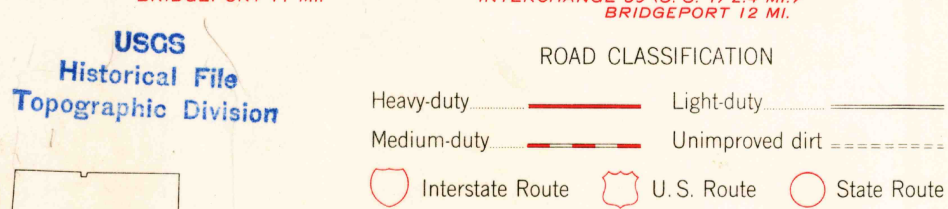
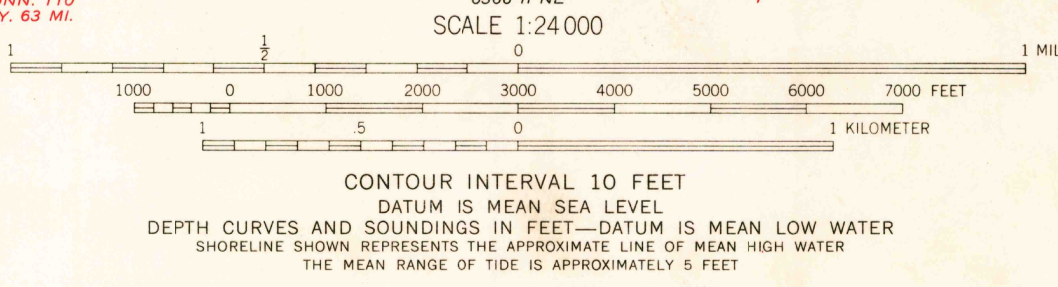
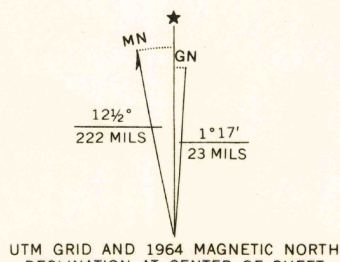
STATE OF CONNECTICUT
HIGHWAY DEPARTMENT

ANSONIA QUADRANGLE
CONNECTICUT
7.5 MINUTE SERIES (TOPOGRAPHIC)

6366 I SE-
MOUNT CARMEL



Mapped, edited, and published by the Geological Survey
Control by USGS, USC&GS, and Connecticut Geodetic Survey
Topography by photogrammetric methods from aerial photographs
taken 1949. Field checked 1953. Revised from aerial
photographs taken 1963. Field checked 1964.
Selected hydrographic data compiled from USC&GS Chart 219 (1964)
This information is not intended for navigational purposes
Polyconic projection. 1927 North American datum
10,000-foot grid based on Connecticut coordinate system
1000-meter Universal Transverse Mercator grid ticks,
zone 18, shown in blue
Fine red dashed lines indicate selected fence and field lines where
generally visible on aerial photographs. This information is unchecked
Red tint indicates areas in which only landmark buildings are shown



U.S.G.S.
FILE COPY
TOPOGRAPHIC DIVISION
ANSONIA, CONN.
N4115—W7300/7.5
1964
AMS 6366 I SE—SERIES V816

MAY 19 1967
5130
REV.