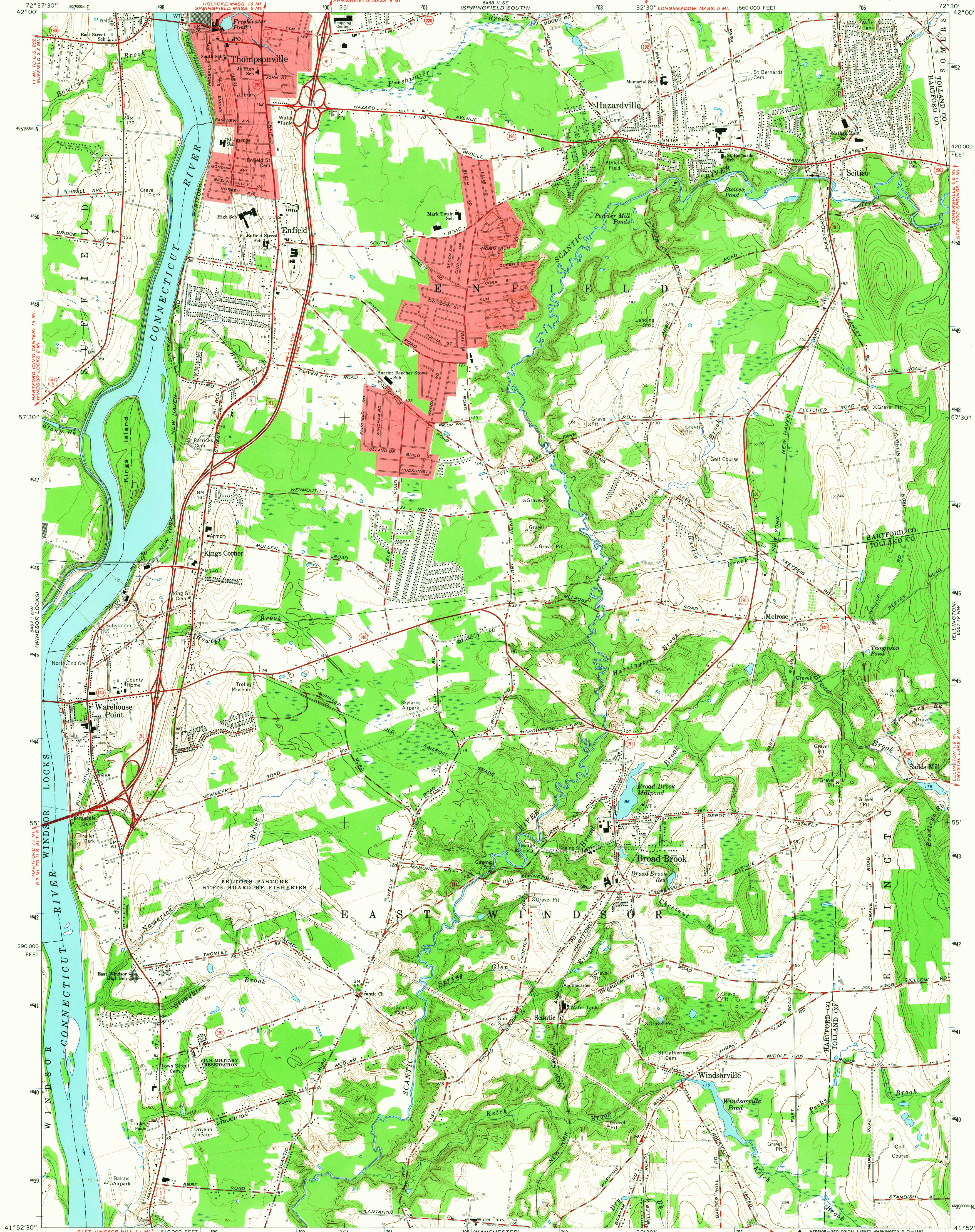
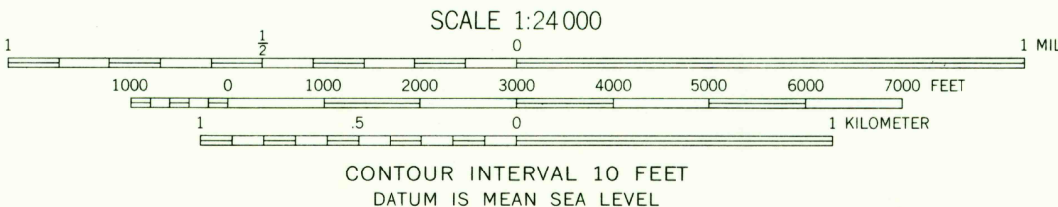
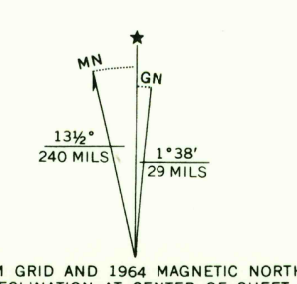


UNITED STATES  
DEPARTMENT OF THE INTERIOR  
GEOLOGICAL SURVEY

BROAD BROOK QUADRANGLE  
CONNECTICUT  
7.5 MINUTE SERIES (TOPOGRAPHIC)



Mapped, edited, and published by the Geological Survey  
Revised in cooperation with Connecticut Highway Department  
Control by USGS, USC&GS, and Connecticut Geodetic Survey  
Planimetry by photogrammetric methods from aerial photographs  
taken 1941. Topography by planimetric surveys 1942 and 1943  
Revised 1964  
Polyconic projection. 1927 North American datum  
10,000-foot grid based on Connecticut coordinate system  
1000-meter Universal Transverse Mercator grid ticks,  
zone 18, shown in blue  
Fine red dashed lines indicate selected fence and field lines where  
generally visible on aerial photographs. This information is unchecked  
Red tint indicates areas in which only landmark buildings are shown



ROAD CLASSIFICATION

Heavy-duty	Light-duty
Medium-duty	Unimproved dirt
Interstate Route	U.S. Route
	State Route

BROAD BROOK, CONN.  
N4152.5—W7230.7.5

AMS 6467 1 NE—SERIES V816

OCT 26 1965  
4985  
U.S.G.S.  
FILE COPY  
TOPOGRAPHIC DIVISION