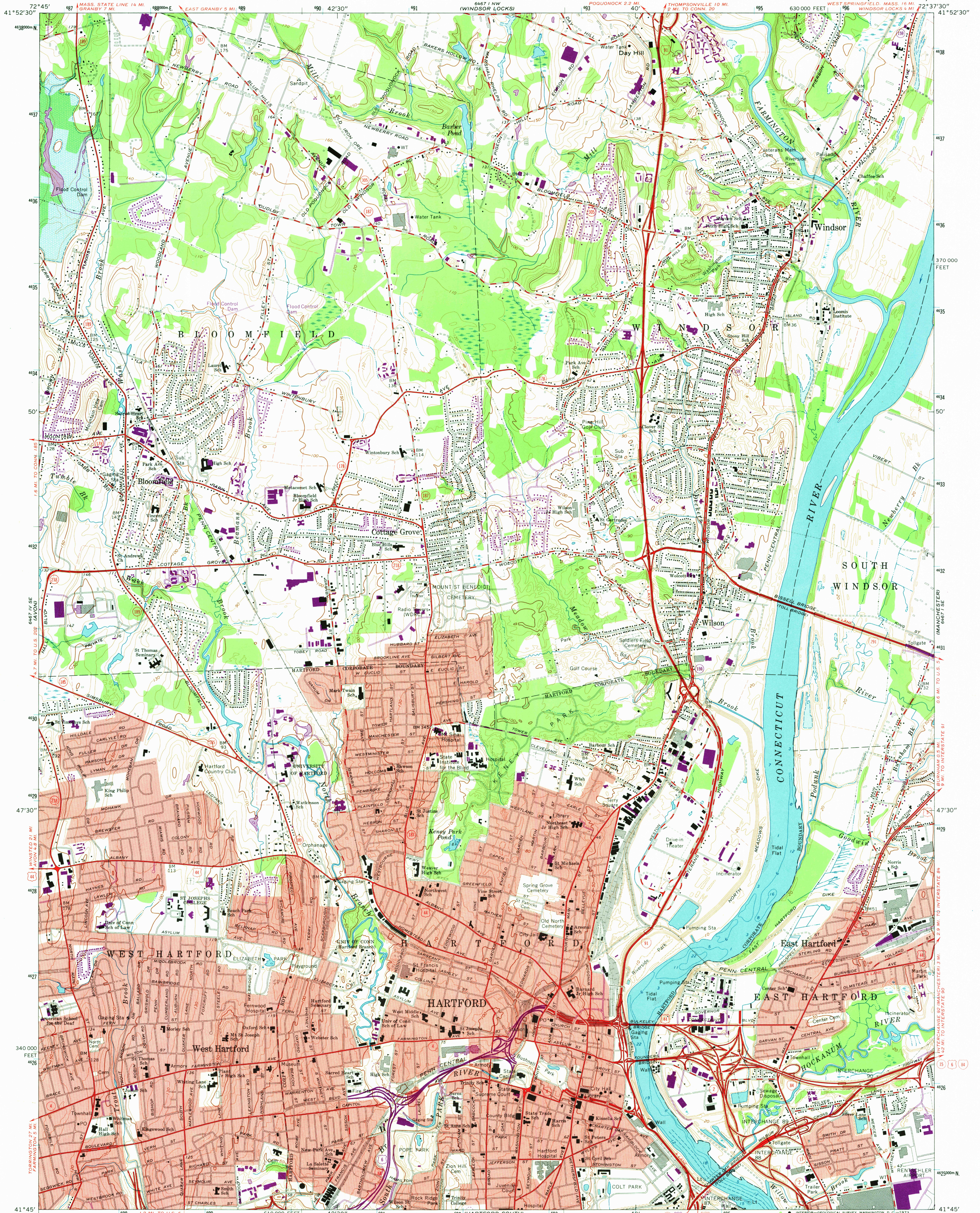
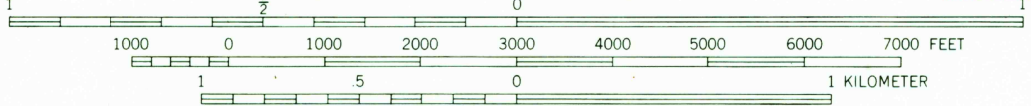
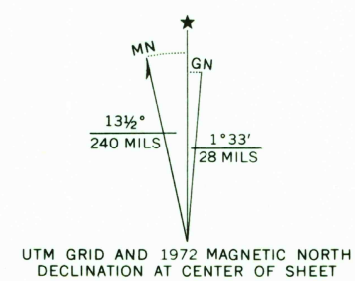


UNITED STATES  
DEPARTMENT OF THE INTERIOR  
GEOLOGICAL SURVEY

HARTFORD NORTH QUADRANGLE  
CONNECTICUT—HARTFORD CO.  
7.5 MINUTE SERIES (TOPOGRAPHIC)

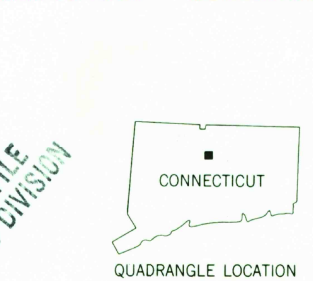


Maped by the Geological Survey and City of Hartford  
Edited and published by the Geological Survey  
Revised in cooperation with Connecticut Highway Department  
Control by USGS, USC&GS, and Connecticut Geodetic Survey  
Planimetry by photogrammetric methods from aerial photographs  
taken 1941. Topography by planimetric surveys 1943. Revised 1964  
Selected hydrographic data compiled from USC&GS Chart 267 (1962)  
This information is not intended for navigational purposes  
Polyconic projection. 1927 North American datum  
10,000-foot grid based on Connecticut coordinate system  
1000-meter Universal Transverse Mercator grid ticks,  
zone 18, shown in blue  
Fine red dashed lines indicate selected fence and field lines where  
generally visible on aerial photographs. This information is unchecked  
Red tint indicates areas in which only landmark buildings are shown  
Area covered by dashed light-blue pattern is subject  
to controlled inundation



CONTOUR INTERVAL 10 FEET  
DATUM IS MEAN SEA LEVEL  
DEPTH CURVES AND SOUNDINGS IN FEET—DATUM IS MEAN LOW WATER  
SHORELINE SHOWN REPRESENTS THE APPROXIMATE LINE OF MEAN HIGH WATER  
THE MEAN RANGE OF TIDE IS APPROXIMATELY 1.7 FEET

FOR SALE BY U.S. GEOLOGICAL SURVEY, WASHINGTON, D. C. 20242  
A FOLDER DESCRIBING TOPOGRAPHIC MAPS AND SYMBOLS IS AVAILABLE ON REQUEST



ROAD CLASSIFICATION  
Heavy-duty ——— Light-duty ———  
Medium-duty ——— Unimproved dirt ———  
Interstate Route ——— U.S. Route ——— State Route ———

HARTFORD NORTH, CONN.  
N4145—W7237.5/7.5

1964  
PHOTOREVISED 1972  
AMS 6467 I SW—SERIES V816

Revisions shown in purple compiled in cooperation with  
Connecticut Highway Department from aerial photographs  
taken 1972. This information not field checked