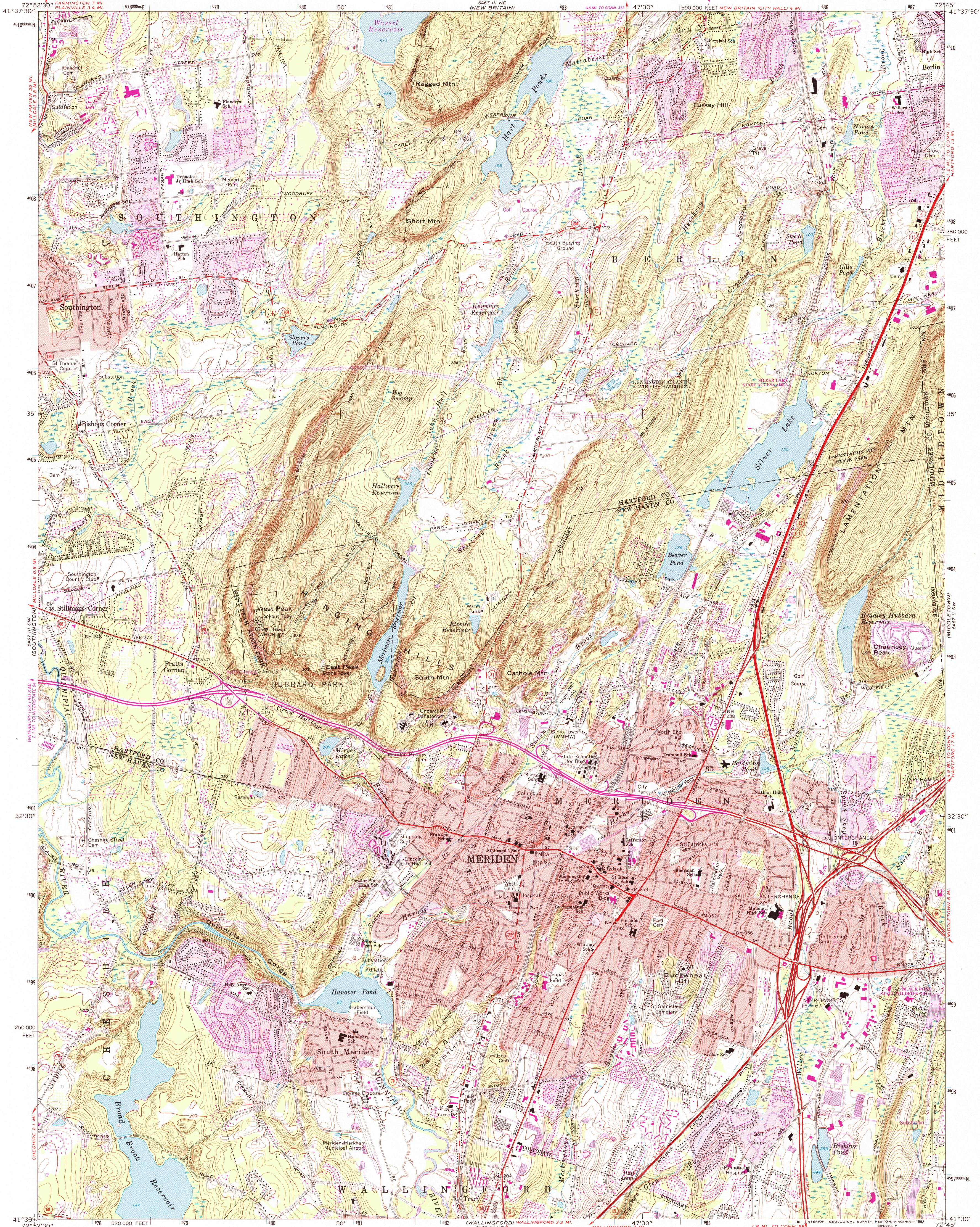
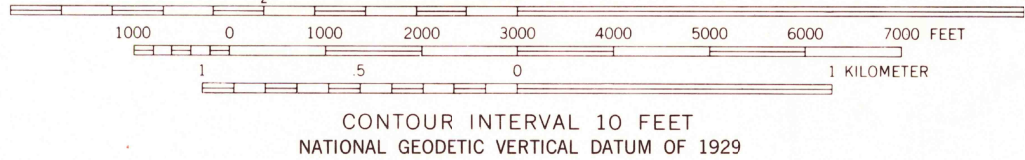
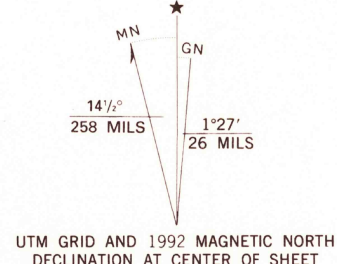


UNITED STATES  
DEPARTMENT OF THE INTERIOR  
GEOLOGICAL SURVEY

MERIDEN QUADRANGLE  
CONNECTICUT  
7.5 MINUTE SERIES (TOPOGRAPHIC)



Mapped, edited, and published by the Geological Survey  
Revised in cooperation with Connecticut Highway Department  
Control by USGS, NOS/NOAA, and Connecticut Geodetic Survey  
Topography by plane-table surveys 1943-1944. Revised from  
aerial photographs taken 1966. Field checked 1967  
Polyconic projection. 10,000-foot grid ticks based on  
Connecticut coordinate system  
1000-meter Universal Transverse Mercator grid ticks,  
zone 18, shown in blue  
1927 North American Datum  
To place on the predicted North American Datum 1983  
move the projection lines 5 meters south and  
38 meters west as shown by dashed corner ticks  
Fine red dashed lines indicate selected fence and field lines where  
generally visible on aerial photographs. This information is unchecked  
Red tint indicates areas in which only landmark buildings are shown  
There may be private inholdings within the boundaries of  
the National or State reservations shown on this map



THIS MAP COMPLIES WITH NATIONAL MAP ACCURACY STANDARDS  
FOR SALE BY U.S. GEOLOGICAL SURVEY  
DENVER, COLORADO 80225, OR RESTON, VIRGINIA 22092  
A FOLDER DESCRIBING TOPOGRAPHIC MAPS AND SYMBOLS IS AVAILABLE ON REQUEST

Revisions shown in purple and woodland compiled  
from aerial photographs taken 1991 and other sources  
Contours not revised. This information not field checked  
Map edited 1992  
Purple tint indicates extension of urban areas



ROAD CLASSIFICATION  
Primary highway, all weather, improved surface  
Secondary highway, all weather, hard surface  
Light-duty road, all weather, improved surface  
Unimproved road, fair or dry weather  
Interstate Route  
U. S. Route  
State Route

MERIDEN, CONN.  
41072-E7-TF-024

1967  
REVISED 1992  
DMA 6467 III SE-SERIES V816

