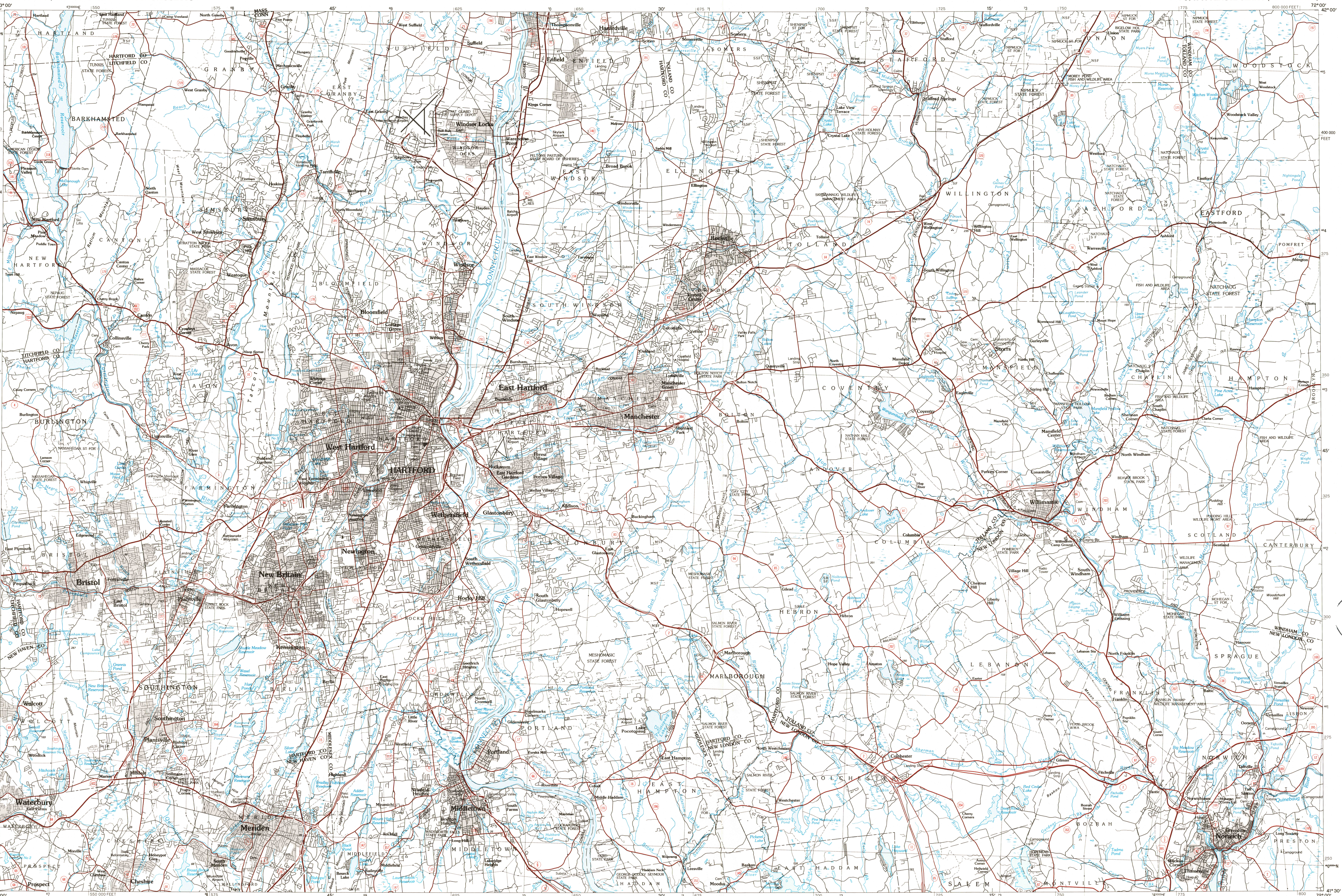


HARTFORD, CONNECTICUT-MASSACHUSETTS

30 X 60 MINUTE SERIES (PLANIMETRIC)

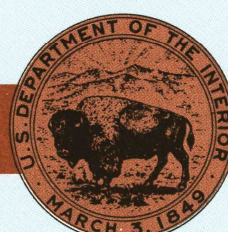


Hartford

CONNECTICUT-MASSACHUSETTS

1:100 000-scale
planimetric map30 X 60 MINUTE QUADRANGLE
SHOWING

- Elevations in meters
- Highways, roads and other manmade structures
- Water features
- Geographic names



GEOLOGICAL SURVEY

1986

Produced by the United States Geological Survey

Compiled from USGS 1:24 000-scale topographic maps dated 1953-1984. Planimetry revised from aerial photographs taken 1979 and other source data. Revised information not field checked. Map edited 1986.

Projection and 10 000-meter grid, zone 18.

Universal Transverse Mercator

25 000-foot grid ticks based on Connecticut coordinate system

1922 North American Datum

To place on the predicted North American Datum 1983, move the projection lines 5 meters south and 38 meters west

There may be private inholdings within the boundaries of the National or State reservations shown on this map

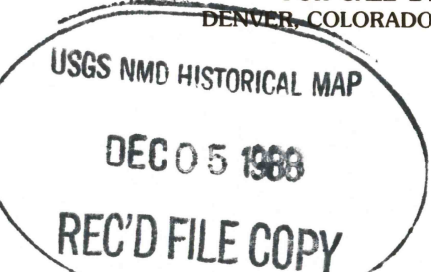
NATIONAL GEODETIC VERTICAL DATUM OF 1929

ELEVATIONS SHOWN TO THE NEAREST METER

THIS MAP COMPLIES WITH NATIONAL MAP ACCURACY STANDARDS

CONVERSION TABLE		DECLINATION DIAGRAM		ADJOINING MAPS		
Meters	Feet			1	2	3
1	3.2808			1	2	3
2	6.5617			4	5	6
3	9.8425			7	8	9
4	13.1234			10	11	12
5	16.4042			13	14	15
6	19.6850			16	17	18
7	22.9659			19	20	21
8	26.2467			22	23	24
9	29.5276			25	26	27
10	32.8084			28	29	30

To convert meters to feet multiply by 3.2808
To convert feet to meters multiply by 0.3048

FOR SALE BY U.S. GEOLOGICAL SURVEY
DENVER, COLORADO 80225, OR RESTON, VIRGINIA 22092

Topographic Map Symbols

Primary highway, hard surface.	Secondary highway, hard surface.	Light duty road, principal street, hard or improved surface.	Other road or street; trail.	Route marker: Interstate U.S. State.	Railroad: standard gage, narrow gage.	Bridge: overpass; underpass.	Tunnel: road; railroad.	Built up area; locality; elevation.	Airport; landing field; landing strip.	National boundary.	State boundary.	County boundary.	National or State reservation boundary.	Land grant boundary.	U.S. public lands survey: range, township, section.	Range, township, section: unextracted.	Power transmission line; pipeline.	Dam; dam with lock.	Cemetery; building.	Windmill; water well; spring.	Mine shaft; adit or cave; mine, quarry; gravel pit.	Campground; picnic area; U.S. location monument.	Runes, cliff dwelling.	Distorted surface: strip mine, lava; sand.	Contours: index; intermediate; supplementary.	Bathymetric contours: index; intermediate.	Stream, lake: perennial; intermittent.	Reefs, large and small; lake, large and small.	Area to be submerged; marsh, swamp.	Land subject to controlled inundation; woodland.	Scrub; mangrove.	Orchard; vineyard.
--------------------------------	----------------------------------	--	------------------------------	--------------------------------------	---------------------------------------	------------------------------	-------------------------	-------------------------------------	--	--------------------	-----------------	------------------	---	----------------------	---	--	------------------------------------	---------------------	---------------------	-------------------------------	---	--	------------------------	--	---	--	--	--	-------------------------------------	--	------------------	--------------------

A pamphlet describing topographic maps is available on request