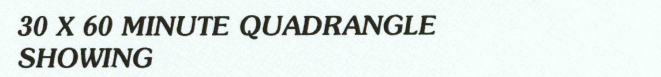


1:100 000-scale *metric*
topographic map



- Contours and elevations in meters
- Highways, roads and other manmade structures
- Water features
- Woodland areas
- Geographic names



1994

Produced by the United States Geological Survey
Compiled from USGS 1:24 000-scale topographic maps dated 1953-1984. Planimetry revised from aerial photographs taken 1989 and other source data. Revised information not field checked. Map edited 1994
North American Datum of 1927 (NAD 27). Projection and 10 000-meter grid: Universal Transverse Mercator, zone 18 25 000-foot ticks: Connecticut coordinate system.
The values of the shift between NAD 27 and North American Datum of 1983 (NAD 83) for 7.5-minute intersections are obtainable from National Geographic Survey NADCON software
There may be private inholdings within the boundaries of the National or State reservations shown on this map

CONTOUR INTERVAL 10 METERS
NATIONAL GEODETIC VERTICAL DATUM OF 1929
ELEVATIONS SHOWN TO THE NEAREST METER

THIS MAP COMPLIES WITH NATIONAL MAP ACCURACY STANDARDS
FOR SALE BY U.S. GEOLOGICAL SURVEY
DENVER, COLORADO 80225, OR RESTON, VIRGINIA 22092

CONVERSION TABLE	
Meters	Feet
1	3.2808
2	6.5617
3	9.8425
4	13.1234
5	16.4042
6	19.6850
7	22.9659
8	26.2467
9	29.5276
10	32.8084

UTM grid convergence (GN) and Adams magnetic declination (MN) at center of map. Diagram is approximate

ADJOINING MAPS		
1	2	3
4	5	
6	7	8

1 Pittsfield
2 Holyoke
3 Boston
4 Waterbury
5 Providence
6 Bridgeport
7 New Haven
8 Black Island

ISBN 0-607-13449-1

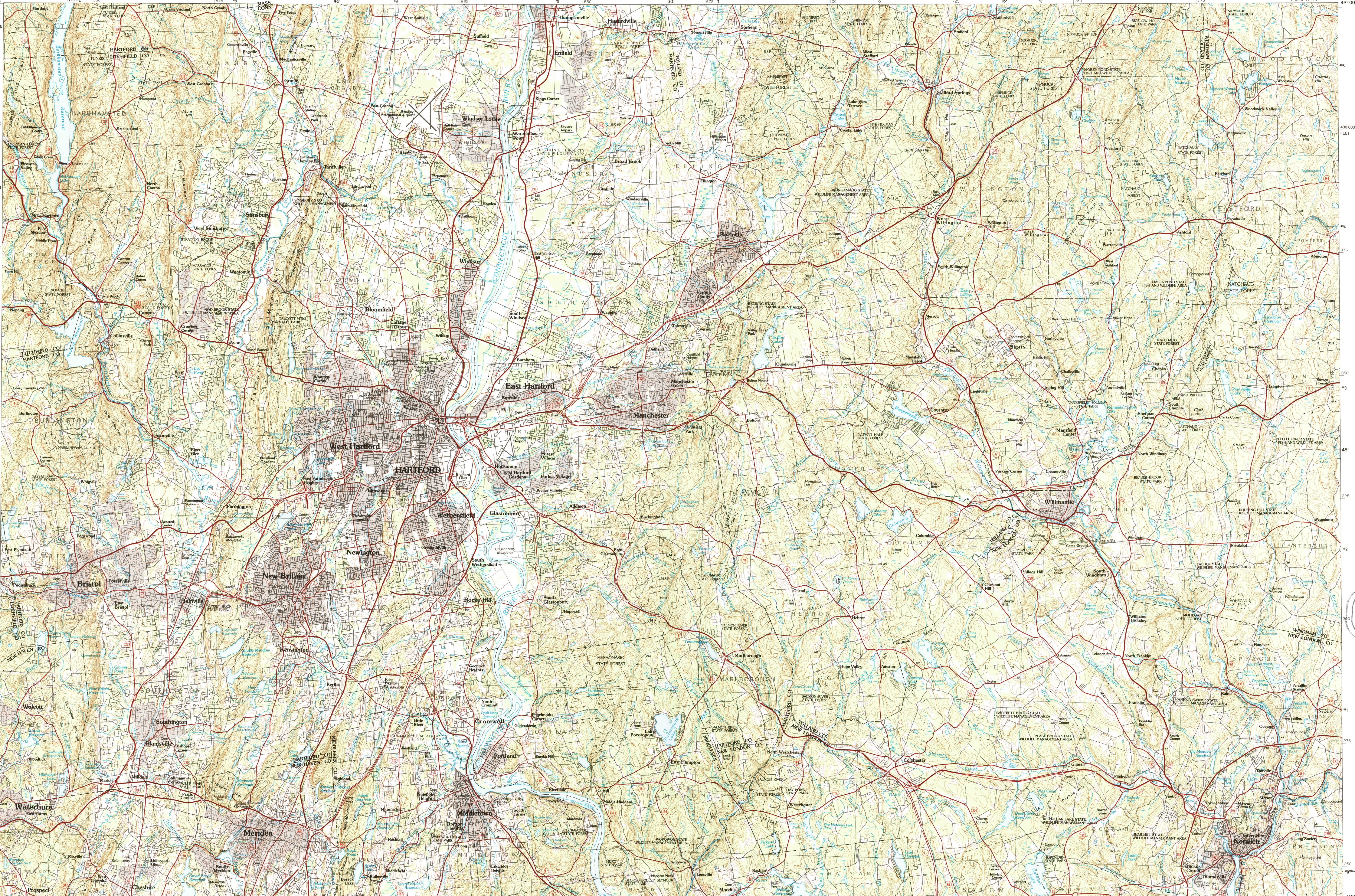


USGS AND HISTORICAL
NAP ARCHIVES
SEP 26 1996
REC'D FILE COPY

Topographic Map Symbols

Primary highway, hard surface	
Secondary highway, hard surface	
Light duty road, principal street, hard or improved surface	
Other street or street, trail	
Road marker	
Interstate, U.S. State	
Railroad: standard gage, narrow gage	
Bridge; overpass; underpass	
Tunnel: road, railroad	
Built up area; locality, elevation	
Runway, landing field, landing strip	
National boundary	
State boundary	
County boundary	
Civil township boundary	
National or State reservation boundary	
Land grant boundary	
U.S. public lands survey: range, township, section	
Range, township, section line: protracted	
Power transmission line: pipeline	
Dam, dam with lock	
Cemetery, building	
Windmill, water wheel; spring	
Mine shaft; old or cave, mine, quarry; gravel pit	
Campground, picnic area; U.S. location monument	
Ruins, cliff overhang	
Distorted surface: strip mine, lava, sand	
Cave, sink, mire; intermittent; supplementary	
Bathymetric contours: index, intermediate	
Stream, lake; perennial, intermittent	
Rapids, large and small; falls, large and small	
Area to be submerged, marsh, swamp	
Land subject to controlled inundation, woodland	
Scrub, mangrove	
Orchard, vineyard	

A pamphlet describing topographic maps is available on request.



INTERIOR—GEOLOGICAL SURVEY, RESTON, VIRGINIA—1925

SCALE 1:100 000

1 CENTIMETER ON THE MAP REPRESENTS 1 KILOMETER ON THE GROUND

CONTOUR INTERVAL 10 METERS

0 5000 10000 15000 20000 METERS

0 10000 20000 30000 40000 50000 60000 70000 FEET

HARTFORD, CONNECTICUT-MASSACHUSETTS

41072-E1-TM-100