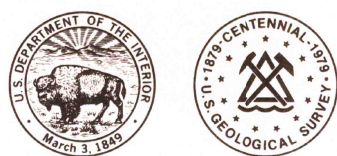
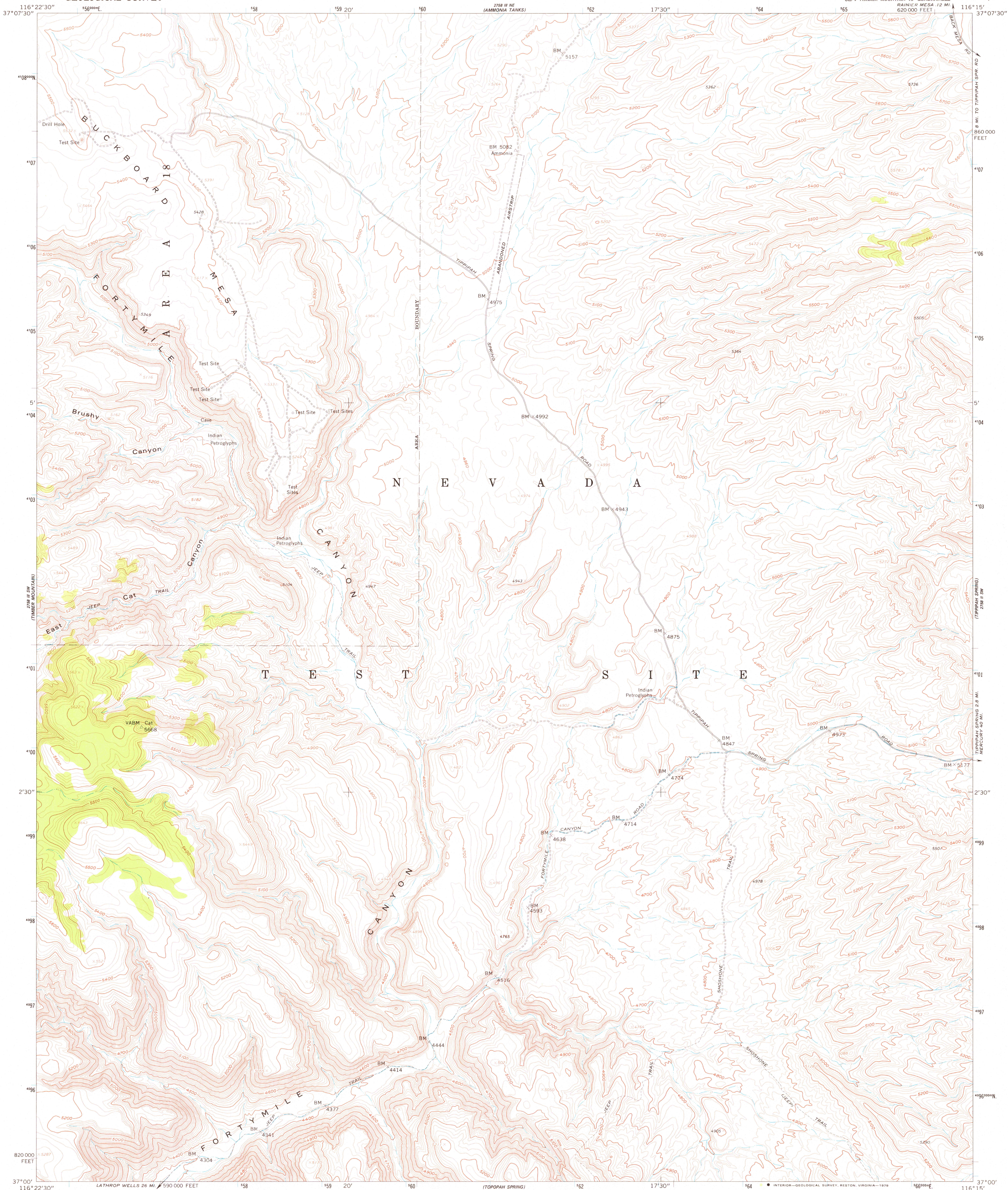


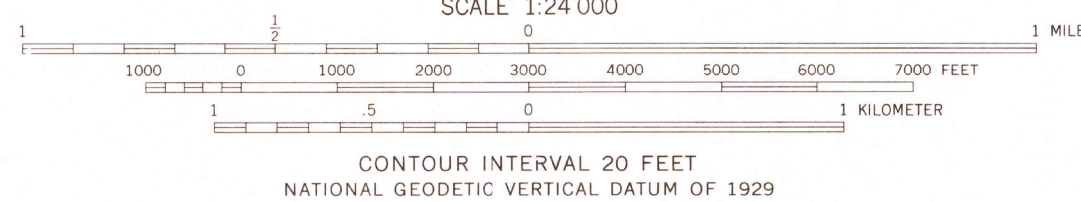
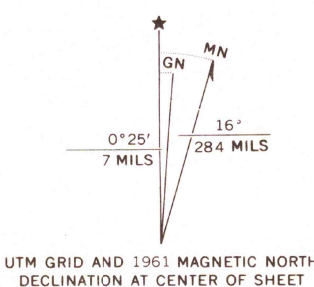
UNITED STATES
DEPARTMENT OF THE INTERIOR
GEOLOGICAL SURVEY



BUCKBOARD MESA QUADRANGLE
NEVADA-NYE CO.
7.5 MINUTE SERIES (TOPOGRAPHIC)



Mapped, edited, and published by the Geological Survey
in cooperation with the Atomic Energy Commission
Control by USGS, USC&GS, and Atomic Energy Commission
Topography from aerial photographs by photogrammetric methods
Aerial photographs taken 1959. Field check 1961
Polyconic projection. 1927 North American datum
10,000-foot grid based on Nevada coordinate system, central zone
1000-meter Universal Transverse Mercator grid ticks,
zone 11, shown in blue



ROAD CLASSIFICATION
Light duty ————— Unimproved dirt - - - - -

USGS
Historical File
Topographic Division

BUCKBOARD MESA, NEV
SE/4 TIMBER MOUNTAIN 15' QUADRANGLE
N3700-W11615/7.5

1961

AMS 2758 III SE—SERIES V896

THIS MAP COMPLIES WITH NATIONAL MAP ACCURACY STANDARDS
FOR SALE BY U. S. GEOLOGICAL SURVEY, DENVER, COLORADO 80225, OR RESTON, VIRGINIA 22092
A FOLDER DESCRIBING TOPOGRAPHIC MAPS AND SYMBOLS IS AVAILABLE ON REQUEST

MAR 19 1978

2500