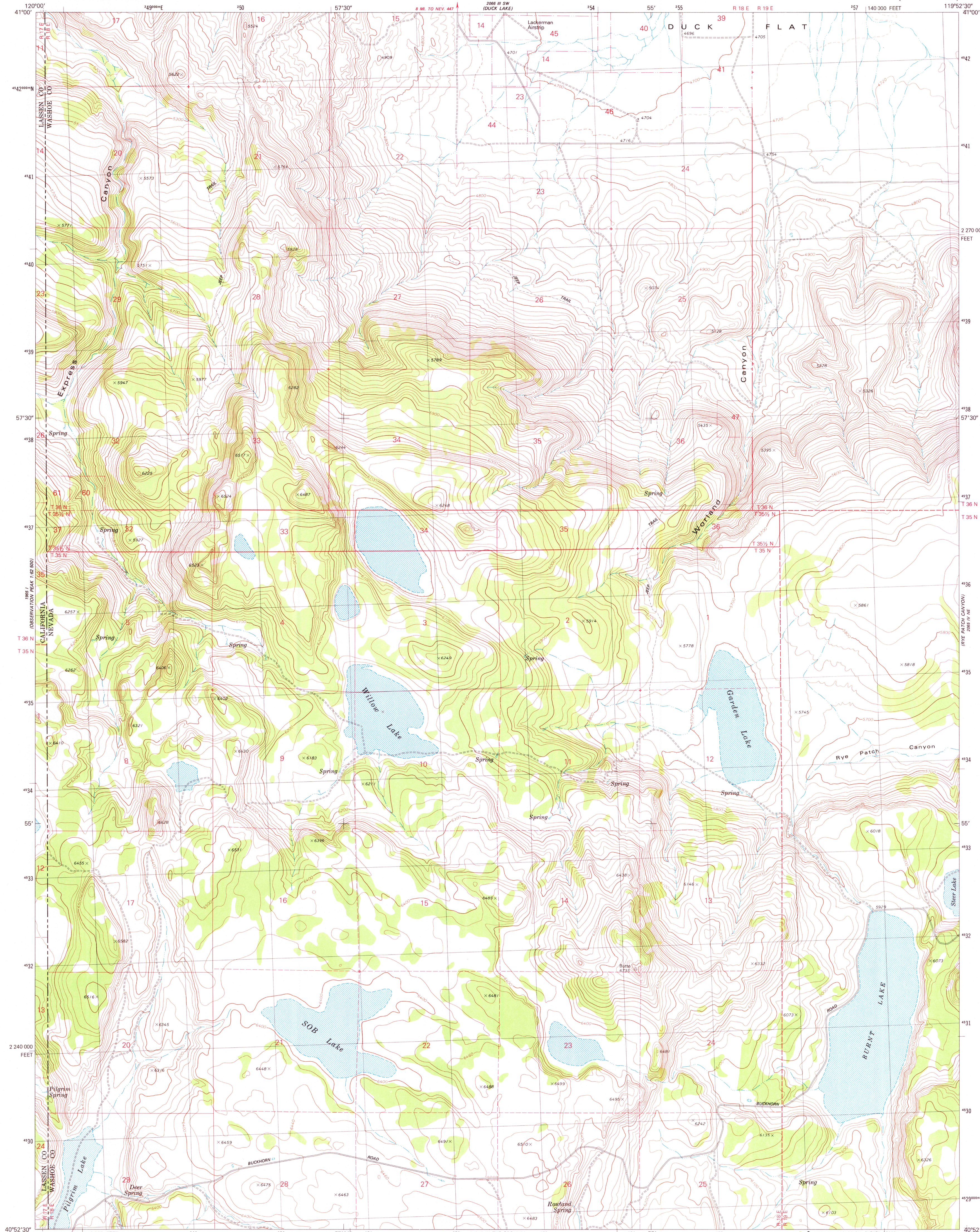


UNITED STATES
DEPARTMENT OF THE INTERIOR
GEOLOGICAL SURVEY

BURNT LAKE QUADRANGLE
NEVADA-CALIFORNIA
7.5 MINUTE SERIES (TOPOGRAPHIC)



Mapped, edited, and published by the Geological Survey

Control by USGS and NOS/NOAA and U.S. Forest Service

Topography by photogrammetric methods from aerial photographs taken 1974. Field checked 1975

Map edited 1980

Projection and 10,000-foot grid ticks: Nevada coordinate system, west zone (transverse Mercator)

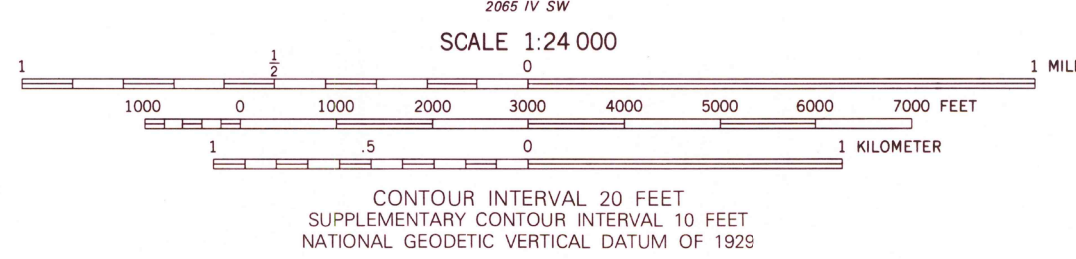
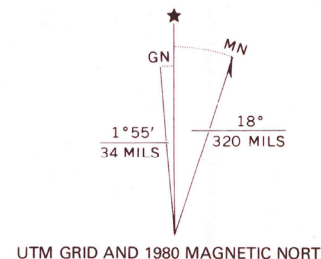
1000-meter Universal Transverse Mercator grid, zone 11

1927 North American Datum

To place on the predicted North American Datum 1983 move the projection lines 16 meters north and 87 meters east as shown by dashed corner ticks

Fine red dashed lines indicate selected fence and field lines where generally visible on aerial photographs. This information is unchecked

Where omitted, land lines have not been established or are not shown because of insufficient data



ROAD CLASSIFICATION

Primary highway, hard surface	Light-duty road, hard or improved surface
Secondary highway, hard surface	Unimproved road
Interstate Route	U.S. Route
State Route	

NOV - 5 1980

BURNT LAKE, NEV.-CALIF. 2900

N4052.5-W11952.5/7.5

1980

DMA 2085 IV NW-SERIES V896