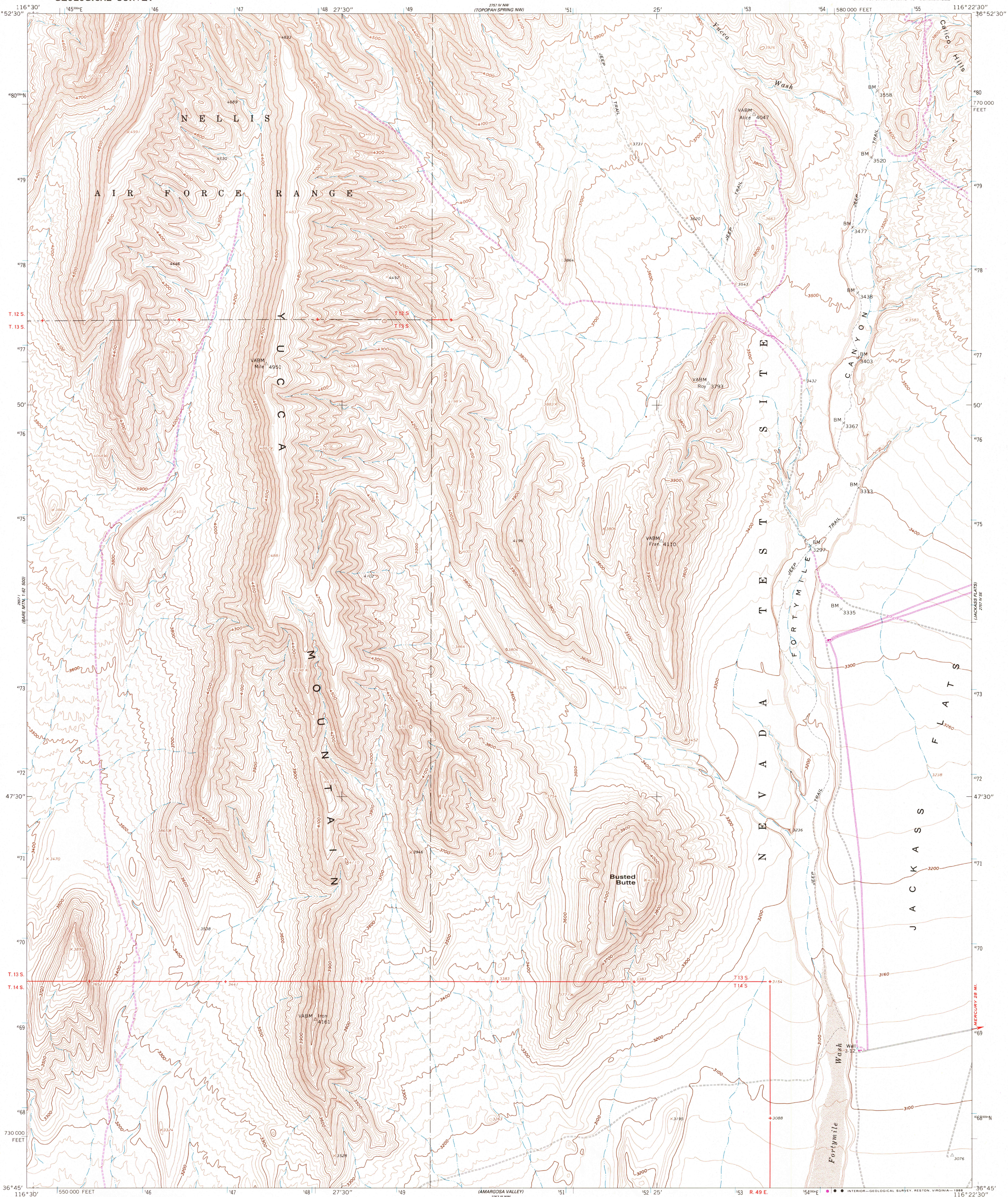


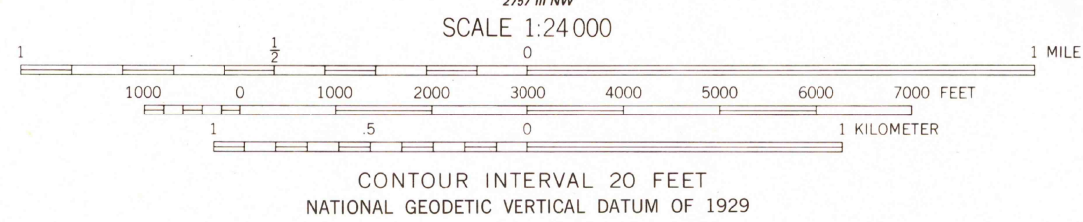
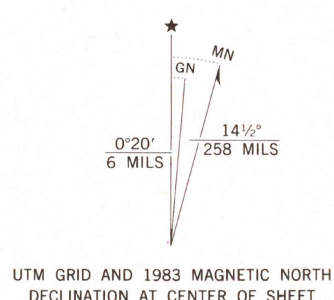
UNITED STATES
DEPARTMENT OF THE INTERIOR
GEOLOGICAL SURVEY

BUSTED BUTTE QUADRANGLE
NEVADA-NYE CO.
7.5 MINUTE SERIES (TOPOGRAPHIC)
SW/4 TOPOPAH SPRING 15' QUADRANGLE



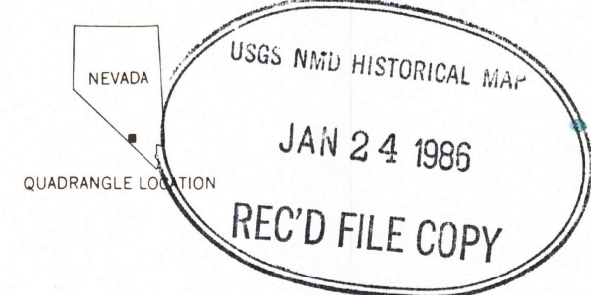
Mapped, edited, and published by the Geological Survey
in cooperation with the Atomic Energy Commission
Control by USGS, NOS/NOAA, and Atomic Energy Commission
Topography by photogrammetric methods from aerial
photographs taken 1959. Field checked 1961
Polyconic projection. 10,000-foot grid ticks based on
Nevada coordinate system, central zone
1000-meter Universal Transverse Mercator grid ticks,
zone 11, shown in blue
1927 North American Datum
To place on the predicted North American Datum 1983
move the projection lines 8 meters north and
78 meters east as shown by dashed corner ticks
There may be private inholdings within the boundaries of
the National or State reservations shown on this map

Revisions shown in purple and woodland compiled from aerial
photographs taken 1960 and other sources. This information
not field checked. Map edited 1983



THIS MAP COMPLIES WITH NATIONAL MAP ACCURACY STANDARDS
FOR SALE BY U. S. GEOLOGICAL SURVEY, DENVER, COLORADO 80225, OR RESTON, VIRGINIA 22092
A FOLDER DESCRIBING TOPOGRAPHIC MAPS AND SYMBOLS IS AVAILABLE ON REQUEST

ROAD CLASSIFICATION
Light-duty ————— Unimproved dirt - - - - -



BUSTED BUTTE, NEV.
(FORMERLY TOPOPAH SPRING SW)
SW/4 TOPOPAH SPRING 15' QUADRANGLE
36116-04-TF-024

1961
PHOTOREVISED 1983
DMA 2757 IV SW-SERIES V896