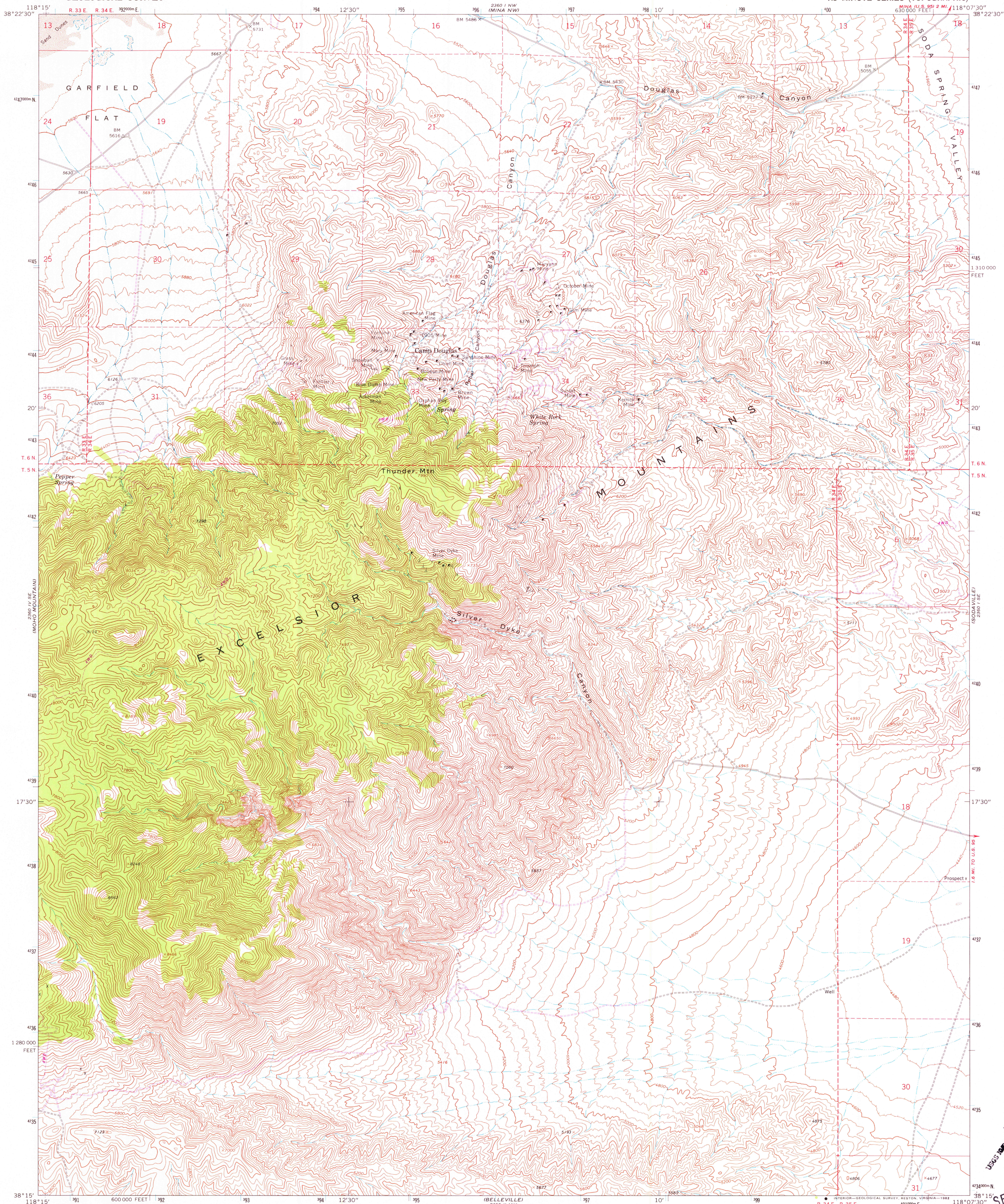
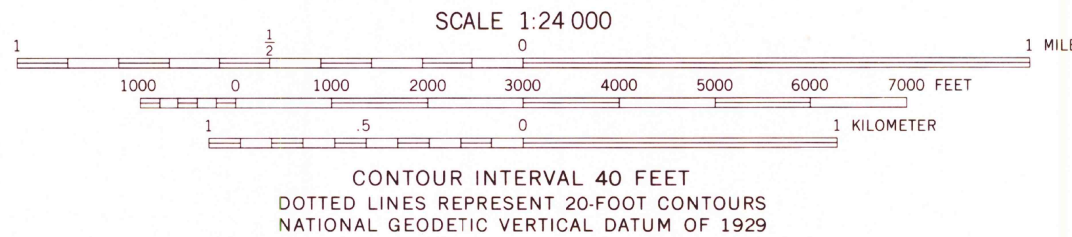
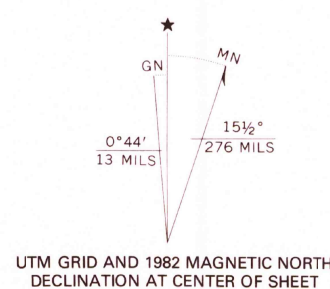


UNITED STATES
DEPARTMENT OF THE INTERIOR
GEOLOGICAL SURVEY

CAMP DOUGLAS QUADRANGLE
NEVADA—MINERAL CO.
7.5 MINUTE SERIES (TOPOGRAPHIC)



Maped, edited, and published by the Geological Survey
Control by USGS and NOS/NOAA
Topography by photogrammetric methods from aerial
photographs taken 1966. Field checked 1967
Polyconic projection. 1927 North American datum
10,000-foot grid based on Nevada coordinate system, west zone
1000-meter Universal Transverse Mercator grid ticks,
zone 11, shown in blue
To place on the predicted North American Datum 1983,
move the projection lines 11 meters north and
83 meters east as shown by dashed corner ticks
Certain land lines are omitted because of insufficient data



ROAD CLASSIFICATION
Light-duty ————— Unimproved dirt - - - - -

CAMP DOUGLAS, NEV.
N3815—W11807.5/7.5

1967
PHOTOREVISED 1982
DMA 2360 I SW—SERIES V896

THIS MAP COMPLIES WITH NATIONAL MAP ACCURACY STANDARDS
FOR SALE BY U. S. GEOLOGICAL SURVEY, DENVER, COLORADO 80225, OR RESTON, VIRGINIA 22092
A FOLDER DESCRIBING TOPOGRAPHIC MAPS AND SYMBOLS IS AVAILABLE ON REQUEST

Revisions shown in purple compiled from aerial photographs
taken 1980 and other source data. This information not
field checked. Map edited 1982

SEP 27 1982
U.S. GEOLOGICAL SURVEY
RESTON, VIRGINIA