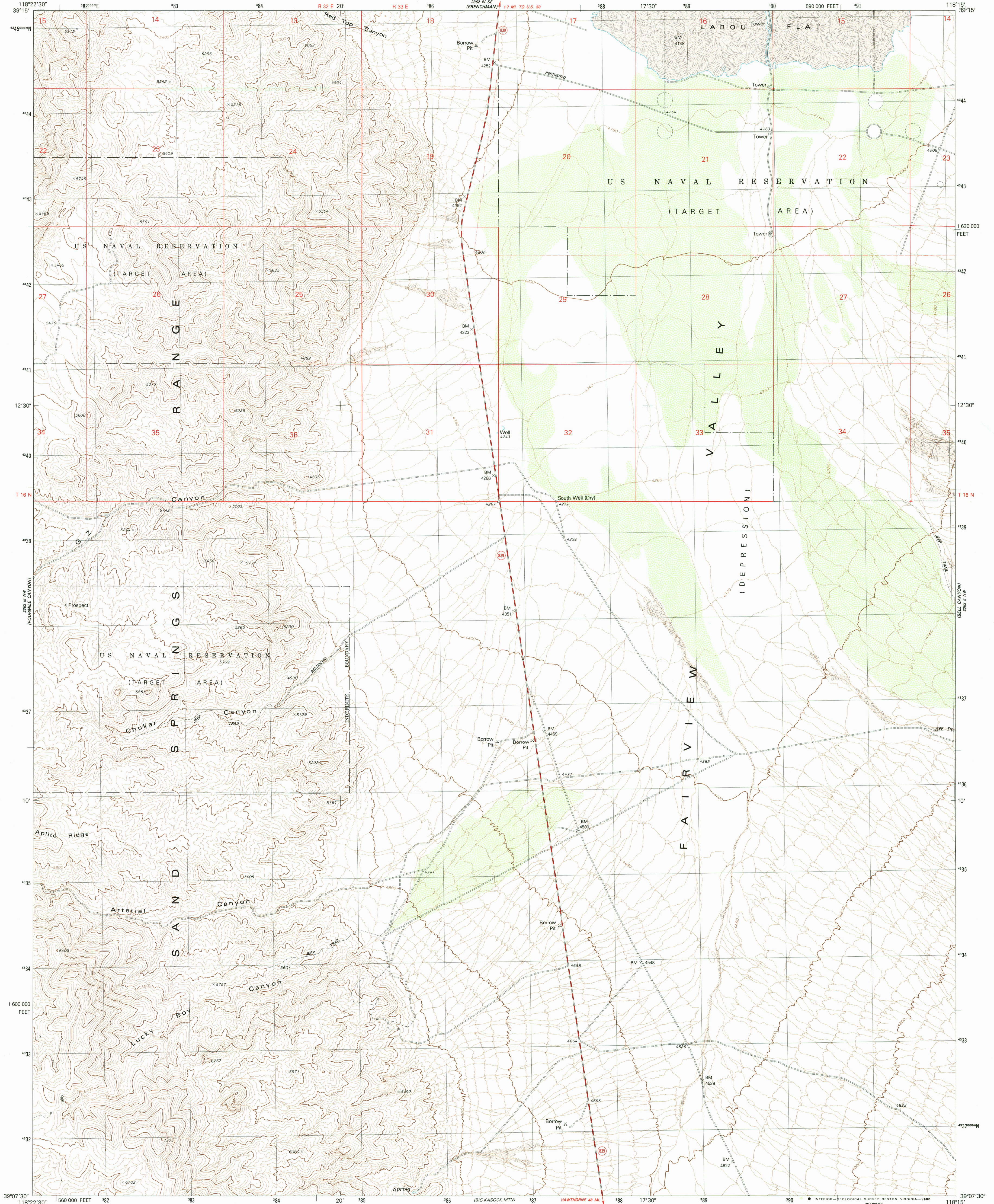
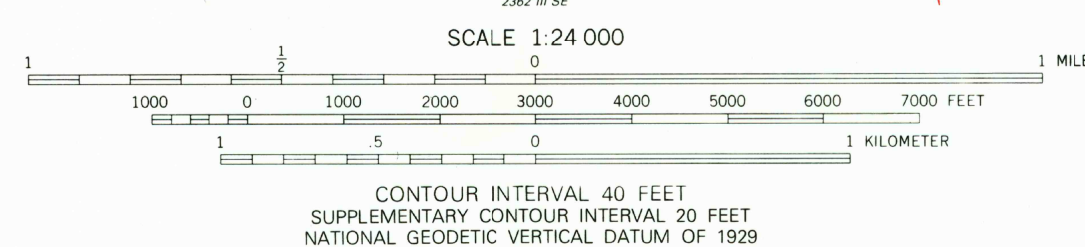
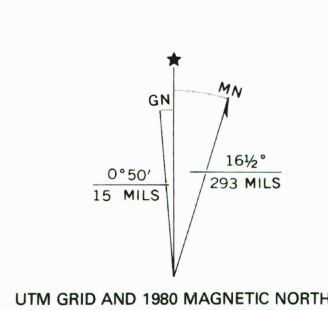


UNITED STATES
DEPARTMENT OF THE INTERIOR
GEOLOGICAL SURVEY

CHUKAR CANYON QUADRANGLE
NEVADA—CHURCHILL CO.
7.5 MINUTE SERIES (TOPOGRAPHIC)



Mapped, edited, and published by the Geological Survey
Control by USGS and NOS/NOAA
Topography by photogrammetric methods from aerial
photographs taken 1974. Field checked 1975. Map edited 1980
Projection and 10,000-foot grid ticks: Nevada coordinate
system, west zone (transverse Mercator)
1000-meter Universal Transverse Mercator grid, zone 11
1927 North American Datum
To place on the predicted North American Datum 1983
move the projection lines 13 meters north and
83 meters east as shown by dashed corner ticks
Fine red dashed lines indicate selected fence and field lines where
generally visible on aerial photographs. This information is unchecked
Where omitted, land lines have not been established
There may be private inholdings within the boundaries of
the National or State reservations shown on this map



THIS MAP COMPLIES WITH NATIONAL MAP ACCURACY STANDARDS
FOR SALE BY U.S. GEOLOGICAL SURVEY, DENVER, COLORADO 80225, OR RESTON, VIRGINIA 22092
A FOLDER DESCRIBING TOPOGRAPHIC MAPS AND SYMBOLS IS AVAILABLE ON REQUEST

ROAD CLASSIFICATION
Primary highway, hard surface. Light-duty road, hard or improved surface.
Secondary highway, hard surface. Unimproved road.
Interstate Route U.S. Route State Route

CHUKAR CANYON, NEV.
39118-B3-TF-024

1980
DMA 2362 III NE—SERIES V896

