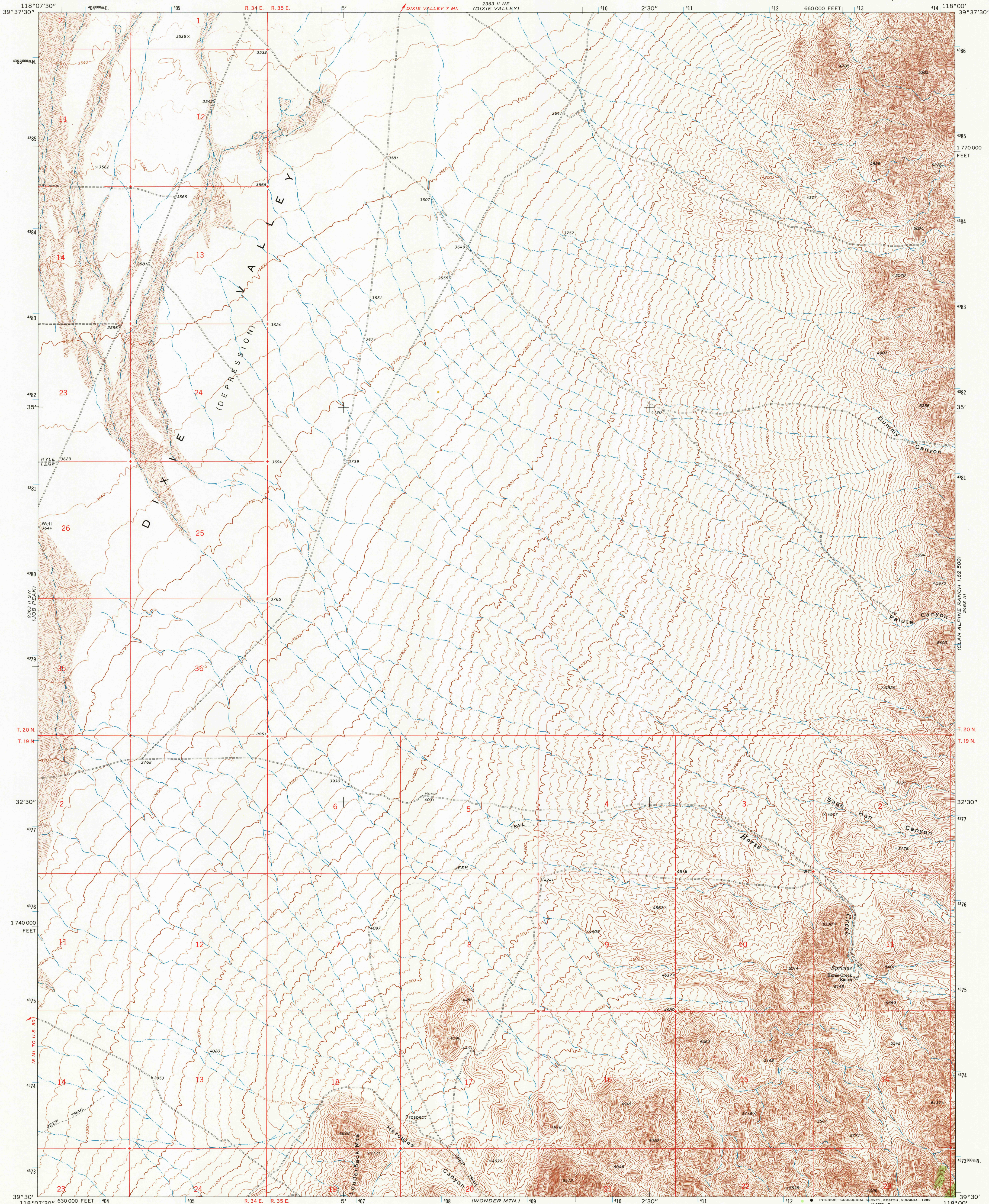
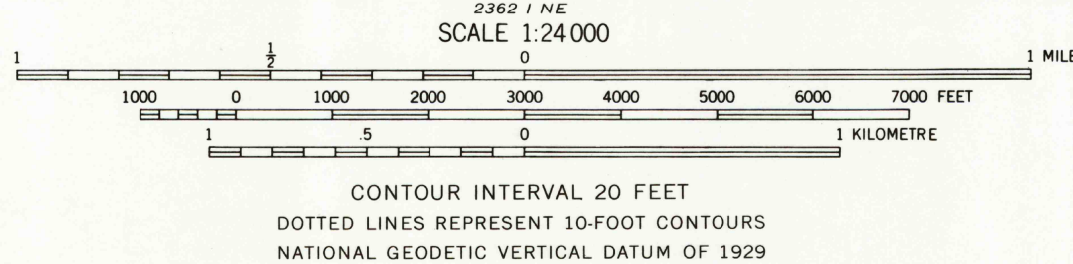
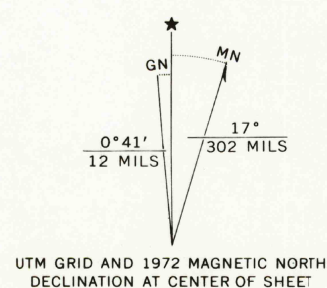


UNITED STATES  
DEPARTMENT OF THE INTERIOR  
GEOLOGICAL SURVEY

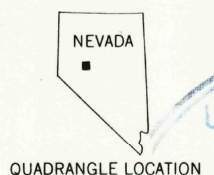
DIXIE VALLEY SE QUADRANGLE  
NEVADA—CHURCHILL CO.  
7.5 MINUTE SERIES (TOPOGRAPHIC)



Mapped, edited, and published by the Geological Survey  
Control by USGS and NOS/NOAA  
Topography by photogrammetric methods from aerial  
photographs taken 1971. Field checked 1972  
Projection and 10,000-foot grid ticks: Nevada coordinate  
system, west zone (transverse Mercator)  
1000-metre Universal Transverse Mercator grid ticks,  
zone 11, shown in blue. 1927 North American datum  
Where omitted, land lines have not been established  
Map photoinspected 1980  
No major culture or drainage changes observed



ROAD CLASSIFICATION	
Primary highway, hard surface	Light-duty road, hard or improved surface
Secondary highway, hard surface	Unimproved road
Interstate Route	U. S. Route
	State Route



USGS NHD HISTORICAL  
OCT 12 1990  
REC'D FILE COPY

DIXIE VALLEY SE, NEV.  
N3930—W11800/7.5  
1972  
PHOTOINSPECTED 1980  
AMS 2363 II SE—SERIES V896

THIS MAP COMPLIES WITH NATIONAL MAP ACCURACY STANDARDS  
FOR SALE BY U. S. GEOLOGICAL SURVEY, DENVER, COLORADO 80225, OR RESTON, VIRGINIA 22092  
A FOLDER DESCRIBING TOPOGRAPHIC MAPS AND SYMBOLS IS AVAILABLE ON REQUEST