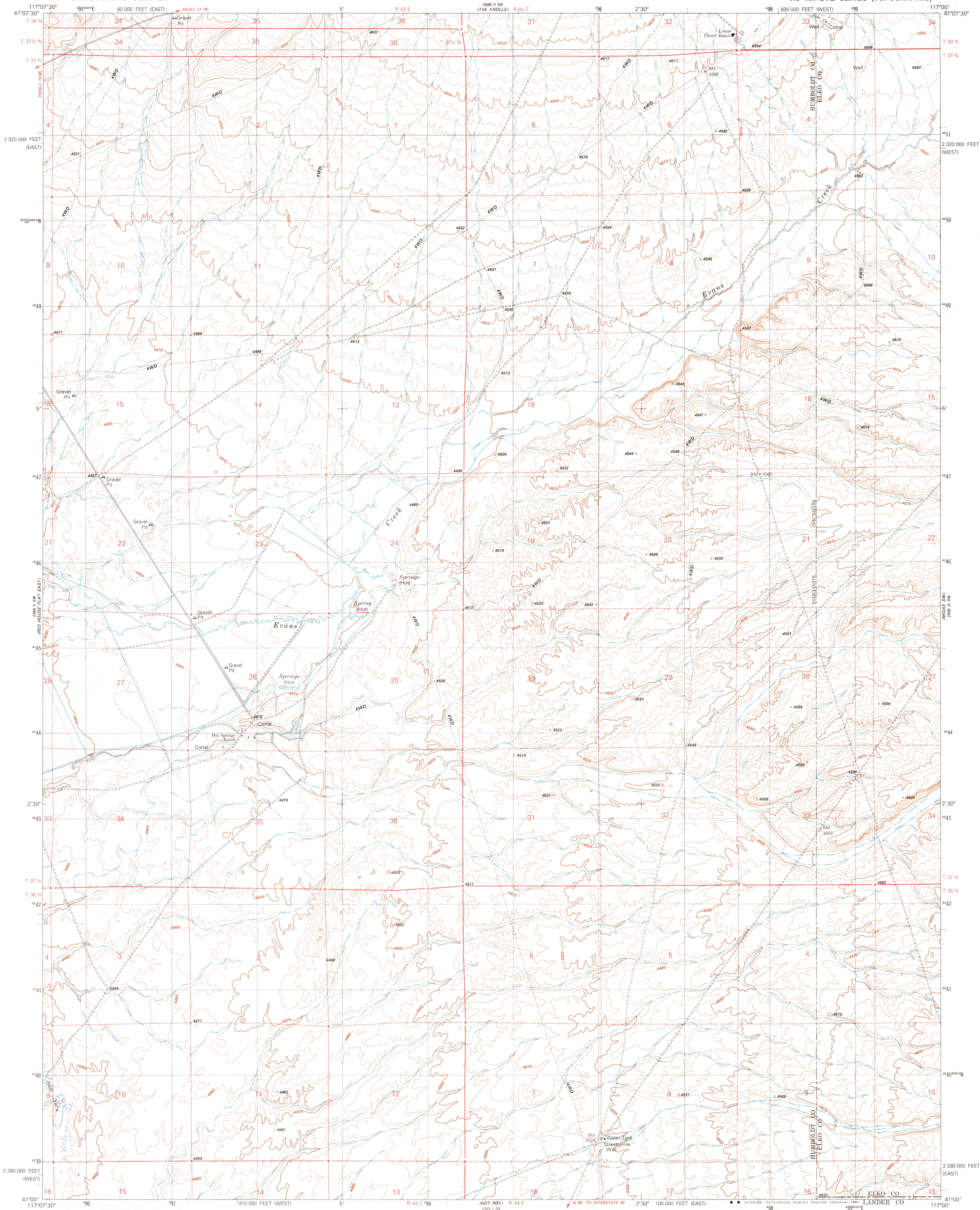


UNITED STATES  
DEPARTMENT OF THE INTERIOR  
GEOLOGICAL SURVEY

ELEVENMILE WELL QUADRANGLE  
NEVADA  
7.5 MINUTE SERIES (TOPOGRAPHIC)



Mapped, edited, and published by the Geological Survey

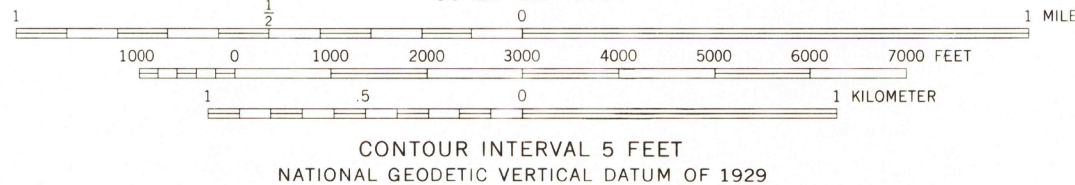
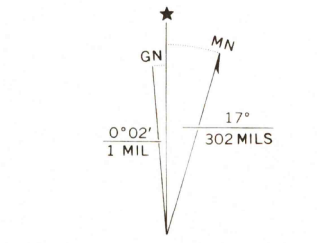
Control by USGS and NOS/NOAA

Topography by photogrammetric methods from aerial photographs taken 1974. Field checked 1975. Map edited 1980

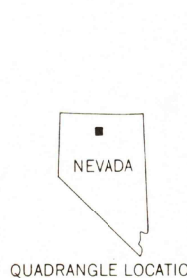
Polycyclic projection. 1927 North American Datum  
10,000-foot grid based on Nevada coordinate system,  
west and east zones

1000-meter Universal Transverse Mercator grid ticks, zone 11  
The difference between 1927 North American Datum and North  
American Datum of 1983 (NAD 83) for 7.5 minute intersections is  
given in USGS Bulletin 1875. The NAD 83 is shown by dashed  
corner ticks

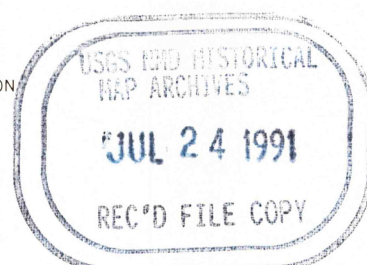
Fine red dashed lines indicate selected fence lines



THIS MAP COMPLIES WITH NATIONAL MAP ACCURACY STANDARDS  
FOR SALE BY U. S. GEOLOGICAL SURVEY, DENVER, COLORADO 80225, OR RESTON, VIRGINIA 22092  
A FOLDER DESCRIBING TOPOGRAPHIC MAPS AND SYMBOLS IS AVAILABLE ON REQUEST



ROAD CLASSIFICATION	
Primary highway, hard surface	Light-duty road, hard or improved surface
Secondary highway, hard surface	Unimproved road
Interstate Route	U. S. Route
	State Route



ELEVENMILE WELL, NEV.  
4117-A1-TF-024

1980

DMA 2566 II SE--SERIES Y896