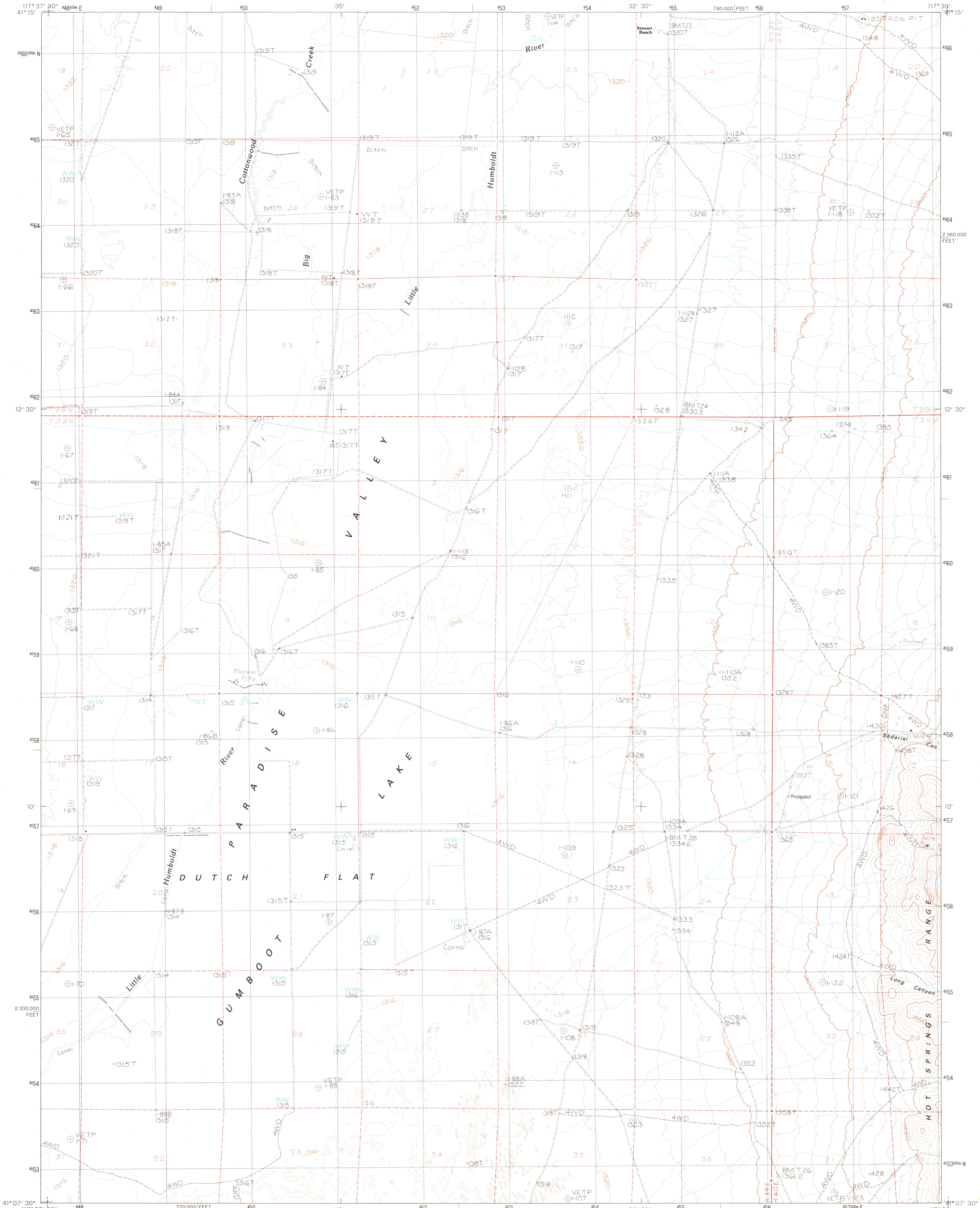


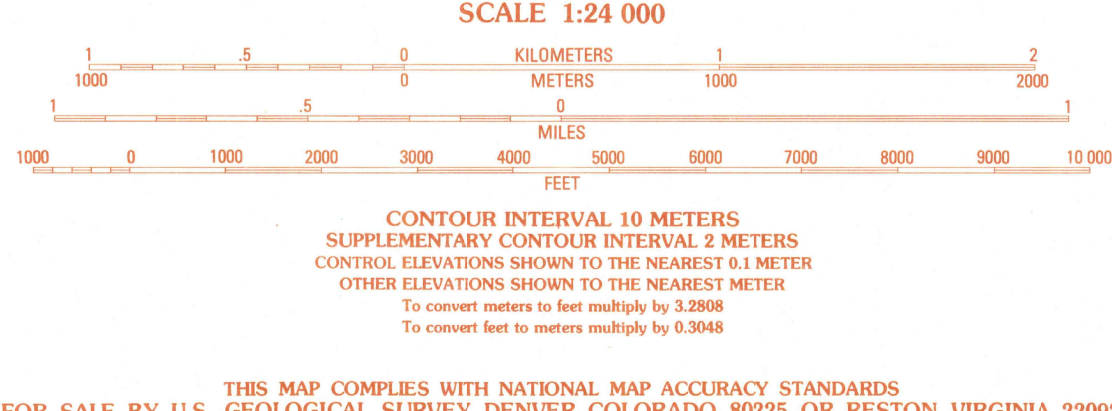
UNITED STATES  
DEPARTMENT OF THE INTERIOR  
GEOLOGICAL SURVEY

GUMBOOT LAKE QUADRANGLE  
NEVADA—HUMBOLDT CO.  
7.5 MINUTE SERIES (TOPOGRAPHIC)



PRODUCED BY THE UNITED STATES GEOLOGICAL SURVEY  
CONTROL BY.....USGS, NOS/NOAA  
COMPILED FROM AERIAL PHOTOGRAPHS TAKEN.....1979  
FIELD CHECKED.....1980 MAP EDITED.....1983  
PROJECTION.....UNIVERSAL TRANSVERSE MERCATOR  
GRID: 1000-METER UNIVERSAL TRANSVERSE MERCATOR.....ZONE 11  
10,000-FOOT STATE GRID TICS.....NEVADA, WEST ZONE  
UTM GRID DECLINATION.....17° EAST  
1980 MAGNETIC NORTH DECLINATION.....17° EAST  
VERTICAL DATUM, NATIONAL GEODETIC VERTICAL DATUM OF 1929  
HORIZONTAL DATUM.....1927 NORTH AMERICAN DATUM  
To place on the predicted North American Datum of 1983,  
move the projection lines as shown by dashed corner ticks  
(14 meters north / 80 meters east)  
There may be private inholdings within the boundaries of any  
Federal and State Reservations shown on this map

**PROVISIONAL MAP**  
Produced from original  
manuscript drawings. Informa-  
tion shown as of date of  
field check.



1	2	3	4	5	6	7	8
Paradise Well	Willow Point	Hot Springs Peak	China Garden	Delvada Spring	Wesley	Golconda Butte	Anderson Gardens

CONTOURS AND ELEVATIONS IN METERS  
ROAD LEGEND  
Improved Road.....  
Unimproved Road.....  
Trail.....  
Interstate Route.....  
U.S. Route.....  
State Route.....  
**GUMBOOT LAKE, NEV.**  
**PROVISIONAL EDITION 1983**  
41117-B5-TM-024

OCT 31 1983  
RETURN TO:  
USGS AND HISTORICAL MAP ARCHIVES