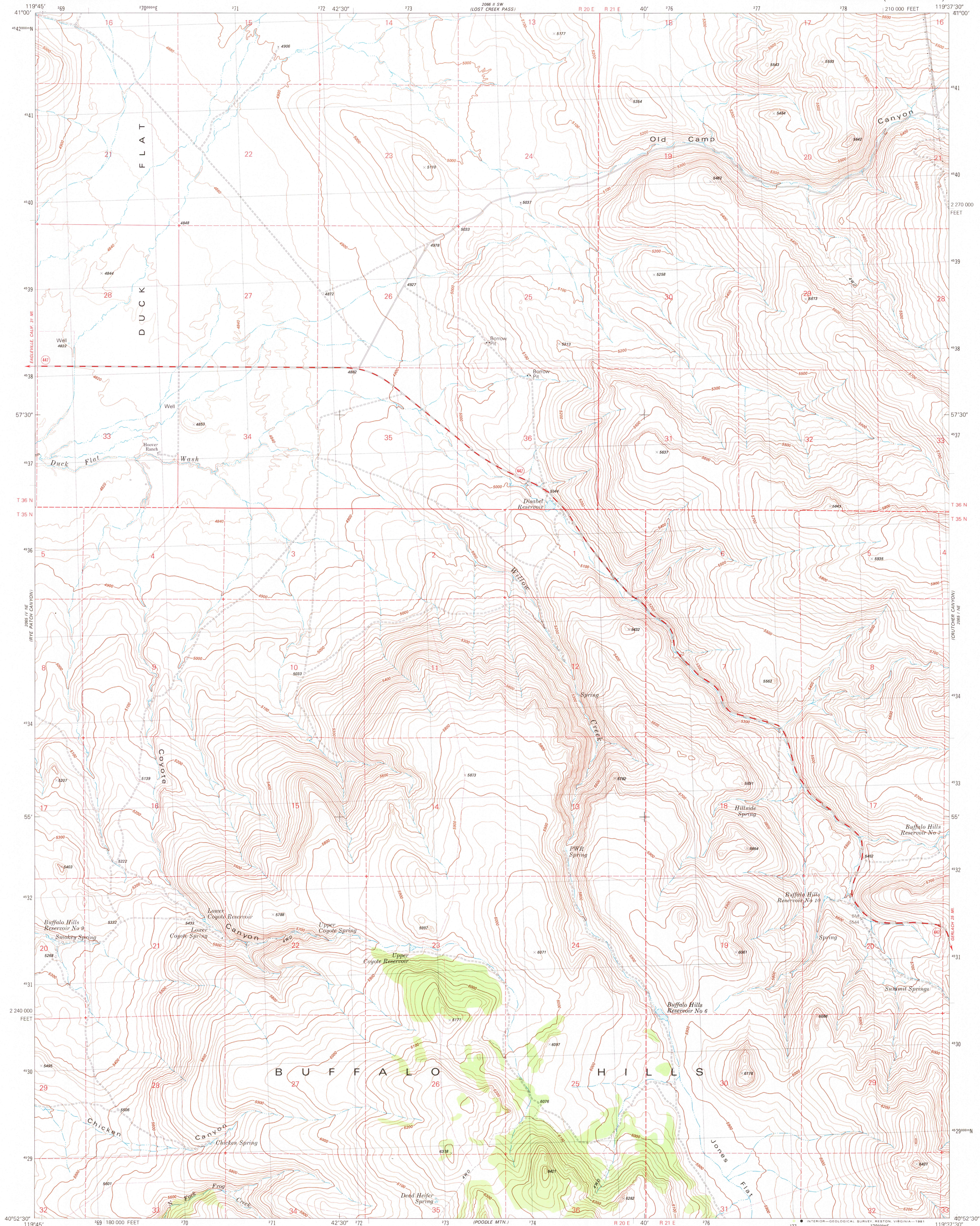


UNITED STATES
DEPARTMENT OF THE INTERIOR
GEOLOGICAL SURVEY

HILLSIDE SPRING QUADRANGLE
NEVADA-WASHOE CO.
7.5 MINUTE SERIES (TOPOGRAPHIC)



Mapped, edited, and published by the Geological Survey

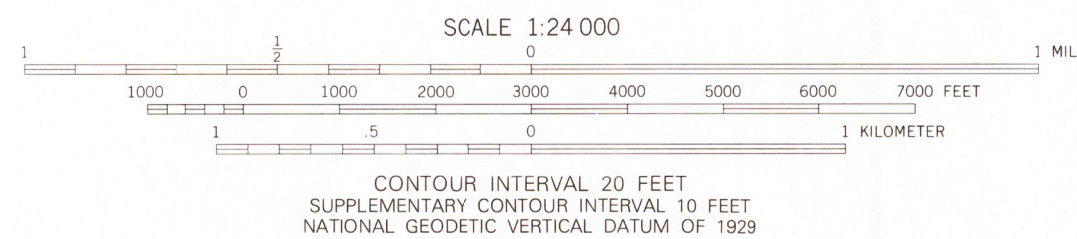
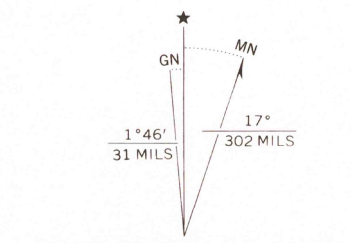
Control by USGS and NOS/NOAA

Topography by photogrammetric methods from aerial
photographs taken 1974. Field checked 1975
Map edited 1981

Projection and 10,000-foot grid ticks: Nevada coordinate
system, west zone (transverse Mercator)
1000-meter Universal Transverse Mercator grid, zone 11
1927 North American Datum

To place on the predicted North American Datum 1983
move the projection lines 16 meters north and
86 meters east as shown by dashed corner ticks

Fine red dashed lines indicate selected fence and field lines where
generally visible on aerial photographs. This information is unchecked



THIS MAP COMPLIES WITH NATIONAL MAP ACCURACY STANDARDS
FOR SALE BY U. S. GEOLOGICAL SURVEY, DENVER, COLORADO 80225, OR RESTON, VIRGINIA 22092
A FOLDER DESCRIBING TOPOGRAPHIC MAPS AND SYMBOLS IS AVAILABLE ON REQUEST



ROAD CLASSIFICATION	
Primary highway, hard surface	Light-duty road, hard or improved surface
Secondary highway, hard surface	Unimproved road
Interstate Route	U. S. Route
	State Route

USGS
HISTORICAL FILE
NATIONAL MAPING DIVISION

HILLSIDE SPRING, NEV.
N4052.5-W11937.5/7.5

1981

DMA 2065 1 NW-SERIES V896

JUN 29 1981
2100