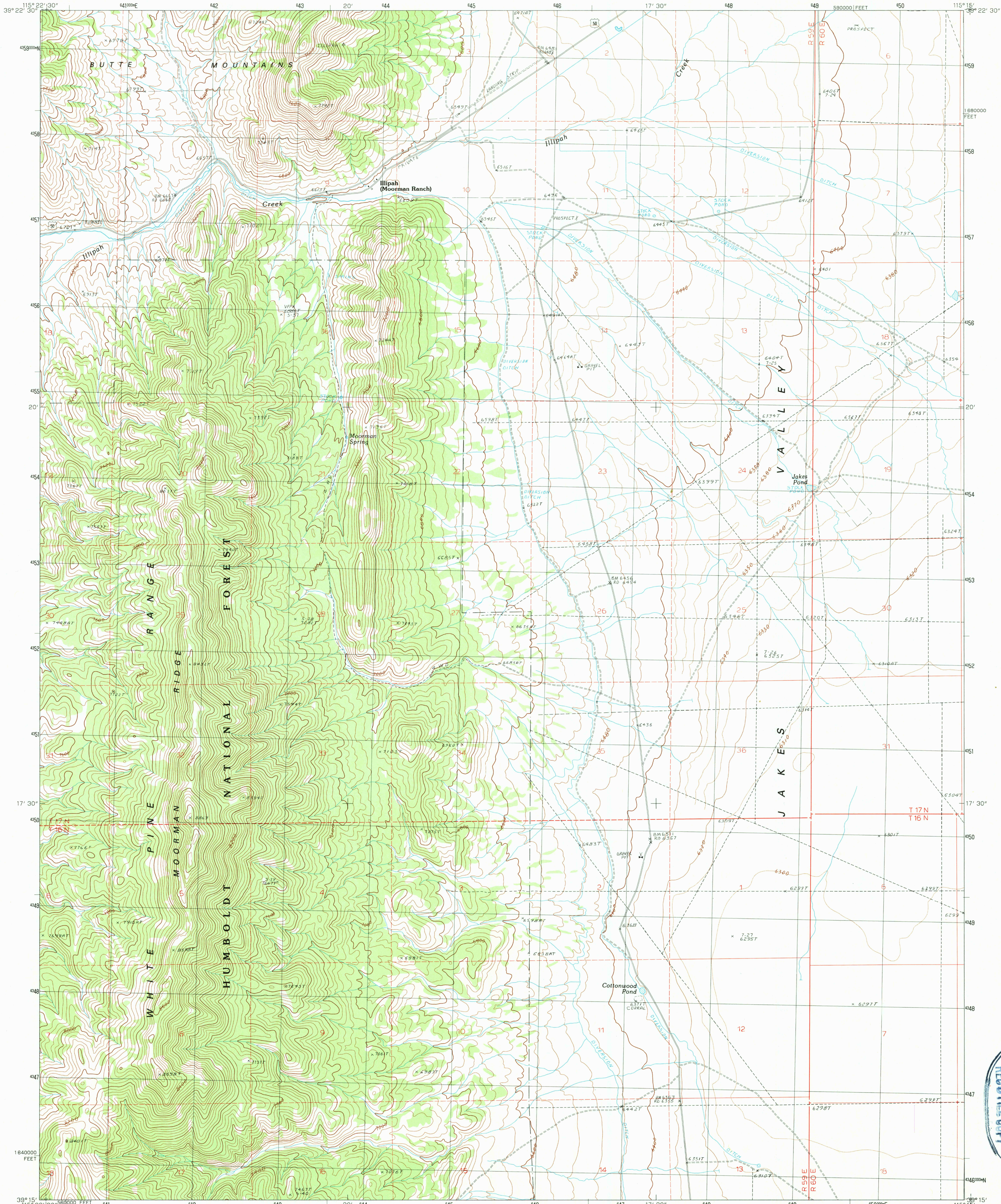


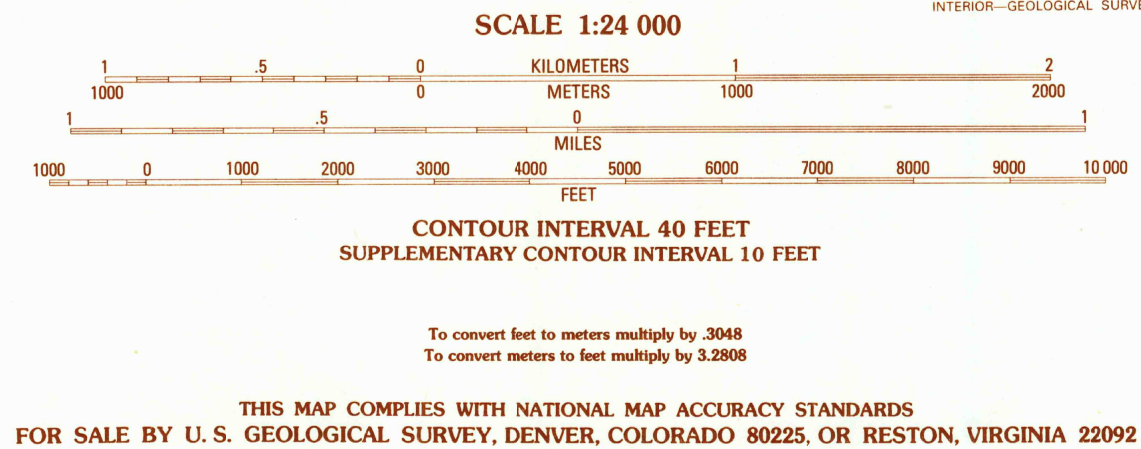
UNITED STATES
DEPARTMENT OF THE INTERIOR
GEOLOGICAL SURVEY

ILLIPAH QUADRANGLE
NEVADA-WHITE PINE CO.
7.5 MINUTE SERIES (TOPOGRAPHIC)



PRODUCED BY THE UNITED STATES GEOLOGICAL SURVEY
CONTROL BY...USGS AND NOS/NOAA
COMPILED FROM AERIAL PHOTOGRAPHS TAKEN...1985-86
FIELD CHECKED...1987. MAP EDITED...1990
PROJECTION...TRANSVERSE MERCATOR
GRID: 1000-METER UNIVERSAL TRANSVERSE MERCATOR...ZONE 11
10,000-FOOT STATE GRID TICKS...NEVADA, EAST ZONE
UTM GRID DECLINATION...1°04' EAST
1990 MAGNETIC NORTH DECLINATION...15°00' EAST
VERTICAL DATUM...NATIONAL GEODETIC VERTICAL DATUM OF 1929
HORIZONTAL DATUM...1927 NORTH AMERICAN DATUM
To place on the predicted North American Datum of 1983,
move the projection lines as shown by dashed corner ticks
(10 meters north and 75 meters east)
There may be private inholdings within the boundaries of any
Federal or State reservations shown on this map

PROVISIONAL MAP
Produced from original
manuscript drawings. Infor-
mation shown as of date of
field check.



ROAD LEGEND

Improved Road
Unimproved Road
Trail

○ Interstate Route □ U. S. Route ○ State Route

ILLIPAH, NEVADA
PROVISIONAL EDITION 1990
39115-C3-TF-024

ADJOINING 7.5' QUADRANGLE NAMES

1	2	3
4	5	6
7	8	9

1 Antelope Mtn.
2 Sammy Springs
3 Marking Corral Summit
4 Hamilton
5 Waddy Pond
6 Treasure Hill
7 Limestone Peak
8 Railroad Crossing Dam