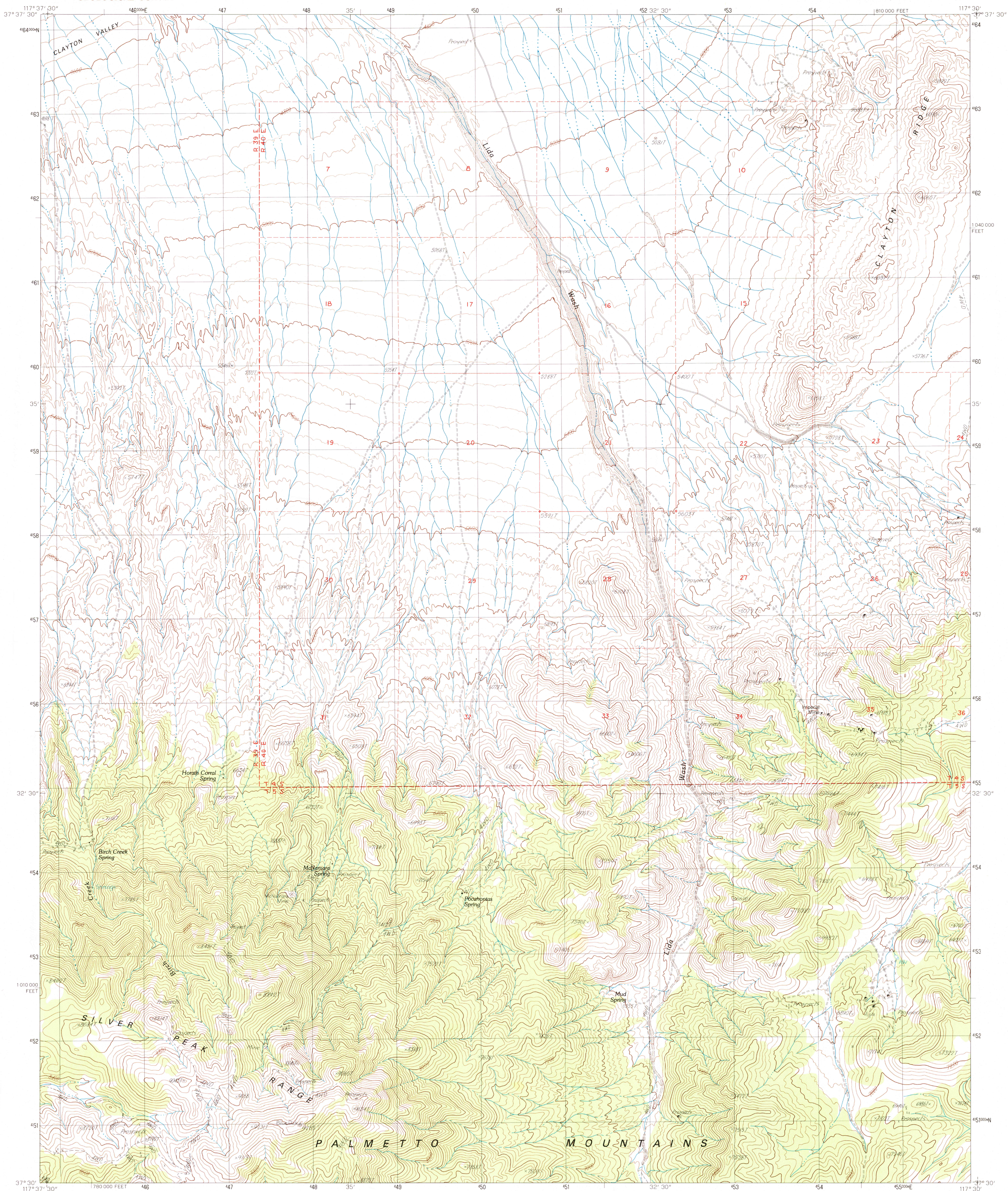


UNITED STATES
DEPARTMENT OF THE INTERIOR
GEOLOGICAL SURVEY

LIDA WASH QUADRANGLE
NEVADA—ESMERALDA CO.
7.5 MINUTE SERIES (TOPOGRAPHIC)



PRODUCED BY THE UNITED STATES GEOLOGICAL SURVEY
CONTROL BY THE UNITED STATES GEOLOGICAL SURVEY
COMPILED FROM AERIAL PHOTOGRAPHS TAKEN 1958
FIELD CHECKED 1963
LIMITED REVISION FROM AERIAL PHOTOGRAPHS TAKEN 1980 AND 1984
FIELD CHECKED 1985. MAP EDITED 1987
PROJECTION TRANSVERSE MERCATOR
GRID 100,000-METER UNIVERSAL TRANSVERSE MERCATOR
10,000-FOOT STATE GRID TICKS NEVADA WEST ZONE
UTM GRID DECLINATION 0°21' WEST
1980 MAGNETIC NORTH DECLINATION 15°30' EAST
VERTICAL DATUM NATIONAL GEODETIC VERTICAL DATUM OF 1929
HORIZONTAL DATUM 1927 NORTH AMERICAN DATUM
To place on the predicted North American Datum of 1983,
move the projection lines as shown by dashed corner ticks
(10 meters north and 81 meters east)
There may be private inholdings within the boundaries of any
Federal and State Reservations shown on this map
Public Land Survey System is shown as published in 1963 and
verified or supplemented in 1985
Certain land lines are omitted because of insufficient data

PROVISIONAL MAP
Produced from original
manuscript drawings. Infor-
mation shown as of date of
field check.

SCALE 1:24 000
KILOMETERS 0 1 2
METERS 0 1000 2000
MILES 0 1 2
FEET 0 1000 2000 3000 4000 5000 6000 7000 8000 9000 10 000
CONTOUR INTERVAL 40 FEET
To convert meters to feet multiply by 3.2808
To convert feet to meters multiply by 0.3048
THIS MAP COMPLES WITH NATIONAL MAP ACCURACY STANDARDS
FOR SALE BY U.S. GEOLOGICAL SURVEY, DENVER, COLORADO 80225, OR RESTON, VIRGINIA 22092

1	2	3	1 Lida Wash NW
4	5	2 Alcatraz Island	3 Split Mountain
6	7	8	4 Lida Wash SW
			5 Montezuma Peak SW
			6 Sylvania Mtn.
			7 Magruder Mtn.
			8 Lida

ADJOINING 7.5' QUADRANGLE NAMES

ROAD LEGEND
Improved Road
Unimproved Road
Trail
Interstate Route U.S. Route State Route
LIDA WASH, NEV.
PROVISIONAL EDITION 1987
37117-E5-TF-024

USGS RMP HISTORICAL MAP
SEP 09 1988
REC'D FILE COPY