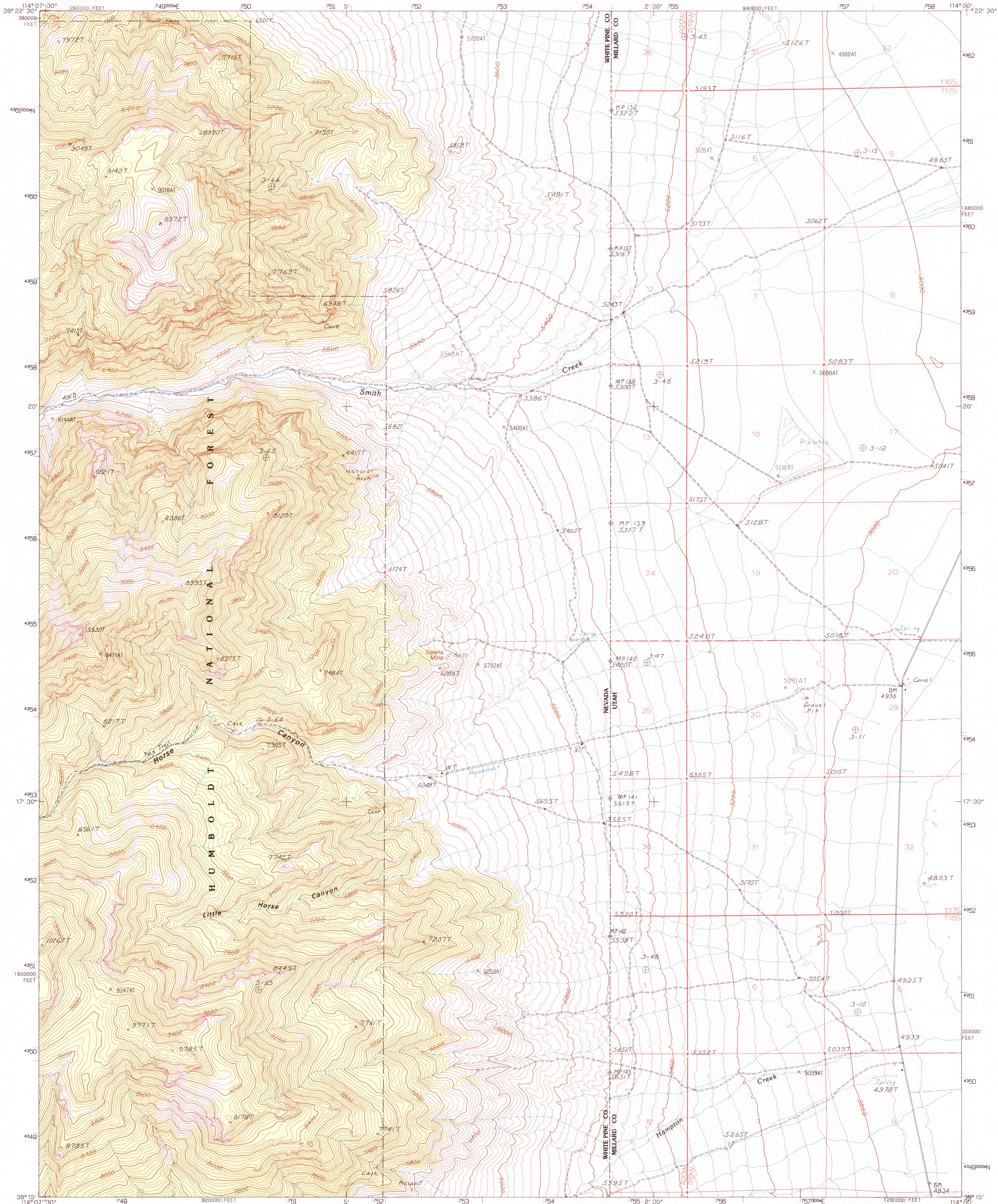


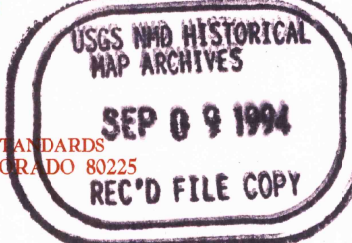
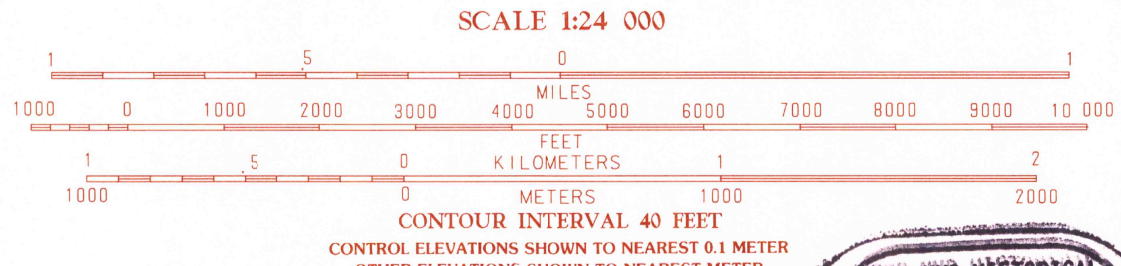
UNITED STATES
DEPARTMENT OF THE INTERIOR
GEOLOGICAL SURVEY

LITTLE HORSE CANYON QUADRANGLE
NEVADA-UTAH
7.5 MINUTE SERIES (TOPOGRAPHIC)



PRODUCED BY THE UNITED STATES GEOLOGICAL SURVEY
CONTROL BY USGS, NOS/NOAA
COMPILED FROM AERIAL PHOTOGRAPHS TAKEN 1980
FIELD CHECKED 1981. MAP EDITED 1986
PROJECTION TRANSVERSE MERCATOR
BLUE 1000-METER UNIVERSAL TRANSVERSE MERCATOR TICS ZONE 11
10 000-FOOT STATE GRID TICS NEVADA, EAST ZONE
UTAH, CENTRAL ZONE
UTM GRID DECLINATION 14°30' EAST
1993 MAGNETIC NORTH DECLINATION 14°30' EAST
VERTICAL DATUM NATIONAL GEODETIC VERTICAL DATUM OF 1929
HORIZONTAL DATUM 1927 NORTH AMERICAN DATUM (NAD 27)
The difference between NAD 27 and North American Datum of 1983 (NAD 83) for 7.5 minute intersections is given in USGS
Bulletin 1875. The NAD 83 is shown by dashed corner ticks
There may be private inholdings within the boundaries of any
Federal and State reservations shown on this map
Where omitted, land lines have not been established
Photosinspected from 1990 source; no major culture or drainage
changes observed. Boundaries verified and names revised 1993

PROVISIONAL MAP
Produced from original
manuscript drawings. Infor-
mation shown as of date of
field check. 2



1	2	3	1
4	5	6	2
7	8	9	3

ADJOINING 7.5' QUADRANGLE NAMES

ROAD LEGEND
Improved Road
Unimproved Road
Trail
Interstate Route U.S. Route State Route

LITTLE HORSE CANYON, NEV.-UTAH
PROVISIONAL EDITION 1986

39114-C1-TF-024
MINOR REVISION 1993