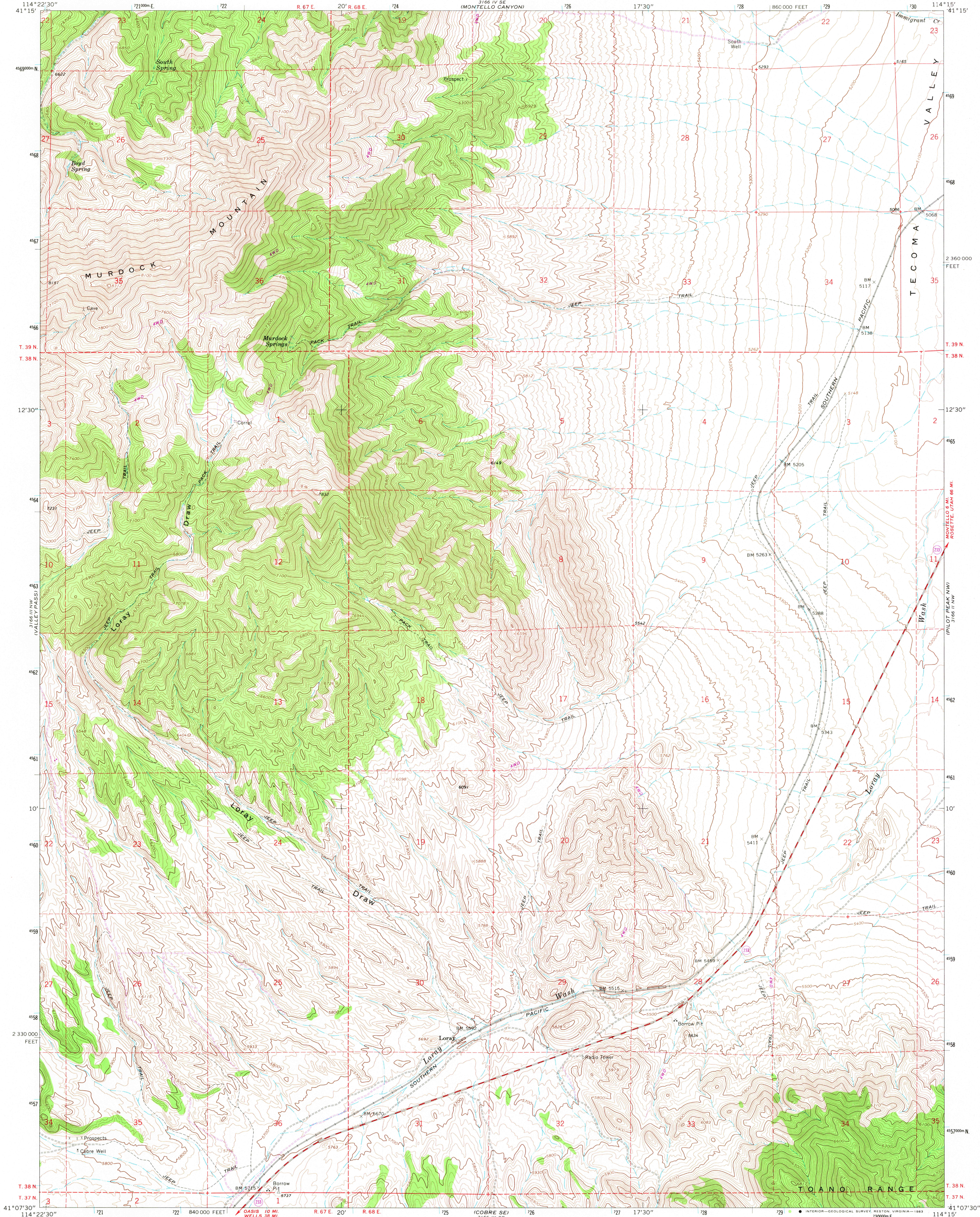


UNITED STATES
DEPARTMENT OF THE INTERIOR
GEOLOGICAL SURVEY

LORAY QUADRANGLE
NEVADA-ELKO CO.
7.5 MINUTE SERIES (TOPOGRAPHIC)



Mapped, edited, and published by the Geological Survey

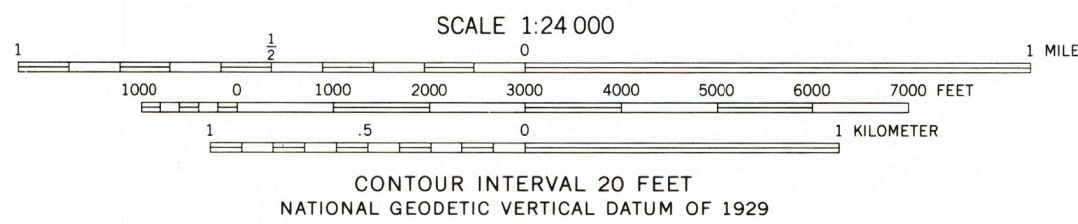
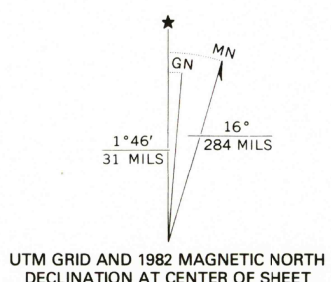
Control by USGS and NOS/NOAA

Topography by photogrammetric methods from aerial photographs taken 1966. Field checked 1967

Polyconic projection. 1927 North American datum 10,000-foot grid based on Nevada coordinate system, east zone 1000-meter Universal Transverse Mercator grid ticks, zone 11, shown in blue

To place on the predicted North American Datum 1983 move the projection lines 12 meters north and 72 meters east as shown by dashed corner ticks

Certain land lines are omitted because of insufficient data



ROAD CLASSIFICATION
Medium-duty ——— Unimproved dirt ———
○ State Route

LORAY, NEV.
N4107.5—W11415.7.5

1967
PHOTOREVISED 1982
DMA 3166 III NE-SERIES V896

THIS MAP COMPLIES WITH NATIONAL MAP ACCURACY STANDARDS
FOR SALE BY U.S. GEOLOGICAL SURVEY, DENVER, COLORADO 80225, OR RESTON, VIRGINIA 22092
A FOLDER DESCRIBING TOPOGRAPHIC MAPS AND SYMBOLS IS AVAILABLE ON REQUEST

Revision shown in purple compiled from aerial photographs taken 1980 and other source data. This information not field checked. Map edited 1982

7000
RETURN TO:
USGS MAP HISTORICAL MAP ARCHIVE