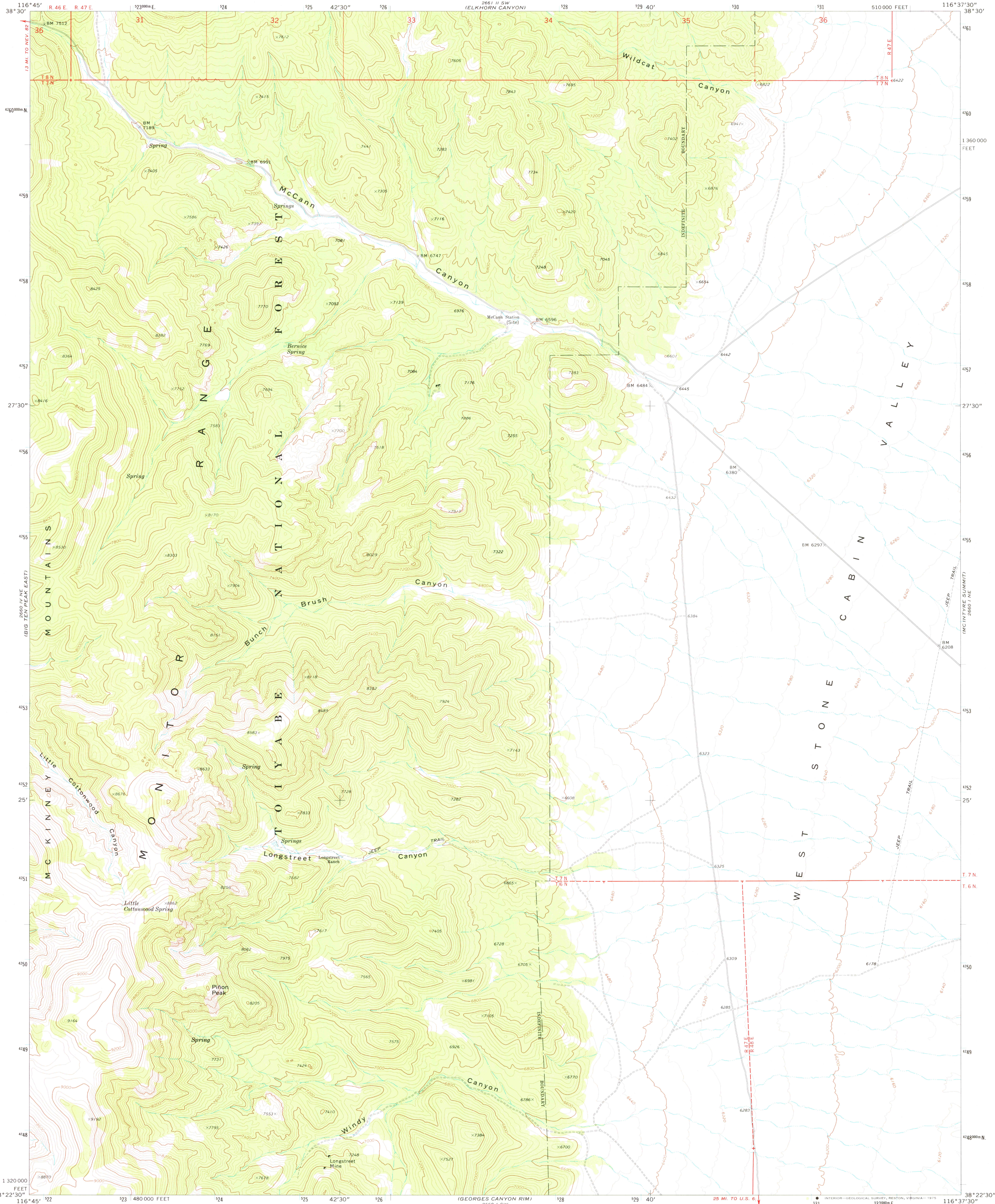


UNITED STATES  
DEPARTMENT OF THE INTERIOR  
GEOLOGICAL SURVEY

McCANN CANYON QUADRANGLE  
NEVADA—N.Y.E. CO.  
7.5 MINUTE SERIES (TOPOGRAPHIC)



Mapped, edited, and published by the Geological Survey

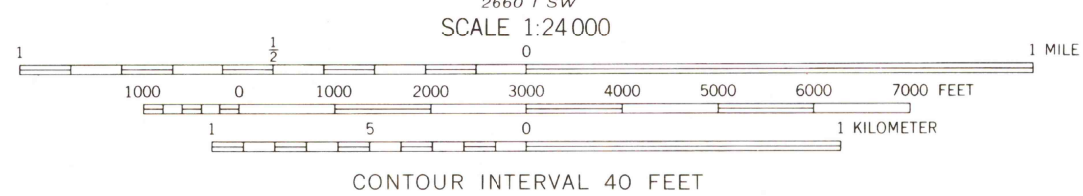
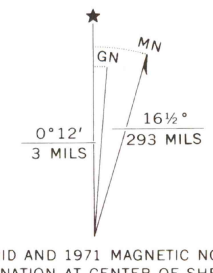
Control by USGS and NOS/NOAA

Topography by photogrammetric methods from aerial photographs taken 1967 and 1970. Field checked 1971

Projection and 10,000-foot grid ticks: Nevada coordinate system, central zone (transverse Mercator)

1000-meter Universal Transverse Mercator grid ticks, zone 11, shown in blue. 1927 North American datum

Where omitted, land lines have not been established or are not shown because of insufficient data



| ROAD CLASSIFICATION             |   |
|---------------------------------|---|
| Primary highway, hard surface   | Light-duty road, hard or improved surface |
| Secondary highway, hard surface | Unimproved road                           |
| Interstate Route                | U.S. Route                                |
|                                 | State Route                               |

USGS  
Historical File  
Topographic Division

McCANN CANYON, NEV.  
N3822.5—W11637.5/7.5

1971

AMS 2660 1 NW—SERIES V896

THIS MAP COMPLIES WITH NATIONAL MAP ACCURACY STANDARDS  
FOR SALE BY U.S. GEOLOGICAL SURVEY, DENVER, COLORADO 80225, OR RESTON, VIRGINIA 22092  
A FOLDER DESCRIBING TOPOGRAPHIC MAPS AND SYMBOLS IS AVAILABLE ON REQUEST