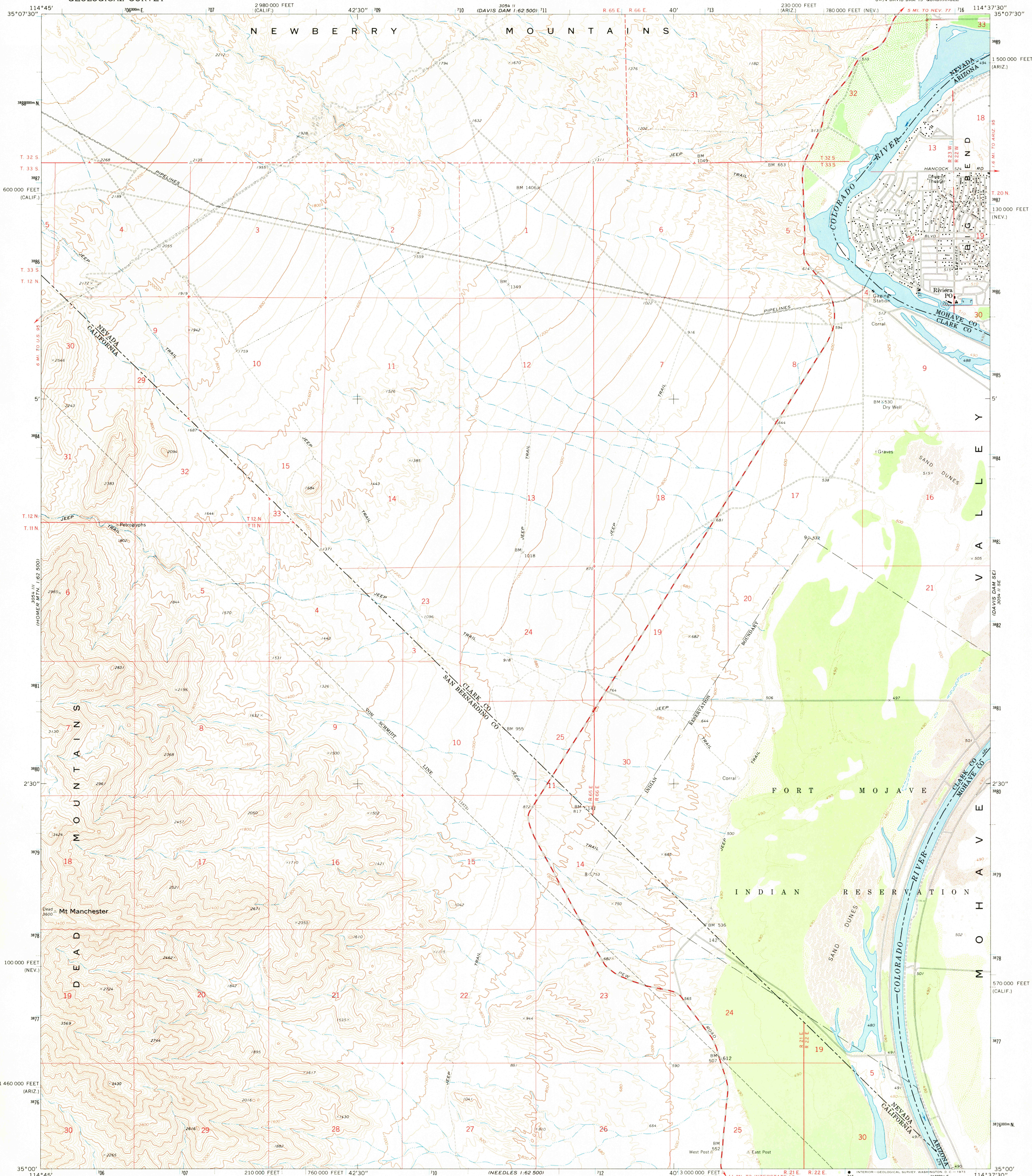
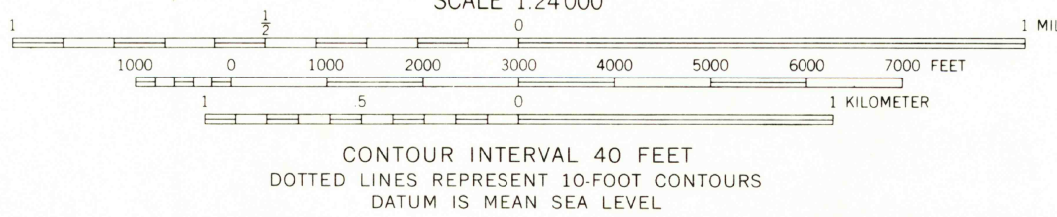
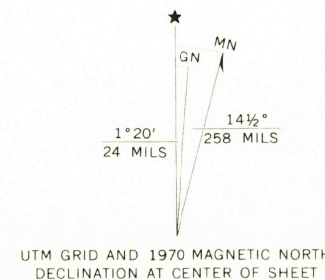


UNITED STATES
DEPARTMENT OF THE INTERIOR
GEOLOGICAL SURVEY

MT. MANCHESTER QUADRANGLE
NEVADA-CALIFORNIA-ARIZONA
7.5 MINUTE SERIES (TOPOGRAPHIC)
SW 1/4 DAVIS DAM 15' QUADRANGLE



Mapped, edited, and published by the Geological Survey
Control by USGS and USC&GS
Topography by photogrammetric methods from aerial
photographs taken 1969. Field checked 1970
Polyconic projection, 1927 North American datum
10,000-foot grids based on Nevada coordinate system,
east zone, California coordinate system, zone 5,
and Arizona coordinate system, west zone
1000-meter Universal Transverse Mercator grid ticks,
zone 11, shown in blue
Where omitted, land lines have not been established
or are not shown because of insufficient data



ROAD CLASSIFICATION
Primary highway, hard surface
Secondary highway, hard surface
Unimproved road
Interstate Route
U. S. Route
State Route

MT. MANCHESTER, NEV.-CALIF.-ARIZ.

AMS 3054 II SW-SERIES V886
MAY 14 1973
TOPOGRAPHIC DIVISION
SW 1/4 DAVIS DAM 15' QUADRANGLE
35000-W11437.5/7.5

THIS MAP COMPLIES WITH NATIONAL MAP ACCURACY STANDARDS
FOR SALE BY U. S. GEOLOGICAL SURVEY, DENVER, COLORADO 80225, OR WASHINGTON, D. C. 20242
A FOLDER DESCRIBING TOPOGRAPHIC MAPS AND SYMBOLS IS AVAILABLE ON REQUEST