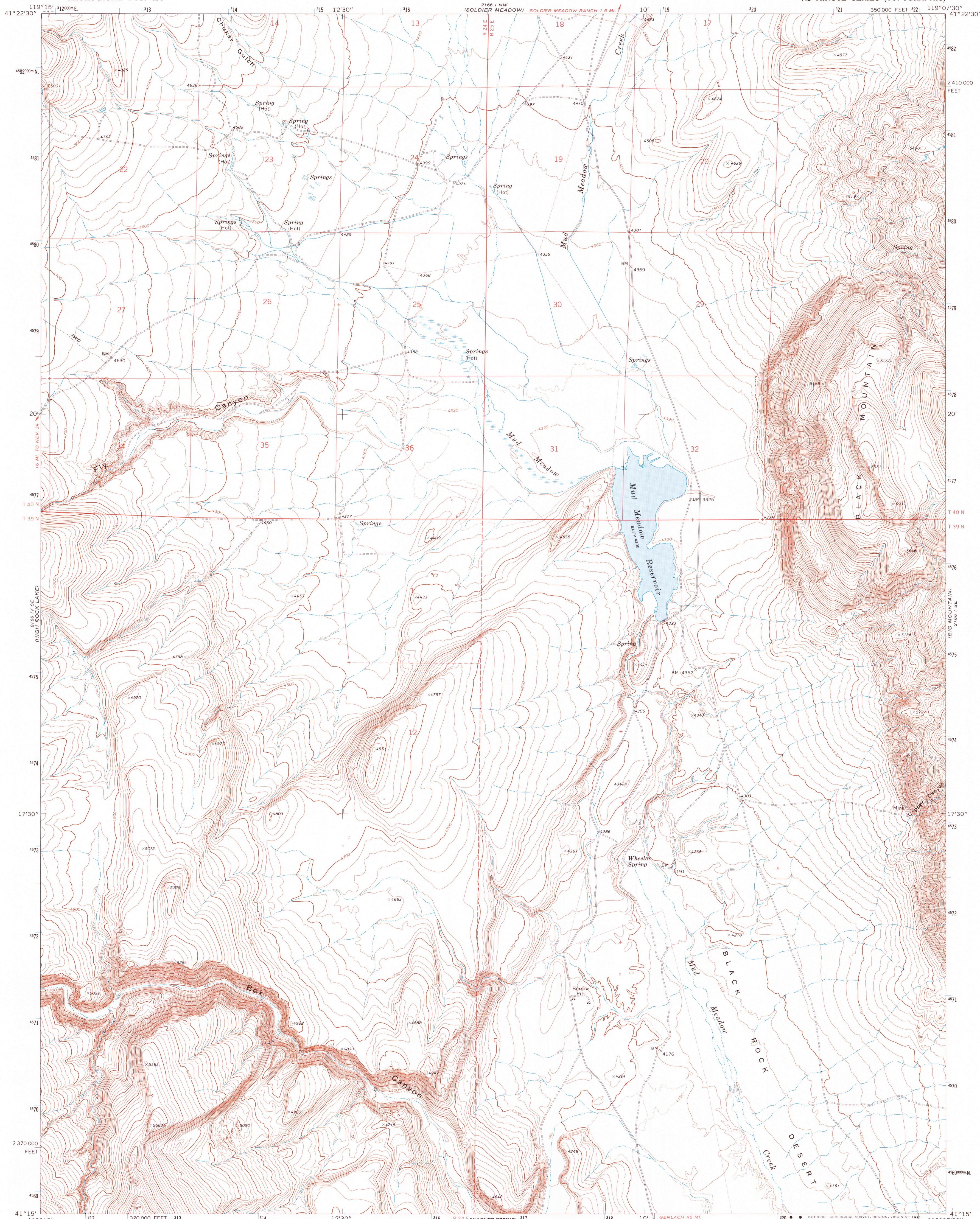


UNITED STATES  
DEPARTMENT OF THE INTERIOR  
GEOLOGICAL SURVEY

MUD MEADOW QUADRANGLE  
NEVADA—HUMBOLDT CO.  
7.5 MINUTE SERIES (TOPOGRAPHIC)



Mapped, edited, and published by the Geological Survey  
Control by USGS and NOS/NOAA

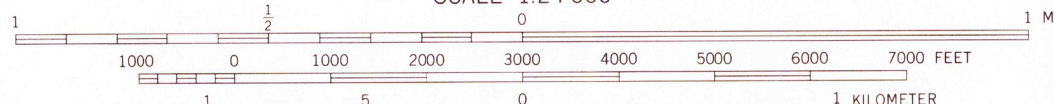
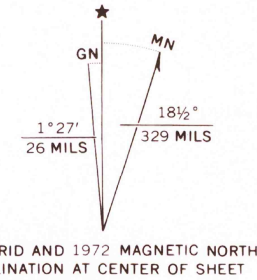
Topography by photogrammetric methods from aerial  
photographs taken 1971. Field checked 1972

Projection and 10,000-foot grid ticks: Nevada coordinate  
system, west zone (transverse Mercator)  
1000-meter Universal Transverse Mercator grid ticks, zone 11  
shown in blue. 1927 North American Datum

Fine red dashed lines indicate selected fence lines  
Where omitted, land lines have not been established  
or are not shown because of insufficient data

To place on the predicted North American Datum 1983  
move the projection lines 16 meters north and 85 meters  
east as shown by dashed corner ticks

Map photoinspected 1980  
No major culture or drainage changes observed

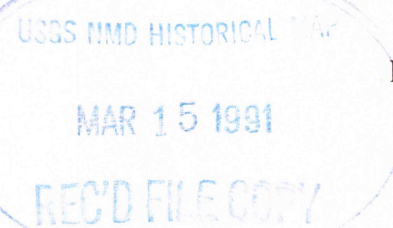


CONTOUR INTERVAL 20 FEET  
DOTTED LINES REPRESENT 10-FOOT CONTOURS  
NATIONAL GEODETIC VERTICAL DATUM OF 1929

THIS MAP COMPLIES WITH NATIONAL MAP ACCURACY STANDARDS  
FOR SALE BY U.S. GEOLOGICAL SURVEY, DENVER, COLORADO 80225, OR RESTON, VIRGINIA 22092  
A FOLDER DESCRIBING TOPOGRAPHIC MAPS AND SYMBOLS IS AVAILABLE ON REQUEST



ROAD CLASSIFICATION	
Primary highway, hard surface	Light-duty road, hard or improved surface
Secondary highway, hard surface	Unimproved road
Interstate Route	U. S. Route
	State Route



MUD MEADOW, NEV.  
41119-C2-TF-024

1972  
PHOTOINSPECTED 1980  
DMA 2166 1 SW-SERIES V896