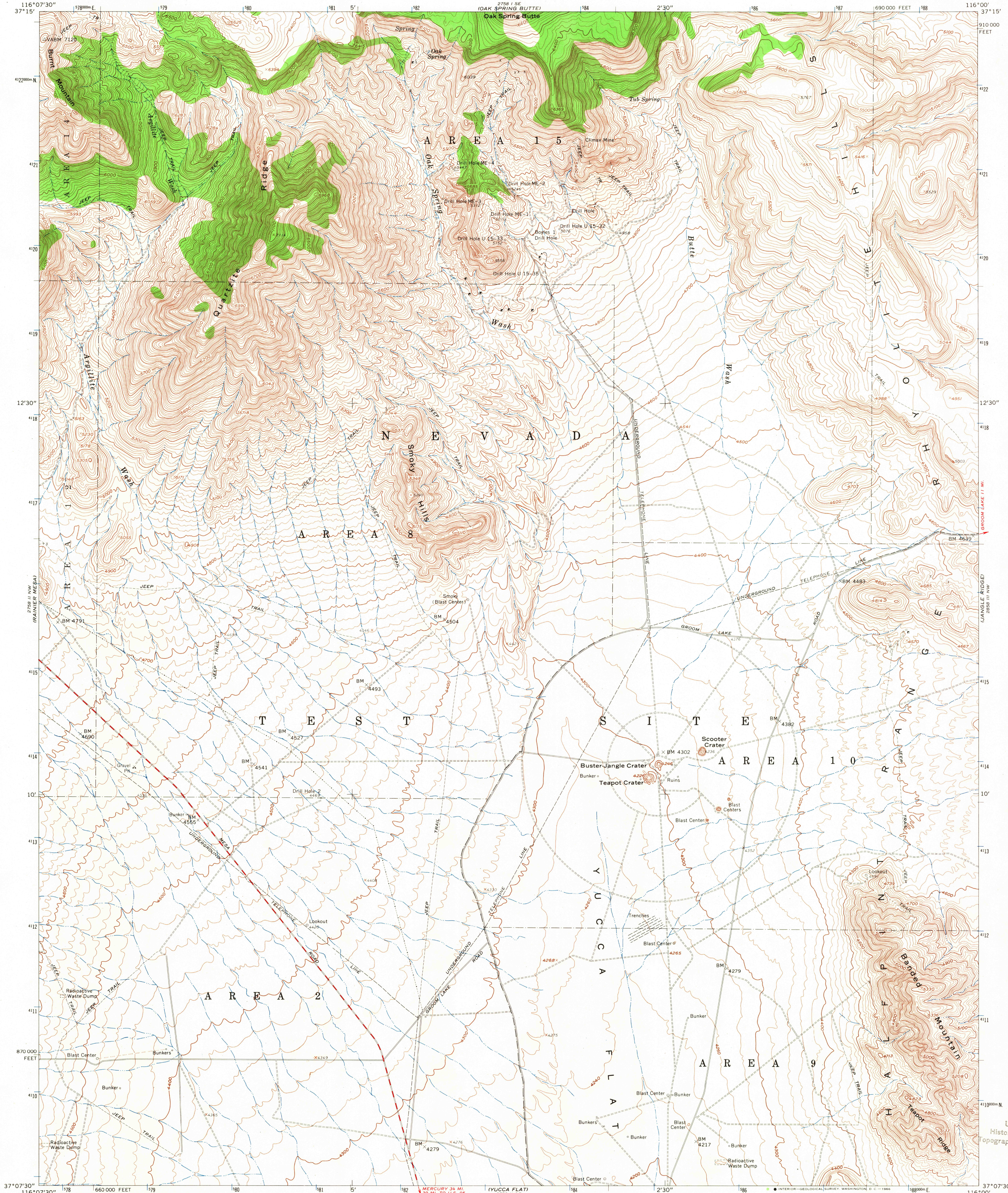
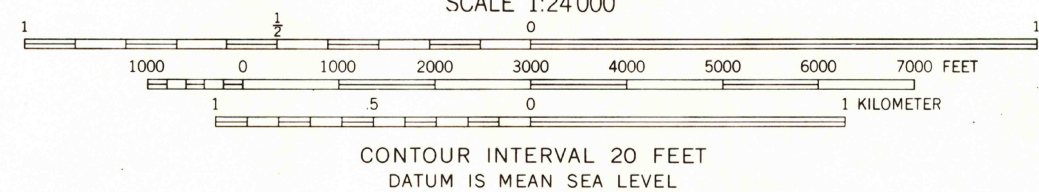
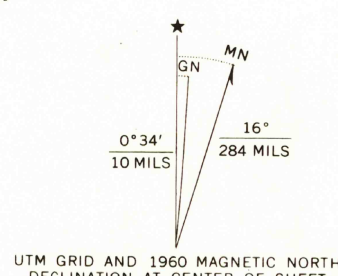


UNITED STATES
DEPARTMENT OF THE INTERIOR
GEOLOGICAL SURVEY

OAK SPRING QUADRANGLE
NEVADA-NYE CO.
7.5 MINUTE SERIES (TOPOGRAPHIC)
NE 4 TIPPICAH SPRING 15' QUADRANGLE



Mapped by the Atomic Energy Commission and the Geological Survey
Edited and published by the Geological Survey
Control by USGS, USC&GS, USCE, and Atomic Energy Commission
Topography from aerial photographs by photogrammetric methods
Aerial photographs taken 1958. Field check 1960
Polyconic projection. 1927 North American datum
10,000-foot grid based on Nevada coordinate system, central zone
1000-meter Universal Transverse Mercator grid ticks,
zone 11, shown in blue



ROAD CLASSIFICATION
Medium-duty ——— Light-duty ———
Unimproved dirt ———



U.S.G.S.
TOPOGRAPHIC DIVISION

OAK SPRING, NEV.
NE 4 TIPPICAH SPRING 15' QUADRANGLE
N3707.5-W11600/7.5
1960
AMS 2758 II NE-SERIES V896

THIS MAP COMPLIES WITH NATIONAL MAP ACCURACY STANDARDS
FOR SALE BY U. S. GEOLOGICAL SURVEY, DENVER, COLORADO 80225 OR WASHINGTON, D. C. 20242
A FOLDER DESCRIBING TOPOGRAPHIC MAPS AND SYMBOLS IS AVAILABLE ON REQUEST