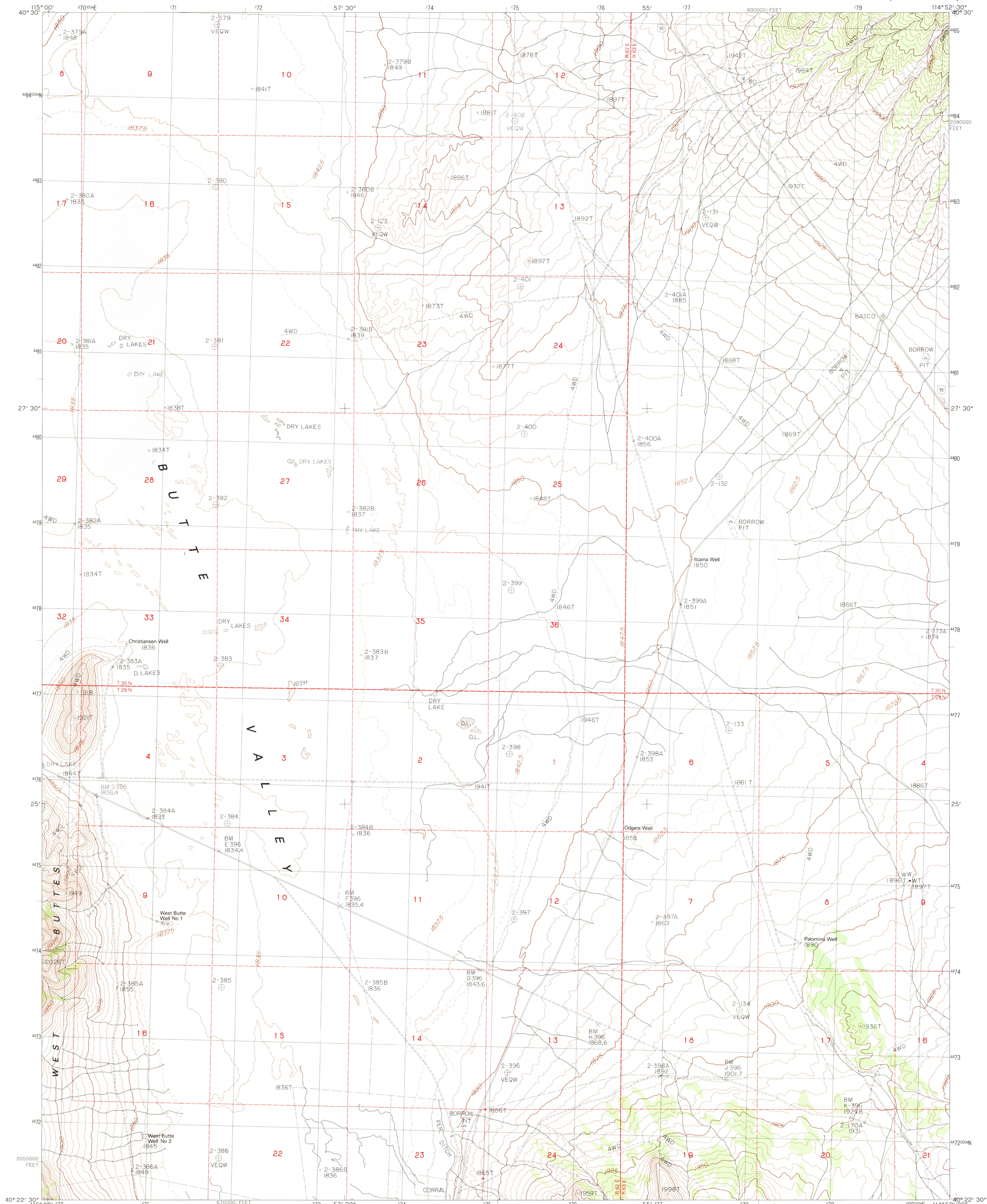


UNITED STATES
DEPARTMENT OF THE INTERIOR
GEOLOGICAL SURVEY

PALOMINO WELL QUADRANGLE
NEVADA-ELKO CO.
7.5 MINUTE SERIES (TOPOGRAPHIC)

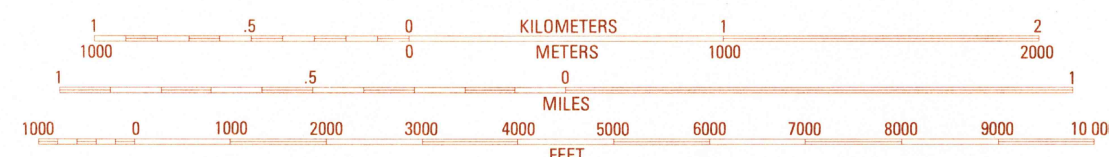


PRODUCED BY THE UNITED STATES GEOLOGICAL SURVEY
CONTROL BY: USGS, NOS/NOAA
COMPILED FROM AERIAL PHOTOGRAPHS TAKEN: 1978
FIELD CHECKED: 1980 MAP EDITED: 1984
PROJECTION: UNIVERSAL TRANSVERSE MERCATOR
GRID: 1000-METER UNIVERSAL TRANSVERSE MERCATOR - ZONE 11
10,000-FOOT STATE GRID TICKS: NEVADA, EAST ZONE
UTM GRID DECLINATION: 17°0' EAST
1980 MAGNETIC NORTH DECLINATION: 16° EAST
VERTICAL DATUM: NATIONAL GEODETIC VERTICAL DATUM OF 1929
HORIZONTAL DATUM: 1927 NORTH AMERICAN DATUM
To place on the predicted North American Datum of 1983,
move the projection lines as shown by dashed corner ticks
(11 meters north / 73 meters east.)
There may be private inholdings within the boundaries of any
Federal and State Reservations shown on this map
Certain land lines are omitted because of insufficient data

PROVISIONAL MAP
Produced from original
manuscript drawings. Infor-
mation shown as of date of
field check.

3

SCALE 1:24 000



CONTOUR INTERVAL 5 METERS
SUPPLEMENTARY CONTOUR INTERVAL 2.5 METERS
CONTROL ELEVATIONS SHOWN TO THE NEAREST 0.1 METER
OTHER ELEVATIONS SHOWN TO THE NEAREST METER
To convert meters to feet multiply by 3.2808
To convert feet to meters multiply by 0.3048

THIS MAP COMPLIES WITH NATIONAL MAP ACCURACY STANDARDS
FOR SALE BY U.S. GEOLOGICAL SURVEY, DENVER COLORADO 80225, OR RESTON, VIRGINIA 22092

1	2	3	1 Valley Mtn.
4	5	6	2 Spruce Well
7	8	7	3 Delcor Buttes
		8	4 Palomino Ridge
			5 Odgers Ranch
			6 Currie Gardens

ADJOINING 7.5 QUADRANGLE NAMES

CONTOURS AND ELEVATIONS IN METERS

ROAD LEGEND
Improved Road.....
Unimproved Road.....
Trail.....
Interstate Route U.S. Route State Route

PALOMINO WELL, NEV.
PROVISIONAL EDITION 1984
40114-D8-TM-024

RETURN TO:
USGS MAP HISTORICAL MAP ARCHIVES