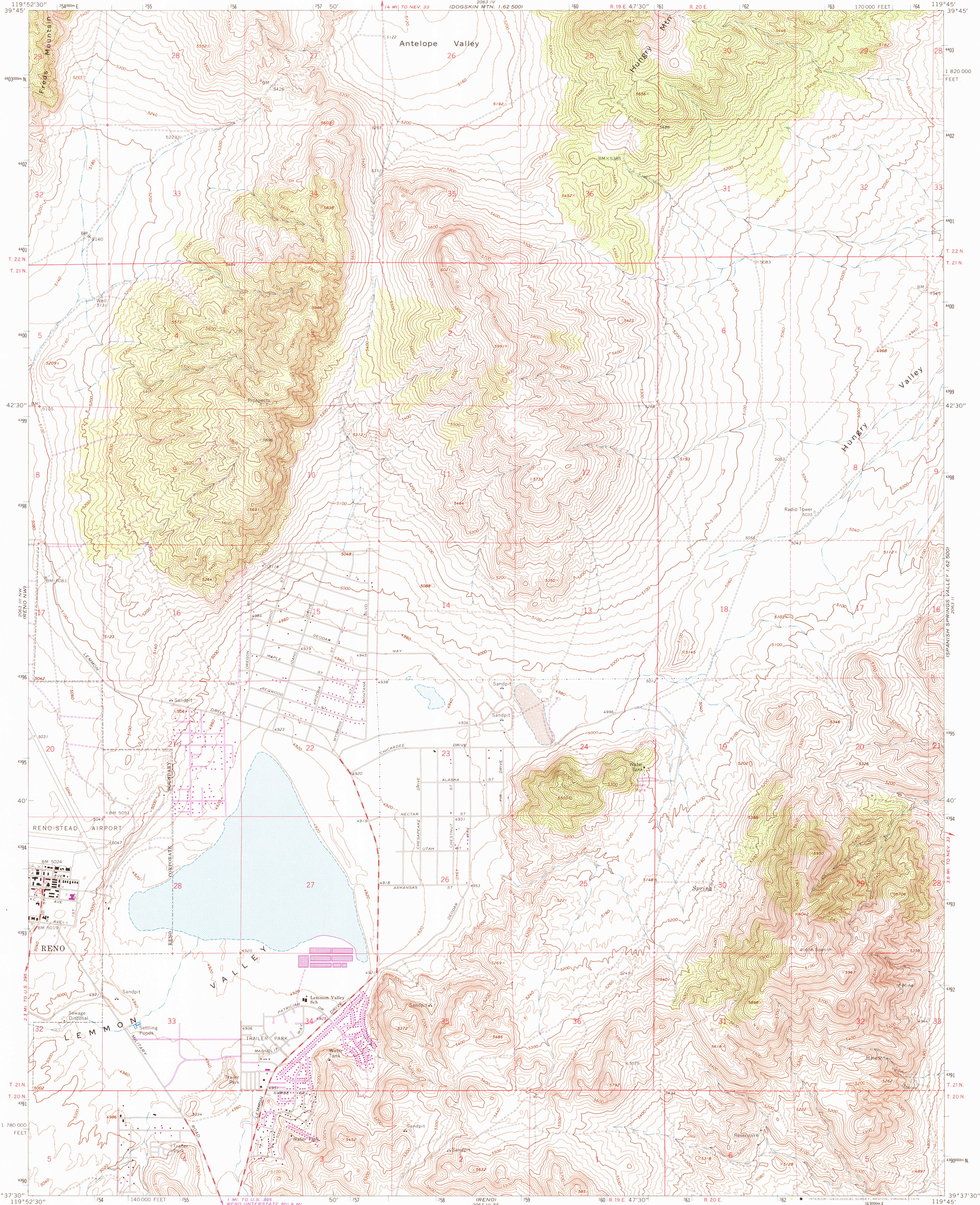
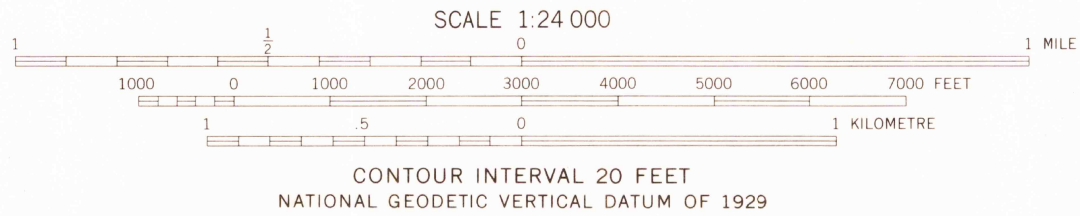
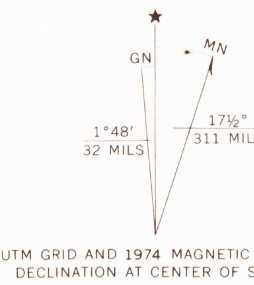


UNITED STATES
DEPARTMENT OF THE INTERIOR
GEOLOGICAL SURVEY

RENO NE QUADRANGLE
NEVADA—WASHOE CO.
7.5 MINUTE SERIES (TOPOGRAPHIC)
NE 1/4 RENO 15' QUADRANGLE



Mapped, edited, and published by the Geological Survey
Control by USGS and NOS/NOAA
Topography by photogrammetric methods from aerial
photographs taken 1966. Field checked 1967
Polyconic projection. 1927 North American datum
10,000-foot grid based on Nevada coordinate system,
west zone
1000-metre Universal Transverse Mercator grid ticks,
zone 11, shown in blue
Fine red dashed lines indicate selected fence lines



USGS
Historical File
Topographic Division

RENO NE, NEV.
NE 1/4 RENO 15' QUADRANGLE
N3937.5—W11945/7.5

MAR 29 1976

THIS MAP COMPLIES WITH NATIONAL MAP ACCURACY STANDARDS
FOR SALE BY U.S. GEOLOGICAL SURVEY, DENVER, COLORADO 80225, OR RESTON, VIRGINIA 22092
A FOLDER DESCRIBING TOPOGRAPHIC MAPS AND SYMBOLS IS AVAILABLE ON REQUEST

Revisions shown in purple compiled from aerial photographs
taken 1974. This information not field checked

1967
PHOTOREVISED 1974
AMS 2063 III NE—SERIES V896