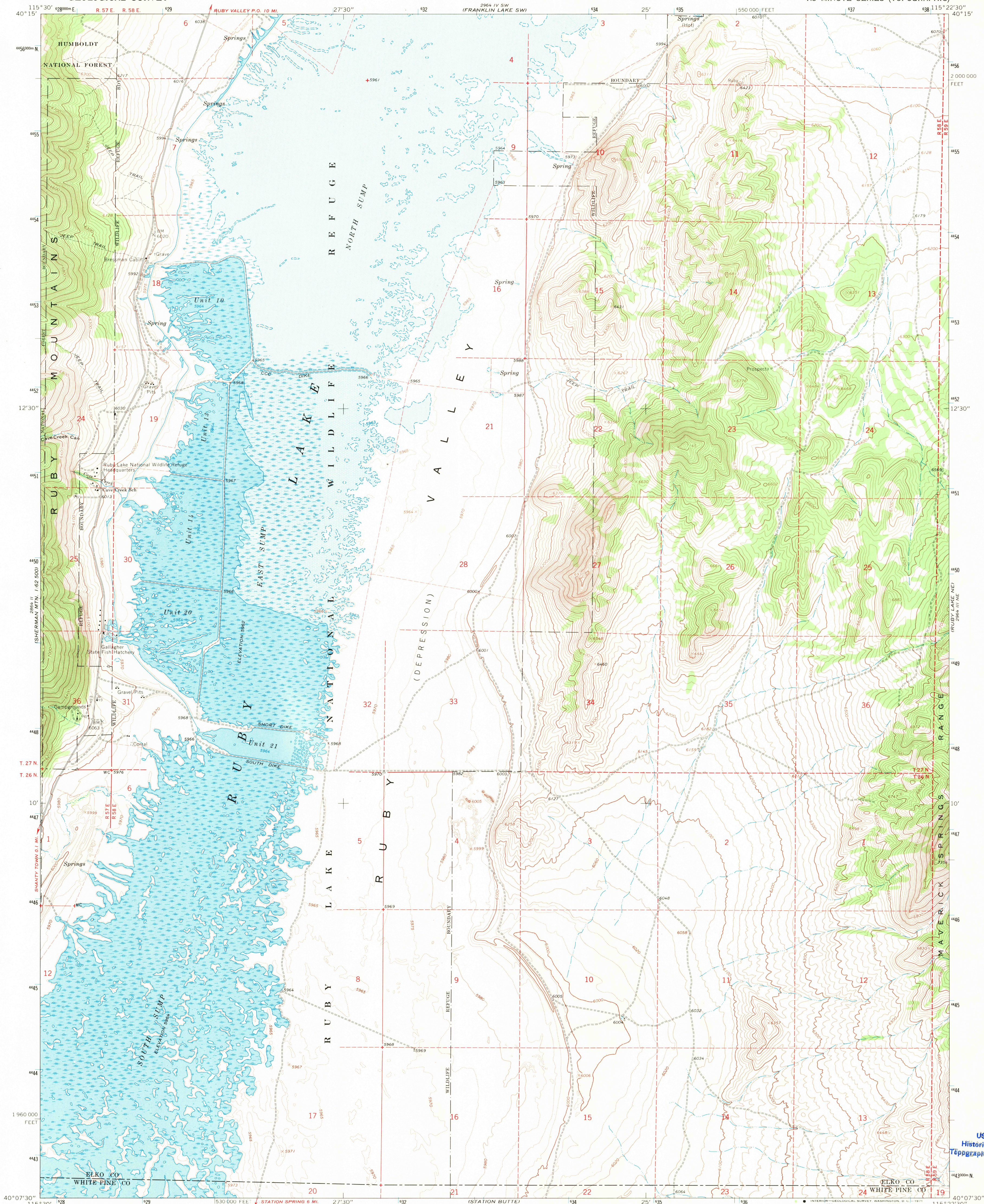


UNITED STATES
DEPARTMENT OF THE INTERIOR
GEOLOGICAL SURVEY

RUBY LAKE NW QUADRANGLE
NEVADA
7.5 MINUTE SERIES (TOPOGRAPHIC)

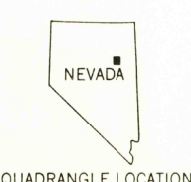
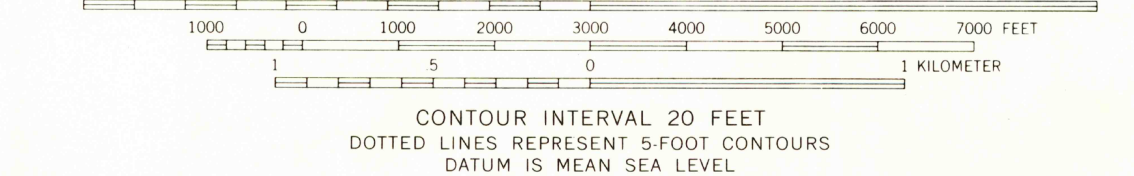
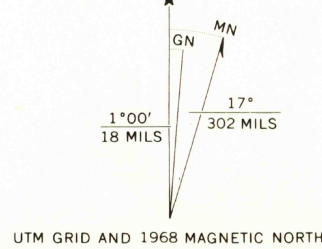


Mapped, edited, and published by the Geological Survey
Control by USGS and USC&GS

Topography by photogrammetric methods from aerial
photographs taken 1965. Field checked 1968
Polyconic projection: 1927 North American datum
10,000-foot grid based on Nevada coordinate system, east zone
1000-meter Universal Transverse Mercator grid ticks,
zone 11, shown in blue

Fine red dashed lines indicate selected fence lines
Where omitted, land lines have not been established or
are not shown because of insufficient data

Areas covered by dashed light-blue pattern
are subject to controlled inundation



ROAD CLASSIFICATION
Light-duty road, all weather, improved surface
Unimproved road, fair or dry weather

RUBY LAKE NW, NEV
N4007.5-W11522.5/7.5

1968
AMS-2964 III NW-SERIES V896

U.S.G.S.
FILE COPY
TOPOGRAPHIC DIVISION
2335
AUG 9 1971
HISTORICAL