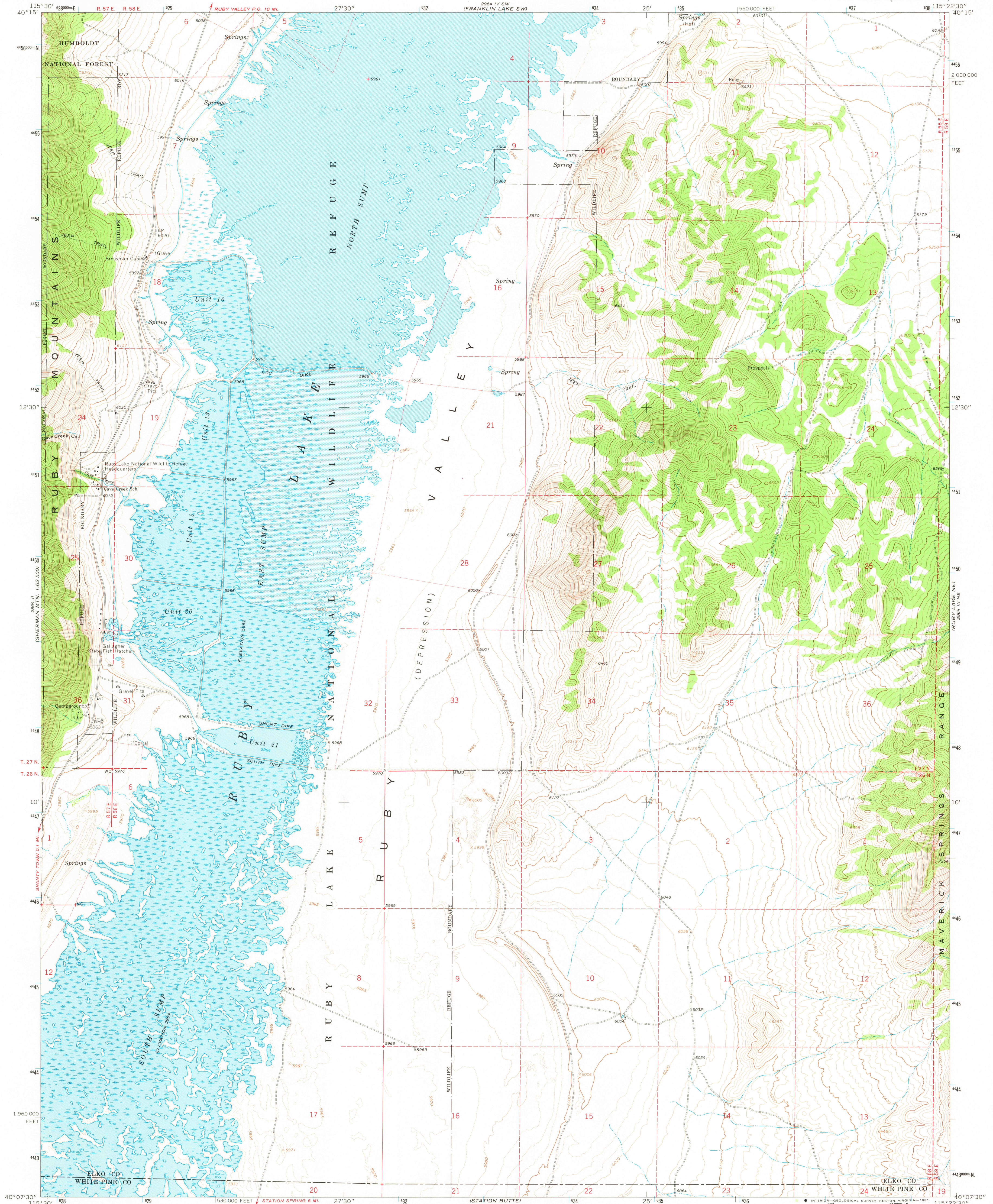
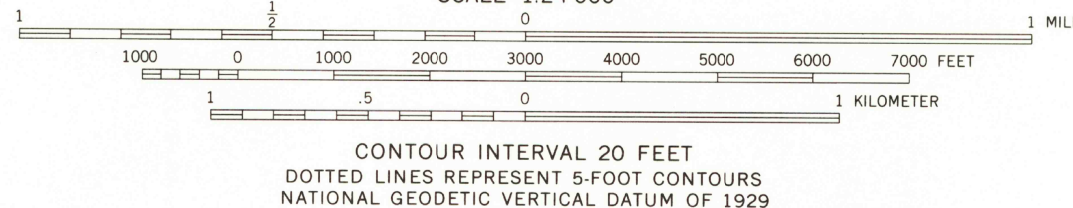
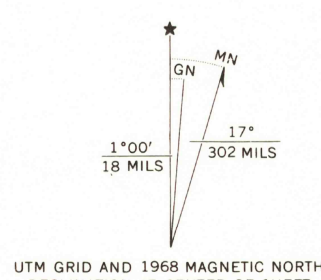


UNITED STATES
DEPARTMENT OF THE INTERIOR
GEOLOGICAL SURVEY

RUBY LAKE NW QUADRANGLE
NEVADA
7.5 MINUTE SERIES (TOPOGRAPHIC)



Mapped, edited, and published by the Geological Survey
Control by USGS and USC&GS
Topography by photogrammetric methods from aerial
photographs taken 1965. Field checked 1968
Polyconic projection. 1927 North American datum
10,000-foot grid based on Nevada coordinate system, east zone
1000-meter Universal Transverse Mercator grid ticks,
zone 11, shown in blue
To place on the predicted North American Datum 1983,
move the projection lines 11 meters north and
75 meters east as shown by dashed corner ticks
Fine red dashed lines indicate selected fence lines
Where omitted, land lines have not been established
or are not shown because of insufficient data
Areas covered by dashed light-blue pattern
are subject to controlled inundation



ROAD CLASSIFICATION
Light-duty road, all weather, Improved surface
Unimproved road, fair or dry weather

RUBY LAKE NW, NEV.
N4007.5-W11522.5/7.5
1968
DMA 2964 III NW-SERIES V896

OCT 26 1981