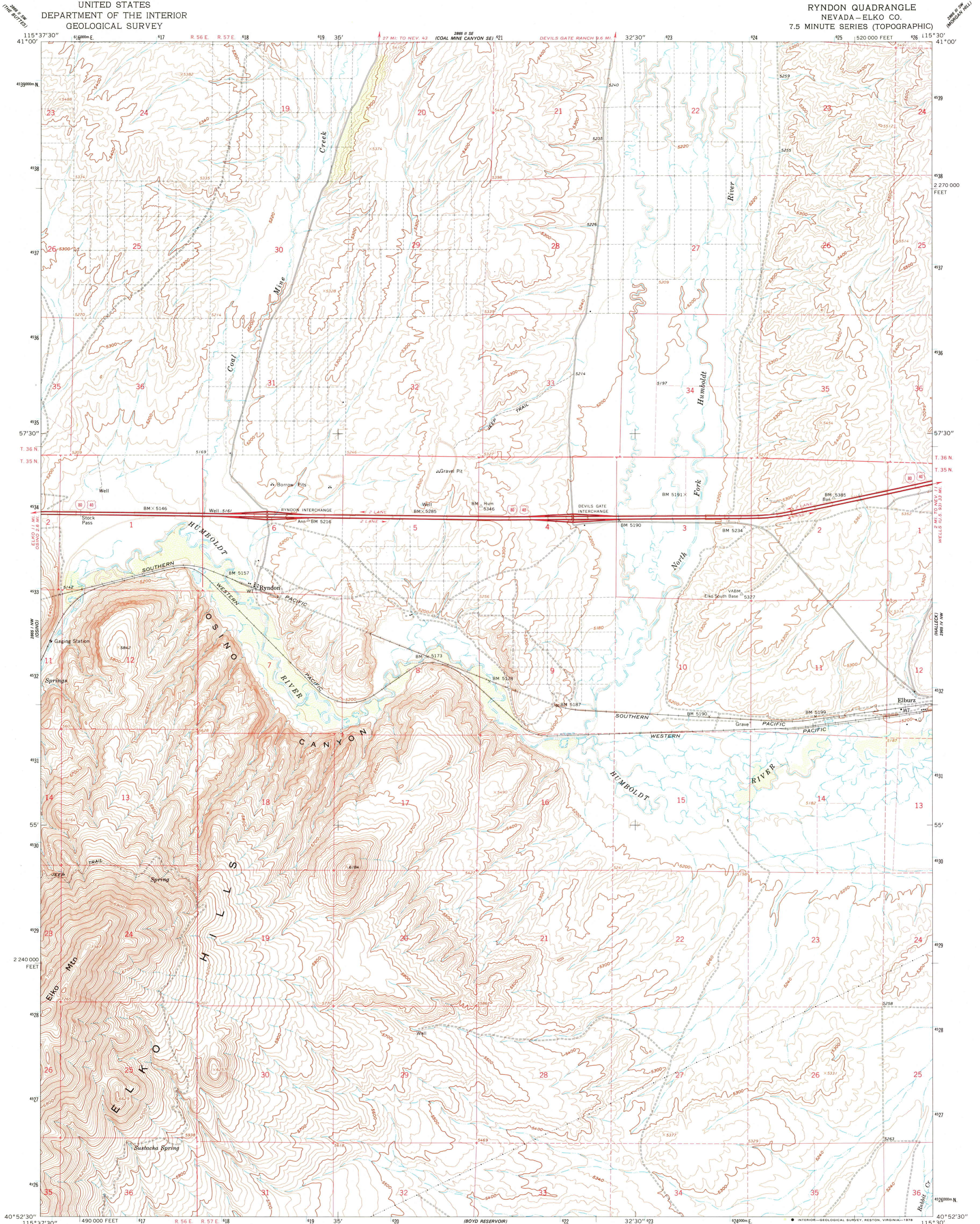


UNITED STATES  
DEPARTMENT OF THE INTERIOR  
GEOLOGICAL SURVEY

RYNDON QUADRANGLE  
NEVADA—ELKO CO.  
7.5 MINUTE SERIES (TOPOGRAPHIC)



Mapped, edited, and published by the Geological Survey

Control by USGS, USC&GS, and State of Nevada

Topography by photogrammetric methods from aerial photographs taken 1958. Field checked 1962

Polyconic projection. 1927 North American datum

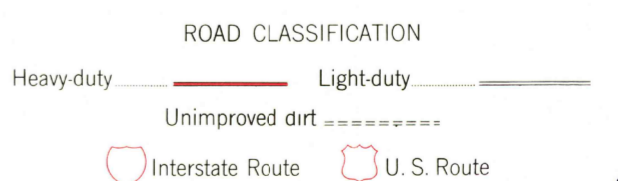
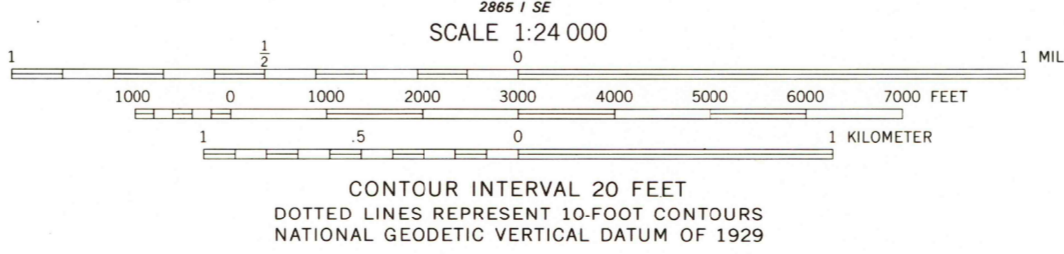
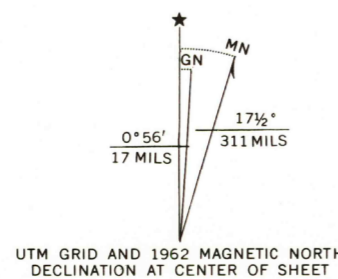
10,000-foot grid based on Nevada coordinate system, east zone

1000-meter Universal Transverse Mercator grid ticks, zone 11, shown in blue

Fine red dashed lines indicate selected fence lines

Map photoinspected 1975

No major culture or drainage changes observed



USGS  
Historical File  
Topographic Division  
RYNDON, NEV.  
N4052.5—W11530.75

JUL 13 1978

2750

THIS MAP COMPLIES WITH NATIONAL MAP ACCURACY STANDARDS  
FOR SALE BY U.S. GEOLOGICAL SURVEY, DENVER, COLORADO 80225, OR RESTON, VIRGINIA 22092  
A FOLDER DESCRIBING TOPOGRAPHIC MAPS AND SYMBOLS IS AVAILABLE ON REQUEST

1962  
PHOTOINSPECTED 1975  
AMS 2865 I NE—SERIES V896